


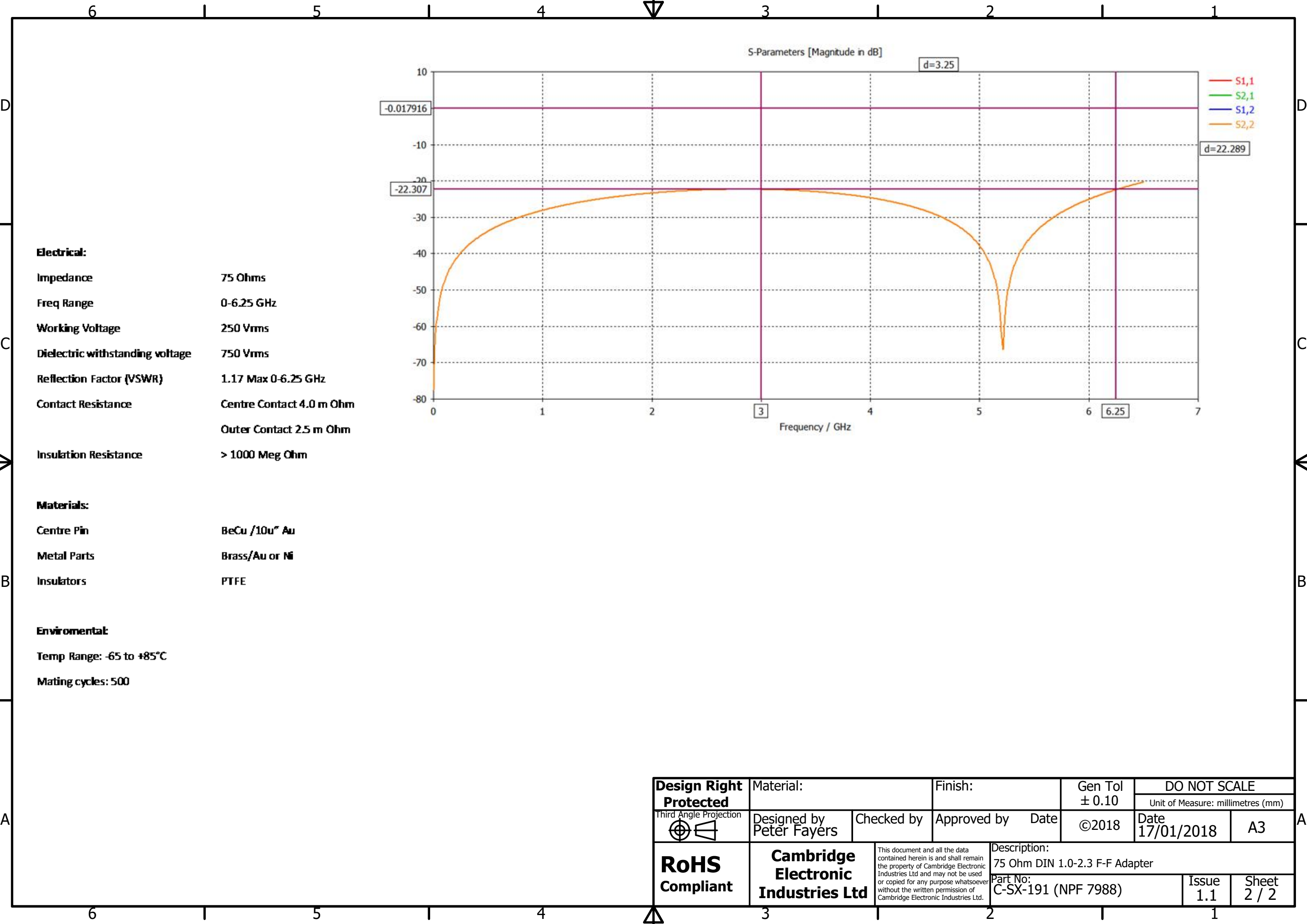
Note:

Supplied with circular nut.
Application tool:TLG 108.

Panel Cut Out
Max Thickness 4.0mm

REVISION HISTORY				
REV	DESCRIPTION	CHG REF	DATE	DESIGNER
1.0	Origin	NPF 7988	17/01/2018	Peter Fayers
1.1	Length Chg	Int Review	22/01/2018	Peter Fayers

Design Right Protected Third Angle Projection 	Material:		Finish:		Gen Tol ± 0.10		DO NOT SCALE	
	Designed by Peter Fayers		Checked by	Approved by	Date	©2018	Date 17/01/2018	A3
RoHS Compliant	Cambridge Electronic Industries Ltd	This document and all the data contained herein is and shall remain the property of Cambridge Electronic Industries Ltd and may not be used or copied for any purpose whatsoever without the written permission of Cambridge Electronic Industries Ltd.	Description: 75 Ohm DIN 1.0-2.3 F-F Adapter					
			Part No: C-SX-191 (NPF 7988)				Issue 1.1	Sheet 1 / 2



Electrical:

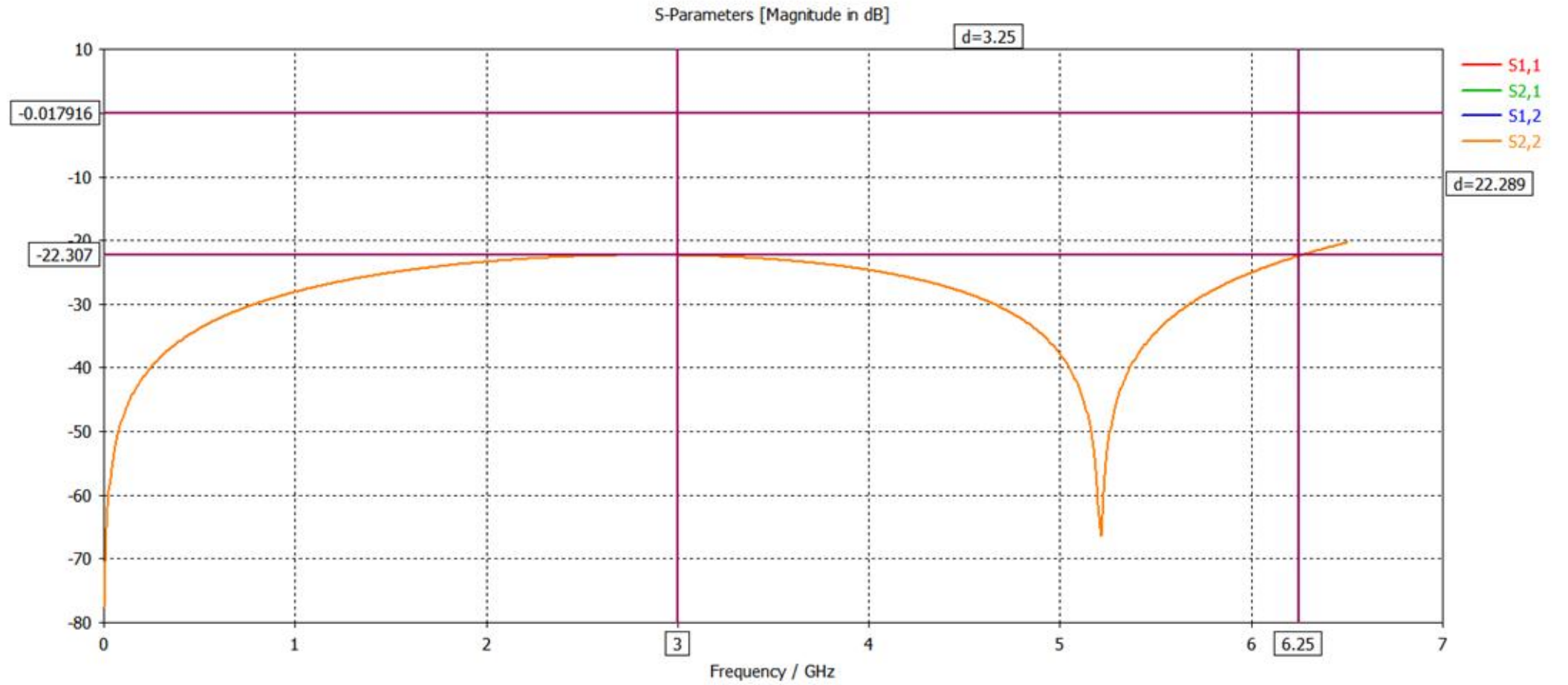
Impedance 75 Ohms
Freq Range 0-6.25 GHz
Working Voltage 250 Vrms
Dielectric withstanding voltage 750 Vrms
Reflection Factor (VSWR) 1.17 Max 0-6.25 GHz
Contact Resistance
Centre Contact 4.0 m Ohm
Outer Contact 2.5 m Ohm
Insulation Resistance > 1000 Meg Ohm

Materials:

Centre Pin BeCu /10u" Au
Metal Parts Brass/Au or Ni
Insulators PTFE

Enviromental:

Temp Range: -65 to +85°C
Mating cycles: 500



Design Right Protected Third Angle Projection	Material:		Finish:		Gen Tol ± 0.10	DO NOT SCALE	
	Designed by Peter Fayers		Checked by	Approved by	Date	©2018	Unit of Measure: millimetres (mm)
RoHS Compliant	Cambridge Electronic Industries Ltd		This document and all the data contained herein is and shall remain the property of Cambridge Electronic Industries Ltd and may not be used or copied for any purpose whatsoever without the written permission of Cambridge Electronic Industries Ltd.		Description: 75 Ohm DIN 1.0-2.3 F-F Adapter		
			Part No: C-SX-191 (NPF 7988)		Issue 1.1		Sheet 2 / 2