

3GHz BNC Coaxial Connectors

Square Based Top Entry BNC Connector

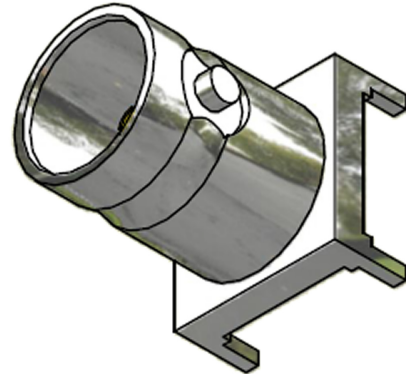
Part Number C-SX-089

General Description

The C-SX-089 is a square based, top entry, mounting BNC connector, which meets the SMPTE 424M standard, allowing bit-rates of 2.970Gbit/s over a single coaxial connection. This connector is ideal for use in industrial process control and data acquisition applications.

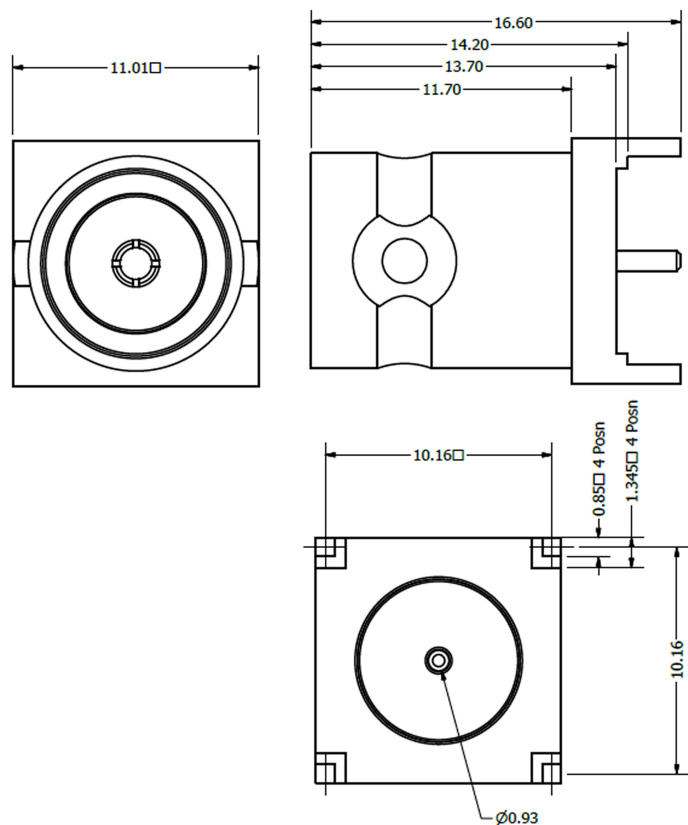
Electrical Specification

Impedance:	75 Ω
Frequency Range:	0-3GHz
Working Voltage:	500Vrms
Dielectric Withstanding Voltage:	1500Vrms
Reflection Factor ^(VSWR) :	1.08 ^(max) DC - 1.5GHz 1.16 ^(max) 1.5 - 3.0GHz
Contact Resistance:	Centre contact 1.5m Ω Outer contact 1.0m Ω
Insulation Resistance:	>5000M Ω
Connector Type:	Female
Materials	
Centre Pin:	Phosphor Bronze / 10 μ "Au
Metal Parts:	Brass / Ni
Insulators:	PTFE
Environmental	
Temp Range:	-65 to +85°C
Mating Cycles:	500
Processing	
Maximum wave and hand soldering temperature 265°C	



Features

- Square Based Top Entry BNC Connector
- Meets SMPTE 424M Standard



3G SDI

CoaxVision™