

3GHz BNC Coaxial Connectors

Top Entry BNC Connector

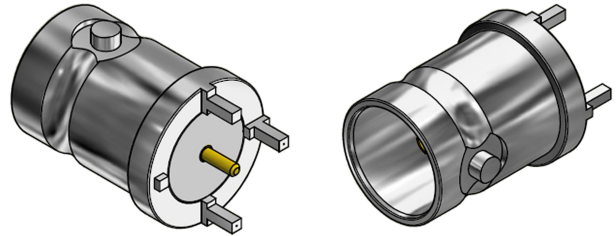
Part Number C-SX-118

General Description

The C-SX-118 is a round based, top entry, mounting BNC connector, which meets the SMPTE 424M standard, allowing bit-rates of 2.970Gbit/s over a single coaxial connection. This connector is ideal for use in industrial process control and data acquisition and is compliant with Picture in Picture applications.

Electrical Specification

Impedance:	75Ω
Frequency Range:	0-3GHz
Working Voltage:	500Vrms
Dielectric Withstanding Voltage:	1500Vrms
Reflection Factor ^(VSWR) :	1.02 ^(max) DC - 1.5GHz 1.10 ^(max) 1.5 - 3.0GHz
Contact Resistance:	Centre contact 1.5mΩ Outer contact 1.0mΩ
Insulation Resistance:	>5000M Ω
Connector Type:	Female
Materials	
Centre Pin:	Phosphor Bronze / 10 μAu
Metal Parts:	Brass / Ni
Insulators:	PTFE
Environmental	
Temp Range:	-65 to +85°C
Mating Cycles:	250
Processing	
Maximum wave and hand soldering temperature	265°C



Features

- Compliant with Picture in Picture applications
- Meets SMPTE 424M Standard

