

3GHz DIN 1.0 / 2.3 Coaxial Connectors

PCB Right Angle Bulkhead Connector with Tape & Reel Placement

Part Number C-SX-121

General Description

The C-SX-121 precision 75Ω DIN 1.0/2.3 Connector is right angled mounted PCB bulkhead connector. This range of connectors meets the SMPTE 424M standard and is ideal for use in industrial process control and data acquisition applications. The connector is mounted in a tape carrier with 400 connectors per reel.

Electrical Specification

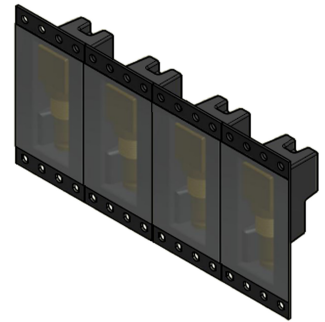
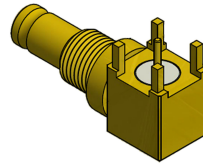
| | |
|----------------------------------|---|
| Impedance: | 75Ω |
| Frequency Range: | 0-3GHz |
| Working Voltage: | 250Vrms |
| Dielectric Withstanding Voltage: | 750Vrms |
| Reflection Factor (V_{SWR}): | $1.10^{(max)}$ DC - 1.5GHz $1.12^{(max)}$ 1.5 - 3GHz |
| Contact Resistance: | Centre contact 4.0mΩ Outer contact 2.5mΩ |
| Insulation Resistance: | >1000M Ω |
| Connector Type: | Female |
| Materials | |
| Centre Pin: | BeCu / 10 μ"Au |
| Metal Parts: | Brass / Au |
| Insulators: | PTFE |

Environmental

| | |
|---------------|--------------|
| Temp Range: | -65 to +85°C |
| Mating Cycles | 500 |

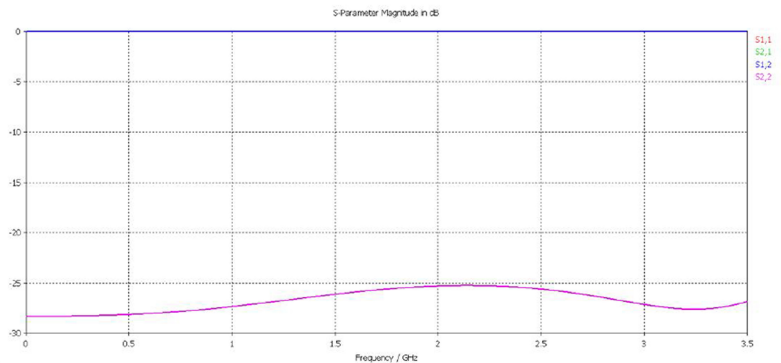
Processing

Maximum wave and hand soldering temperature 265°C



Features

- Meets SMPTE 424M Standard
- 8mm pitch enables high wiring densities
- PCB edge mounting style minimises signal path discontinuities.



3G SDI

CoaxVision™

