

6GHz DIN 1.0 / 2.3 Coaxial Connectors

PCB Edge Mounted Connector

Part Number C-SX-127N (for 1.6mm PCB thickness)

General Description

The C-SX-127N is a low profile PCB edge mounted connector which conforms to the standard of SMPTE ST 2081-1, allowing bit-rates of 5.94bit/s over a single coaxial connection. The 8mm pitch of the connector enables double wiring densities and is optimised for use in 6G HD-SDI applications.

Electrical Specification

| | |
|----------------------------------|---|
| Impedance: | 75Ω |
| Frequency Range: | 0-6GHz |
| Working Voltage: | 250Vrms |
| Dielectric Withstanding Voltage: | 750Vrms |
| Reflection Factor (V_{SWR}): | 1.10 ^(max) DC - 3GHz 1.32 ^(max) 3 - 6GHz |
| Contact Resistance: | Centre contact 4.0mΩ Outer contact 2.5mΩ |
| Insulation Resistance: | >1000M Ω |
| Connector Type: | Female |

Materials

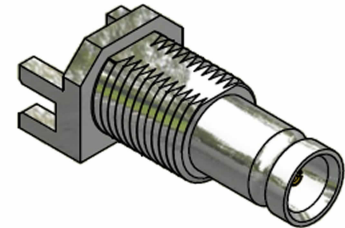
| | |
|--------------|-----------------|
| Centre Pin: | BeCu / 10 μ" Au |
| Metal Parts: | Brass / Ni |
| Insulators: | PTFE |

Environmental

| | |
|----------------|--|
| Temp Range: | -65 to +85°C |
| Mating Cycles: | 500 |
| Vibration: | MIL-STD-202 Method 204 test conditions B |
| Salt Spray: | MIL-STD-202 Method 101 test conditions B |

Processing

Maximum hand soldering temperature 265°C



Features

- Meets SMPTE ST 2081-1 Standard
- Optimised for 6G HD-SDI applications
- 8mm pitch can double wiring densities
- Secure latching system compatible with standard 1.0/2.3 connectors

