

6GHz BNC Coaxial Connectors

PCB Edge Mounting BNC Connector

Part Number C-SX-131

General Description

The C-SX-131 is a PCB edge mounted BNC Connector which meets the SMPTE 424M standard, allowing bit-rates of 2.970Gbit/s over a single coaxial connection. The PCB edge mounting style minimises signal path discontinuities while the location webs ensure an accurate position is obtained in PCB production.

Electrical Specification

Impedance:	75Ω
Frequency Range:	0-6GHz
Working Voltage:	500Vrms
Dielectric Withstanding Voltage:	1500Vrms
Reflection Factor (VSWR):	1.09 ^(max) DC - 3GHz 1.29 ^(max) 3 - 6GHz
Contact Resistance:	Centre contact 1.5mΩ Outer contact 1.0mΩ
Insulation Resistance:	>5000M Ω
Connector Type:	Female

Materials

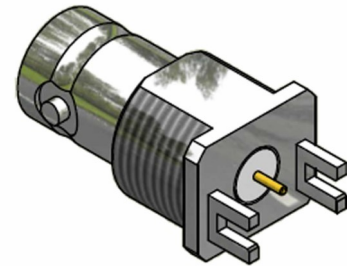
Centre Pin:	Phosphor Bronze / 10 μ"Au
Metal Parts:	Brass / Ni
Insulators:	PTFE

Environmental

Temp Range:	-65 to +85°C
Mating Cycles:	250
Vibration:	MIL-STD-202 Method 204 Test condition B
Salt Spray:	MIL-STD-202 Method 101 Test Condition B

Processing

Maximum wave and hand soldering temperature 265°C



6G SDI

CoaxVision™

Features

- Optimised for 6G HD-SDI environments
- Meets SMPTE 424M Standard
- PCB edge mounting style minimises signal path discontinuities
- Unique location webs accurately position the connector on the PCB during production

