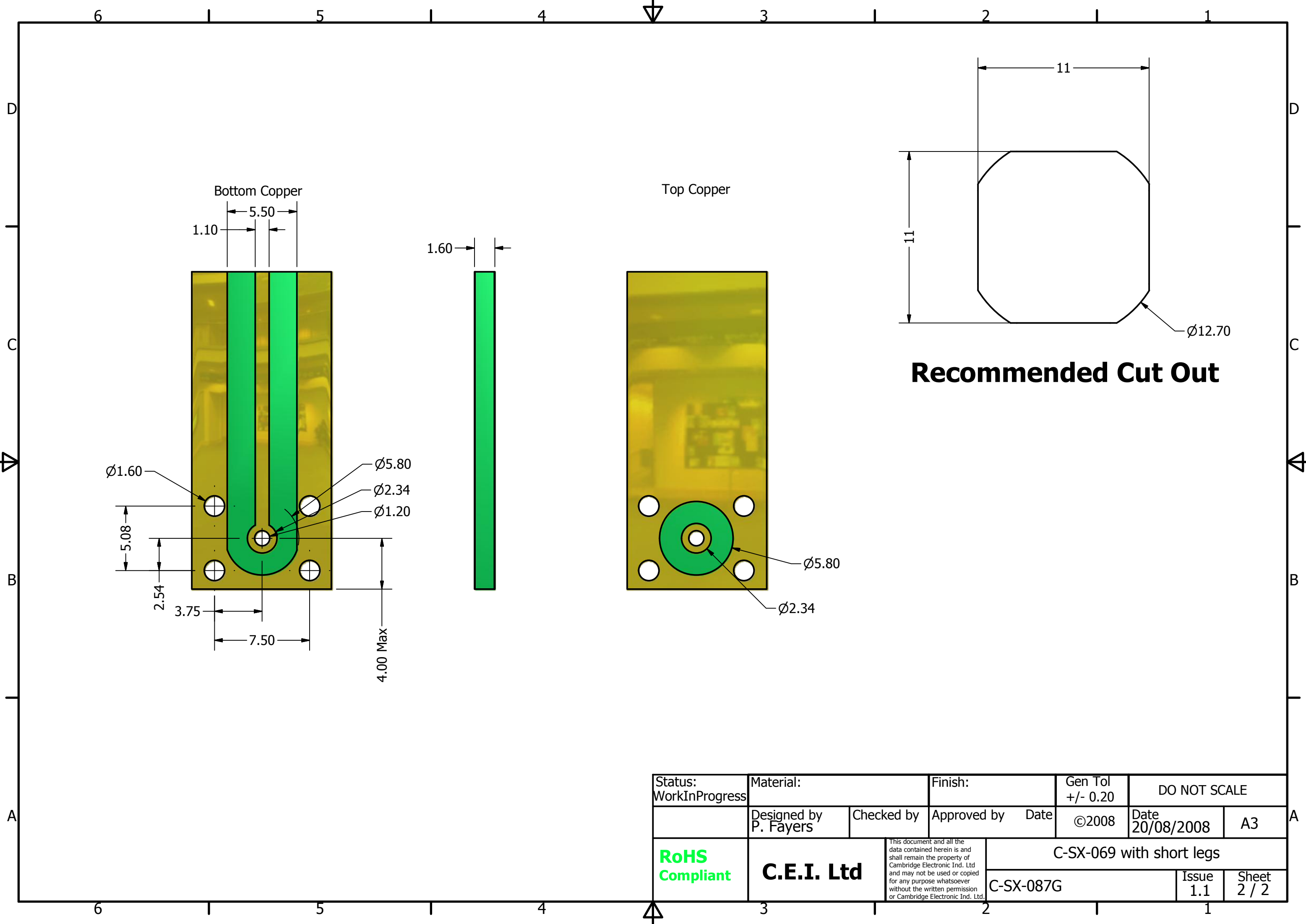


**Note: Not Supplied with  
Hex Nut and  
Shakeproof washer  
as standard.**

REVISION HISTORY			
REV	DESCRIPTION	DATE	DESIGNER
1.0	Origin	03/09/2008	P. Fayers
1.1	Body Au Plated and no Nut/Washers	02/04/2009	P. Fayers

Status: WorkInProgress	Material:		Finish: Au Plated	Gen Tol +/- 0.20	DO NOT SCALE	
	Designed by P. Fayers	Checked by	Approved by	Date	©2008	A3
RoHS Compliant	C.E.I. Ltd		C-SX-069 with short legs			
			C-SX-087G		Issue 1.1	Sheet 1 / 2



Bottom Copper

Top Copper

### Recommended Cut Out

Ø1.60  
5.08  
2.54  
3.75  
7.50  
4.00 Max  
Ø5.80  
Ø2.34  
Ø1.20

Ø5.80  
Ø2.34

Ø12.70

Status: WorkInProgress	Material:		Finish:	Gen Tol +/- 0.20	DO NOT SCALE	
	Designed by P. Fayers	Checked by	Approved by	Date	©2008	Date 20/08/2008
RoHS Compliant	C.E.I. Ltd		This document and all the data contained herein is and shall remain the property of Cambridge Electronic Ind. Ltd and may not be used or copied for any purpose whatsoever without the written permission of Cambridge Electronic Ind. Ltd.		C-SX-069 with short legs	
					C-SX-087G	Issue 1.1
						Sheet 2 / 2