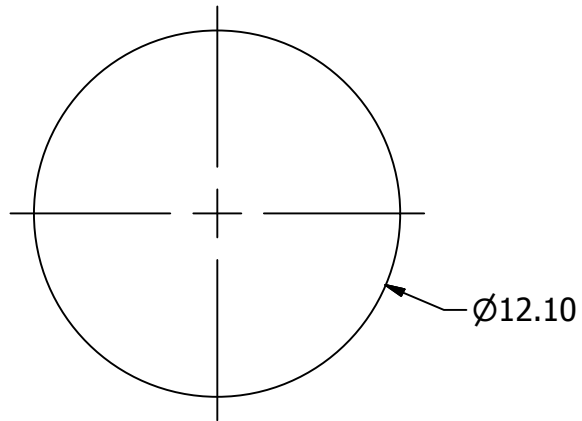
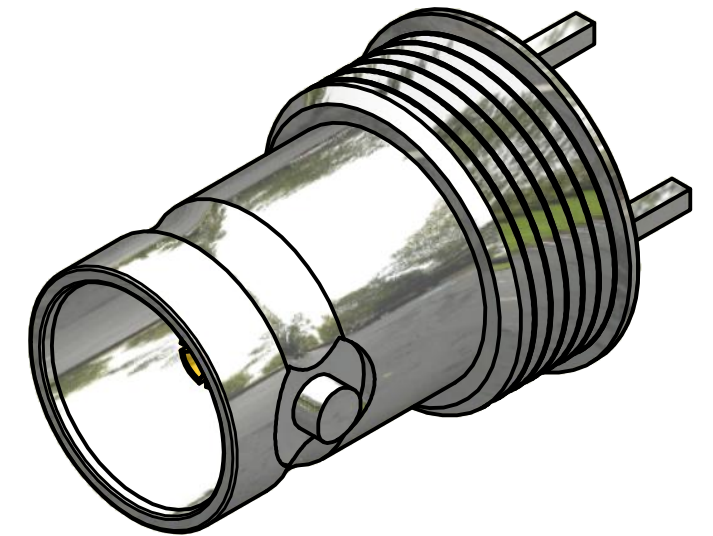
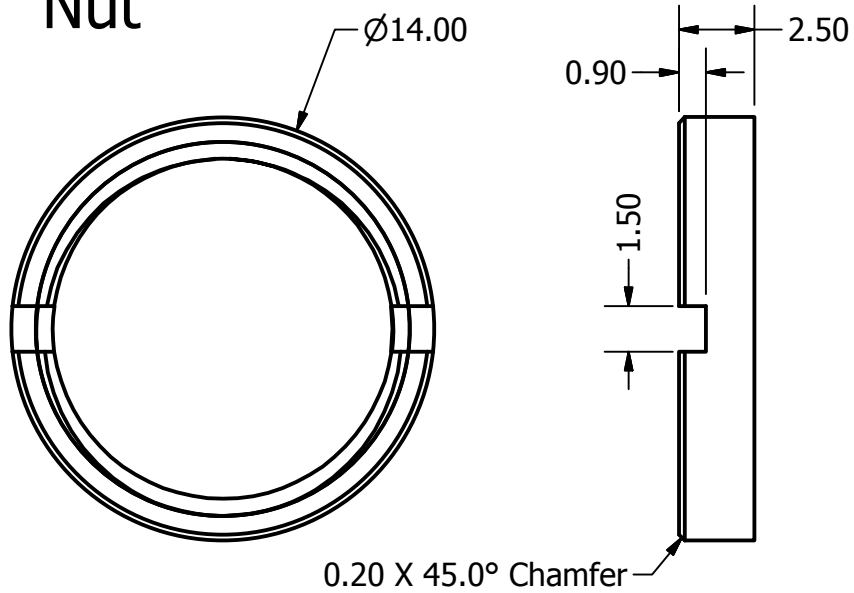


Cut Out



Nut



REVISION HISTORY			
REV	DESCRIPTION	DATE	APPROVED
1.0	Origin	28/02/2012	P. Fayers
1.1	Thread changed to M12x0.75	06/03/2012	P.Fayers
1.2	Back Flange to 0.45mm	06/03/2012	P. Fayers
1.3	Part No Issued	30/03/2012	P. Fayers

Status: WorkInProgress	Material: Brass/PTFE/PhosBronz	Finish: NI/ /Au	X.X - +-0.1 X.XX - +-0.05 X.XXX- +-0.02	DO NOT SCALE	
	Designed by Peter Fayers	Checked by	Approved by	Date	©2012
				28/02/2012	A3
C.E.I. Ltd				This document and all the data contained herein is and shall remain the property of Cambridge Electronic Ind. Ltd and may not be used or copied for any purpose whatsoever without the written permission or Cambridge Electronic Ind. Ltd.	
3 Leg Bulkhead BNC 75 Ohm				Issue 1.3	Sheet 1 / 2
C-SX-111 Cust					

Electrical:

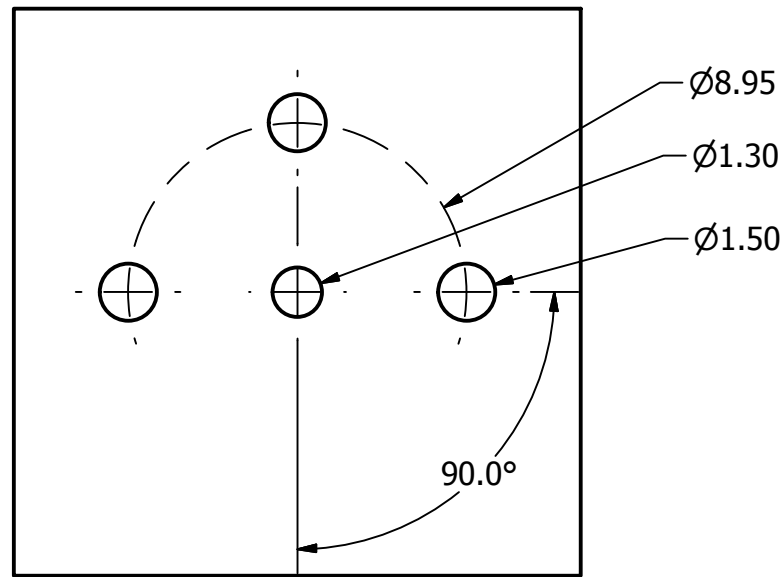
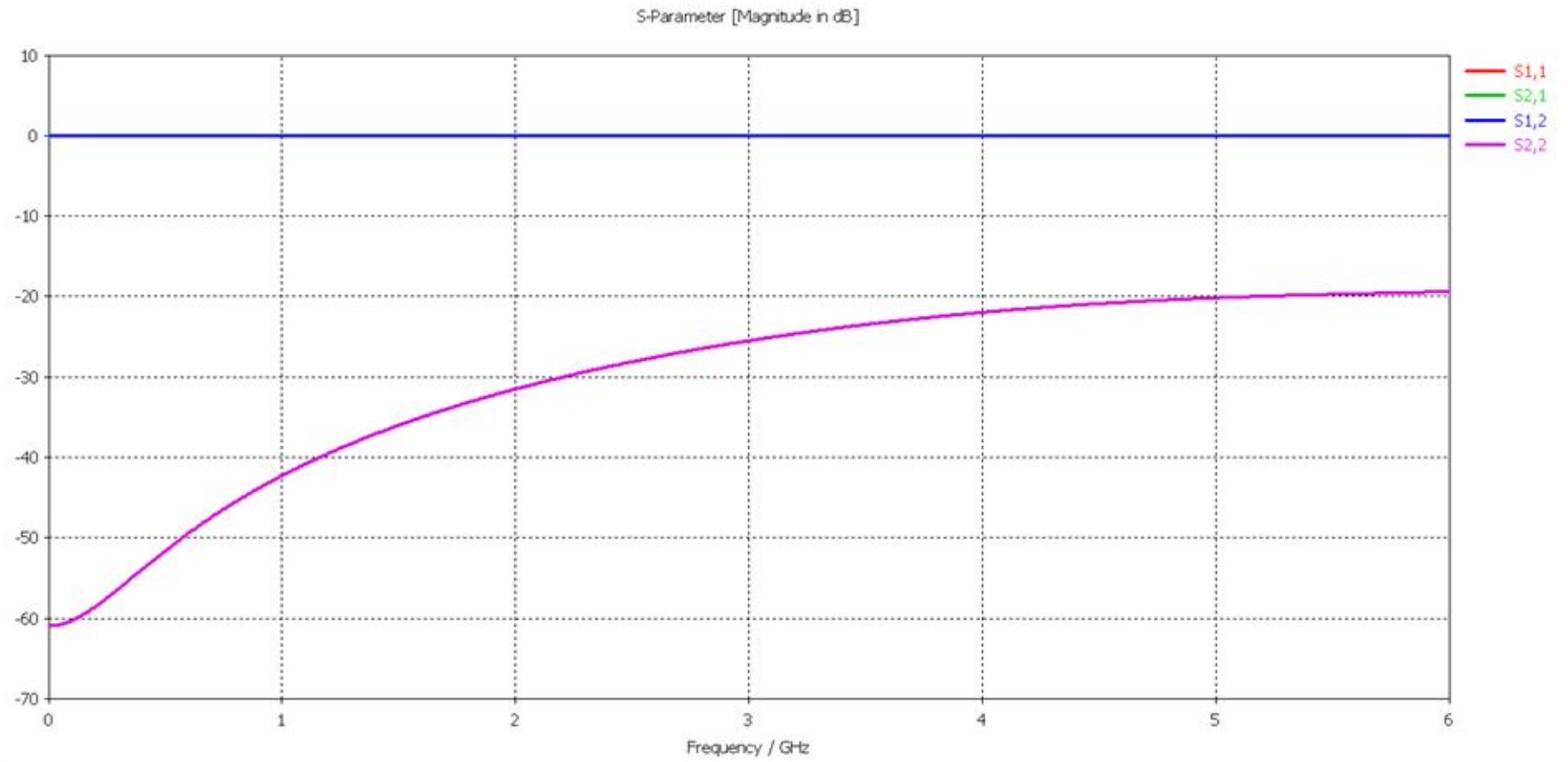
Impedance 75 Ohms
 Freq Range 0-6.0GHz
 Working Voltage 500 Vrms
 Dielectric withstanding voltage 1500 Vrms
 Reflection Factor (VSWR)
 1.03 Max DC-1.5GHz
 1.12 Max 1.5GHz-3.0GHz
 1.24 Max 3.0GHz-6.0GHz
 Contact Resistance
 Centre Contact 1.5 m Ohm
 Outer Contact 1.0 m Ohm
 Insulation Resistance > 5000 Meg Ohm

Materials:

Centre Pin Phosphor Bronze /10u" Au
 Metal Parts Brass/Ni
 Insulators PTFE

Environmental:

Temp Range: -65 to +85°C
 Mating cycles: 250
 Vibration: MIL-STD-202 Method 204 test condition B
 Salt Spray: MIL-STD-202 Method 101 test condition B



PCB Footprint

Status: WorkInProgress	Material:	Finish:	X.X - +-0.1 X.XX - +-0.05 X.XXX - +-0.02	DO NOT SCALE	
	Designed by Peter Fayers	Checked by	Approved by	Date ©2012	Date 28/02/2012
					A3
	C.E.I. Ltd		This document and all the data contained herein is and shall remain the property of Cambridge Electronic Ind. Ltd and may not be used or copied for any purpose whatsoever without the written permission of Cambridge Electronic Ind. Ltd.		
			3 Leg Bulkhead BNC 75 Ohm		
			C-SX-111 Cust	Issue 1.3	Sheet 2 / 2