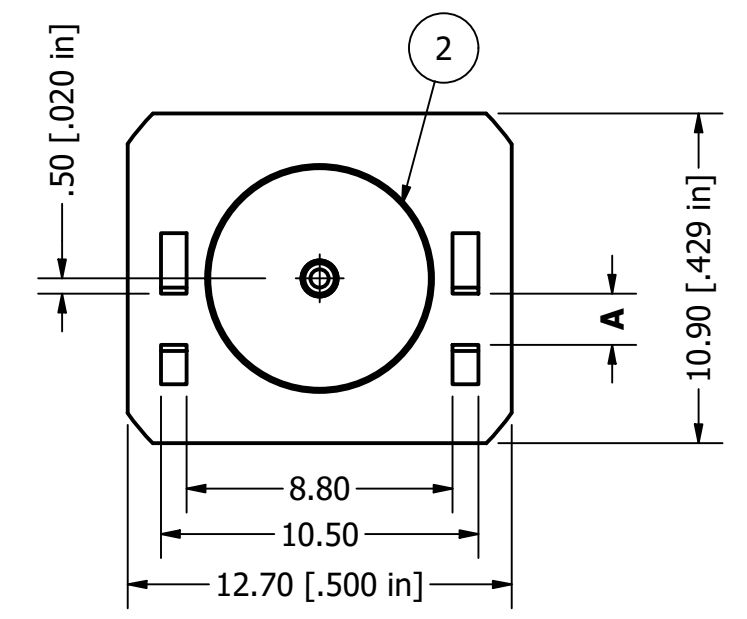
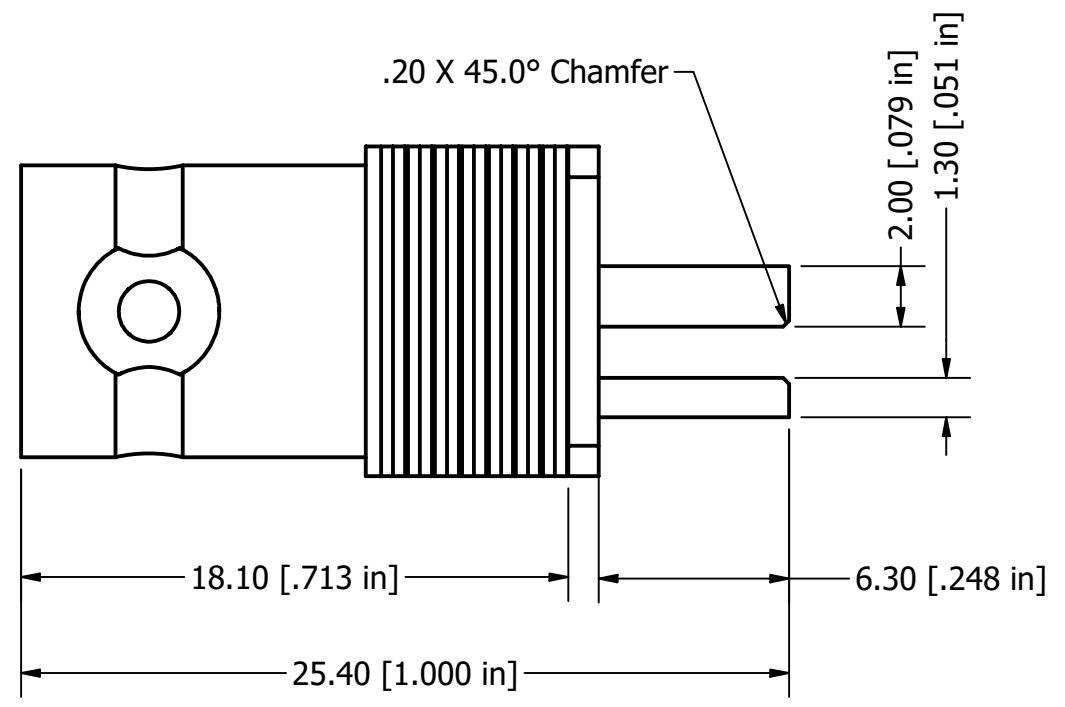
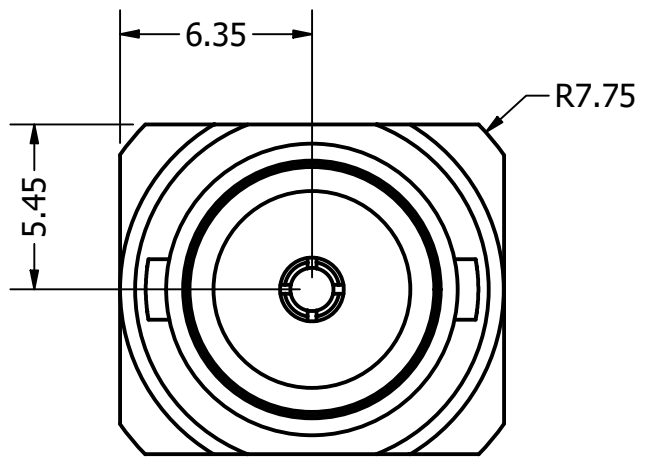
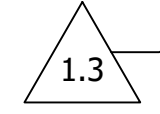


Dim A		
Part No	Dim	PCB Thk
C-SX-141	1.7	1.6

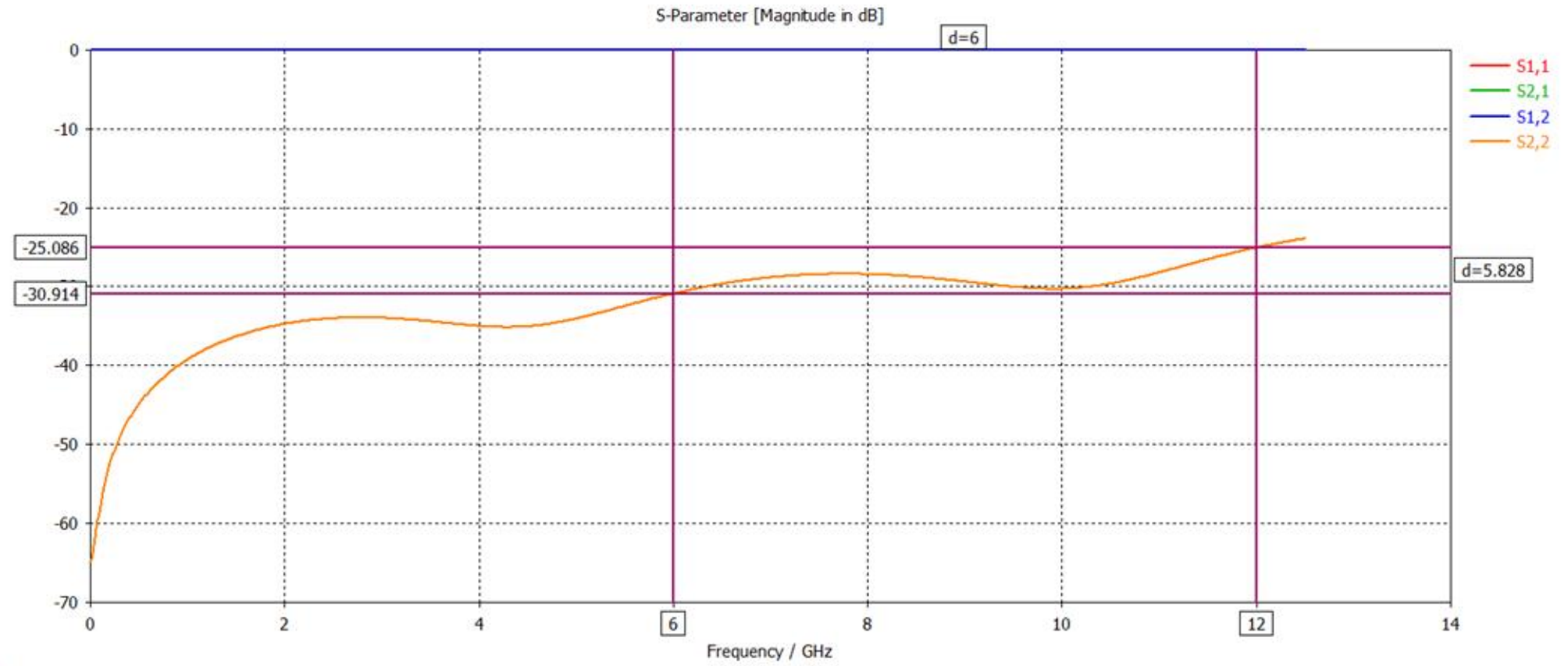


Note: 1. Nut & Washer supplied with Connector.

REVISION HISTORY			
REV	DESCRIPTION	DATE	DESIGNER
1.0	Origin	17/12/2013	P. Fayers
1.1	RL Data Corrected	03/03/2015	Peter Fayers
1.2	PCB defined further	17/07/2015	Peter Fayers
1.3	Dim Added to table	14-Mar-17	Peter Fayers
1.4	Electrical data revised	22/12/2020	Peter Fayers

PARTS LIST			
ITEM	QTY	DESCRIPTION	MATERIAL
1	1	12GHz BNC Body	Ni Plate
2	1	12GHz BNC Insulator	Nat
3	1	12GHz BNC Contact	10u Au Plate

Design Right Protected Third Angle Projection 	Material:	Finish:	Gen Tol +/- 0.20	DO NOT SCALE	
	Designed by Peter Fayers	Checked by	Approved by	Date	©2013
RoHS Compliant	Cambridge Electronic Industries Ltd	This document and all the data contained herein is and shall remain the property of Cambridge Electronic Industries Ltd and may not be used or copied for any purpose whatsoever without the written permission of Cambridge Electronic Industries Ltd.		12 GHZ End Launch BNC Socket	
		C-SX-141		Issue 1.4	Sheet 1 / 2



Electrical:

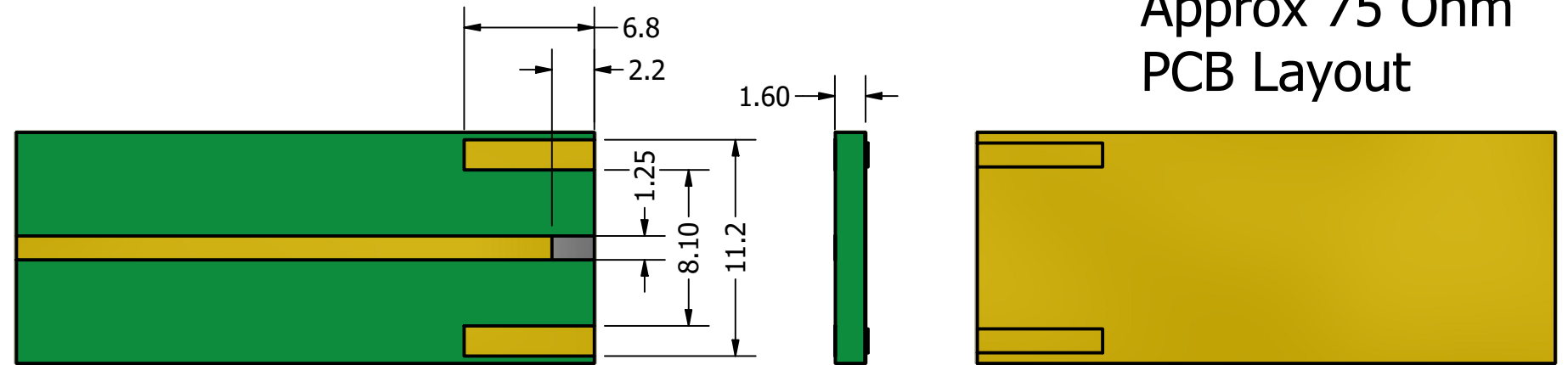
Impedance	75 Ohms
Freq Range	0-12.0GHz
Working Voltage	500 Vrms
Dielectric withstanding voltage	1500 Vrms
Reflection Factor (VSWR)	1.12 Max DC-12GHz
Contact Resistance	Centre Contact 1.5 m Ohm Outer Contact 1.0 m Ohm
Insulation Resistance	> 5000 Meg Ohm

Materials:

Centre Pin	Phos/Bronze /10u" Au
Metal Parts	Brass/Ni
Insulators	PTFE

Environmental:

Temp Range: -65 to +85°C
Mating cycles: 200



Design Right Protected	Material: FR4 1.6mm		Finish: 1oZ Cu		Gen Tol +/- 0.20		DO NOT SCALE	
	Third Angle Projection		Designed by Peter Fayers		Checked by		Approved by Date	
RoHS Compliant	Cambridge Electronic Industries Ltd		This document and all the data contained herein is and shall remain the property of Cambridge Electronic Industries Ltd and may not be used or copied for any purpose whatsoever without the written permission of Cambridge Electronic Industries Ltd.		©2013		Date 18/12/2013	
					12 GHZ End Launch BNC Socket		A3	
	C-SX-141		Issue 1.4		Sheet 2 / 2			