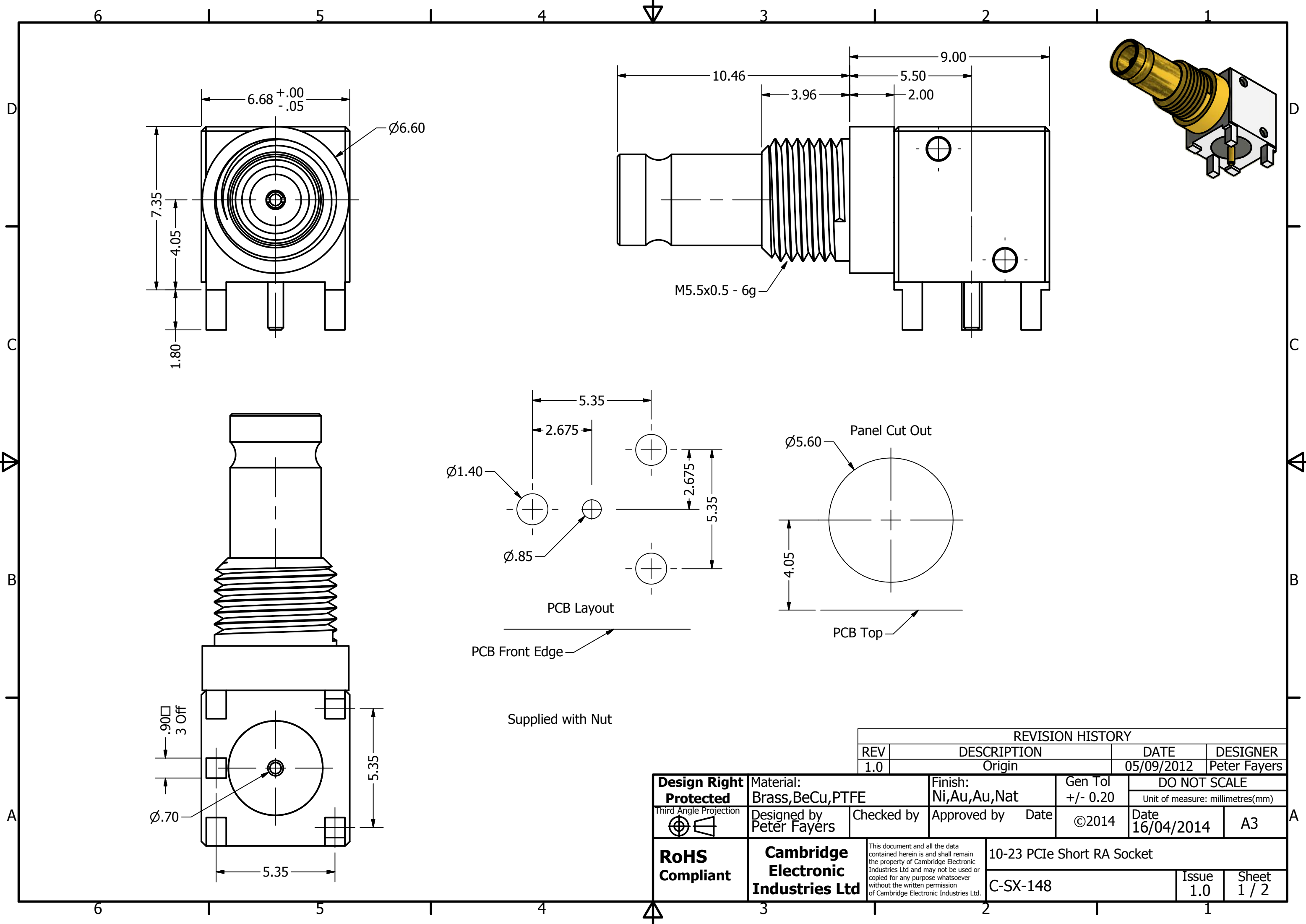
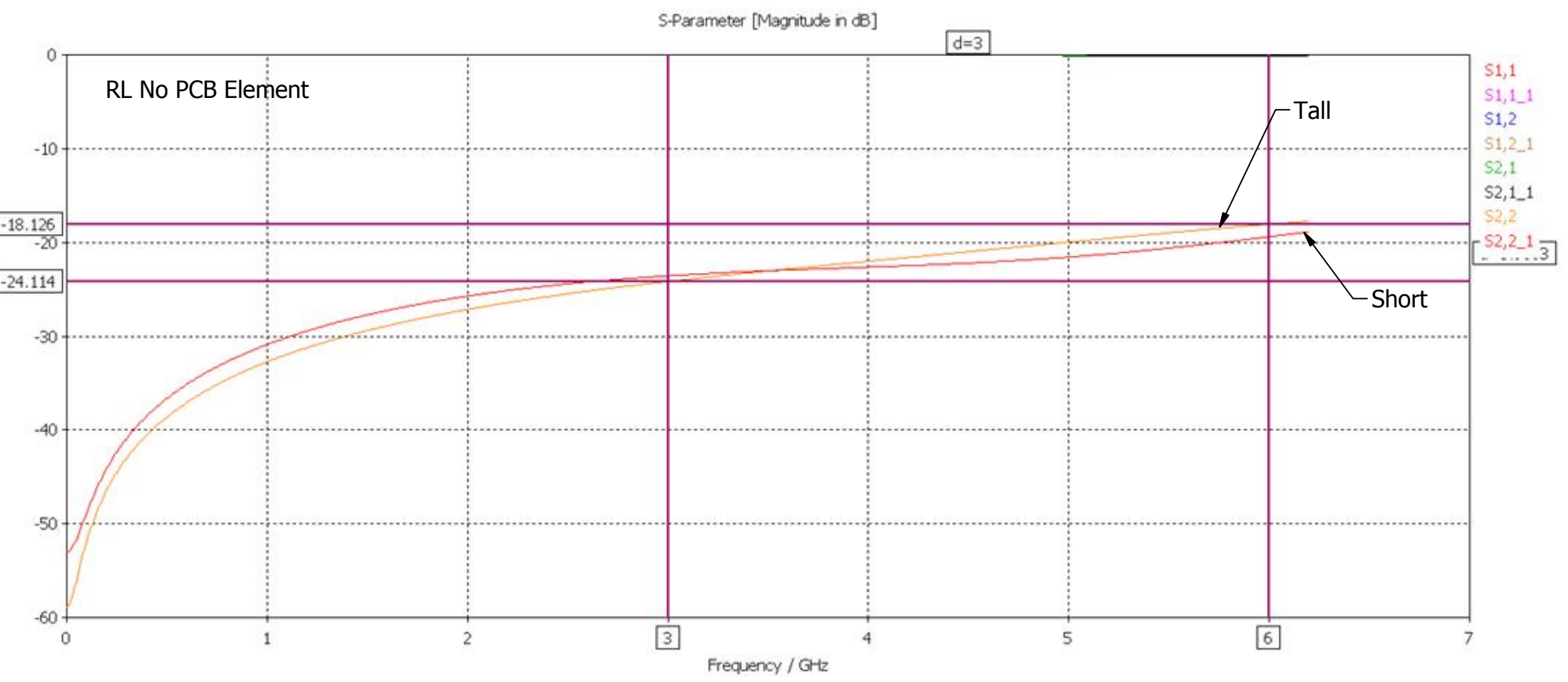


Supplied with Nut

REVISION HISTORY			
REV	DESCRIPTION	DATE	DESIGNER
1.0	Origin	05/09/2012	Peter Fayers

Design Right Protected <small>Third Angle Projection</small> 	Material: Brass, BeCu, PTFE	Finish: Ni, Au, Au, Nat	Gen Tol +/- 0.20	DO NOT SCALE	
	Designed by Peter Fayers	Checked by	Approved by	Date	©2014
RoHS Compliant	Cambridge Electronic Industries Ltd	<small>This document and all the data contained herein is and shall remain the property of Cambridge Electronic Industries Ltd and may not be used or copied for any purpose whatsoever without the written permission of Cambridge Electronic Industries Ltd.</small>		10-23 PCIe Short RA Socket	
				C-SX-148	Issue 1.0





Electrical:

Impedance	75 Ohms
Freq Range	0-6.0GHz
Working Voltage	250 Vrms
Dielectric withstanding voltage	750 Vrms
Reflection Factor (VSWR)	1.13 Max DC-3.0 GHz
	1.29 Max 3.0 GHz-6.0 GHz
Contact Resistance	Centre Contact 4.0 m Ohm
	Outer Contact 2.5 m Ohm
Insulation Resistance	> 1000 Meg Ohm

Materials:

Centre Pin	BeCu /10u" Au
Metal Parts	Brass/Au
Insulators	PTFE

Environmental:

Temp Range:	-65 to +85°C
Mating cycles:	500
Vibration:	MIL-STD-202 Method 204 test condition B
Salt Spray:	MIL-STD-202 Method 101 test condition B

Design Right Protected	Material:		Finish:		Gen Tol +/- 0.20	DO NOT SCALE	
	Third Angle Projection		Designed by Peter Fayers		Checked by	Approved by	Date
RoHS Compliant	Cambridge Electronic Industries Ltd		This document and all the data contained herein is and shall remain the property of Cambridge Electronic Industries Ltd and may not be used or copied for any purpose whatsoever without the written permission of Cambridge Electronic Industries Ltd.		10-23 PCIe Short RA Socket		©2014
			C-SX-148		Issue 1.0	Sheet 2 / 2	Date 16/04/2014 A3