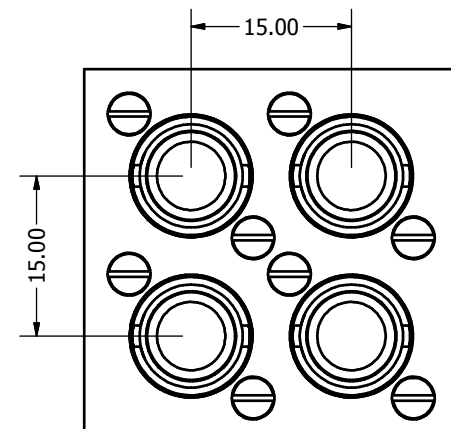


Panel Cut Out
VIEW A-A
SCALE 4 : 1



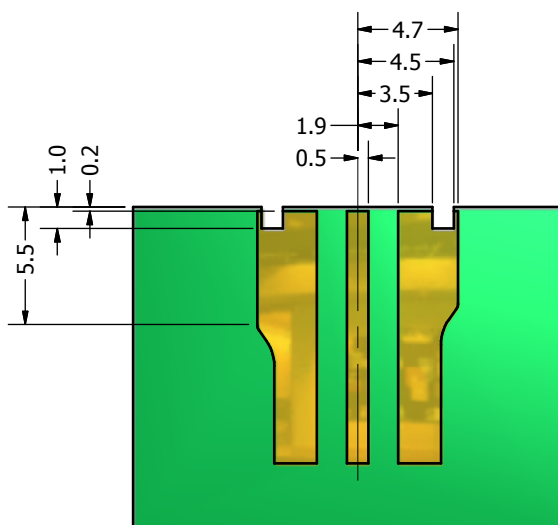
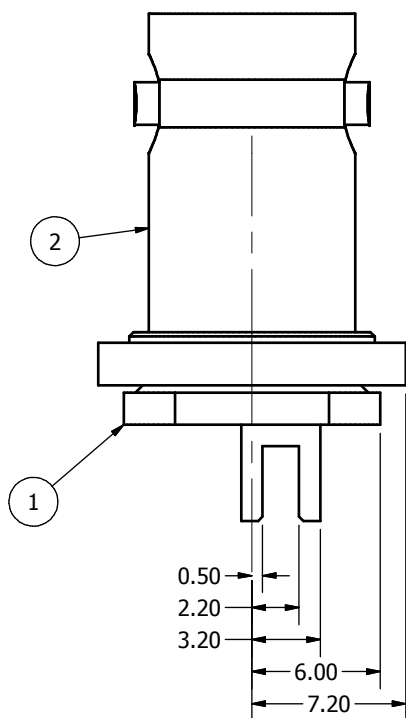
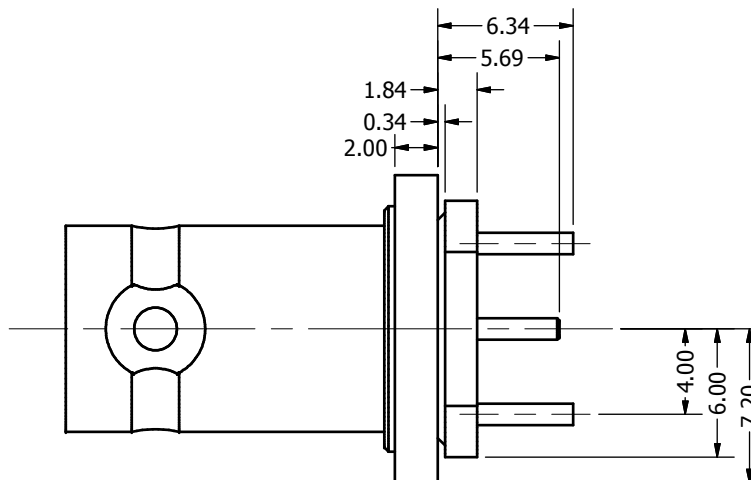
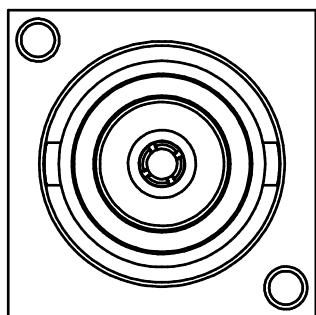
Typical
panel
layout.

Panel thickness
 5.0mm Max.

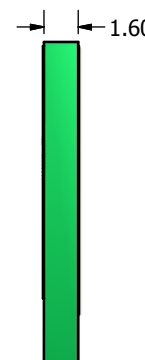
REVISION HISTORY			
REV	DESCRIPTION	DATE	APPROVED
1.0	Origin	25/03/2008	P. Fayers
1.1	Application data added	25/03/2008	P. Fayers

Status: WorkInProgress	Material: Brass		Finish: Ni Plated		Gen Tol +/- 0.05	DO NOT SCALE		
	Designed by P. Fayers	Checked by	Approved by Date		©2008	Date 25/03/2008	A3	
RoHS Compliant	C.E.I. Ltd		This document and all the data contained herein is and shall remain the property of Cambridge Electronic Ind. Ltd and may not be used or copied for any purpose whatsoever without the written permission of Cambridge Electronic Ind. Ltd	Two Part Rear Mount Outer with screws				
				71X-0044-33				
				Issue 1.1 Sheet 1 / 2				

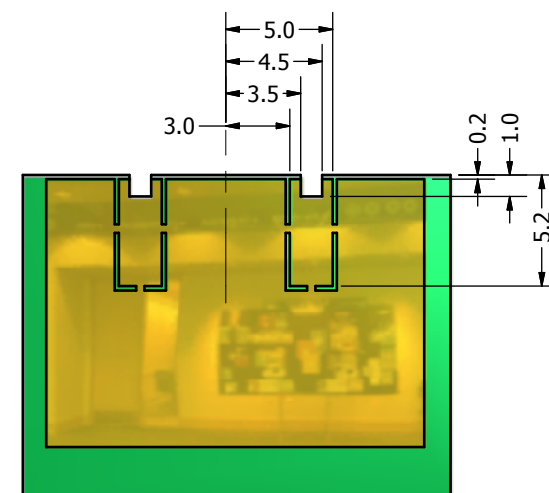
This document and all the
data contained herein is and
shall remain the property of
Cambridge Electronic Ind. Ltd
and may not be used or copied
for any purpose whatsoever
without the written permission
of Cambridge Electronic Ind. Ltd



Top Copper



Suggested PCB Layout
Based on FR4 1.60mm
1oz Cu



Bottom Copper

Parts List		
ITEM	QTY	DESCRIPTION
1	1	XBT-1058-NGAY
2	1	NPF 3208

Status: WorkInProgress	Material:		Finish:		Gen Tol +/- 0.05	DO NOT SCALE	
	Designed by P. Fayers	Checked by	Approved by	Date	©2008	Date 25/03/2008	A3
RoHS Compliant	C.E.I. Ltd		This document and all the data contained herein is, and shall remain the property of Cambridge Electronic Ind. Ltd and may not be used or copied for any purpose whatsoever without the written permission of Cambridge Electronic Ind. Ltd		Two Part Rear Mount Outer with screws		
					71X-0044-33		Issue 1.1 Sheet 2 / 2