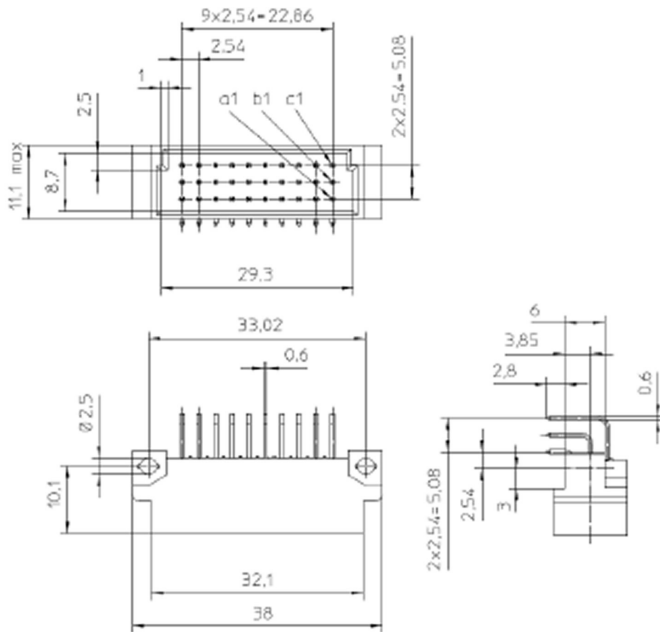


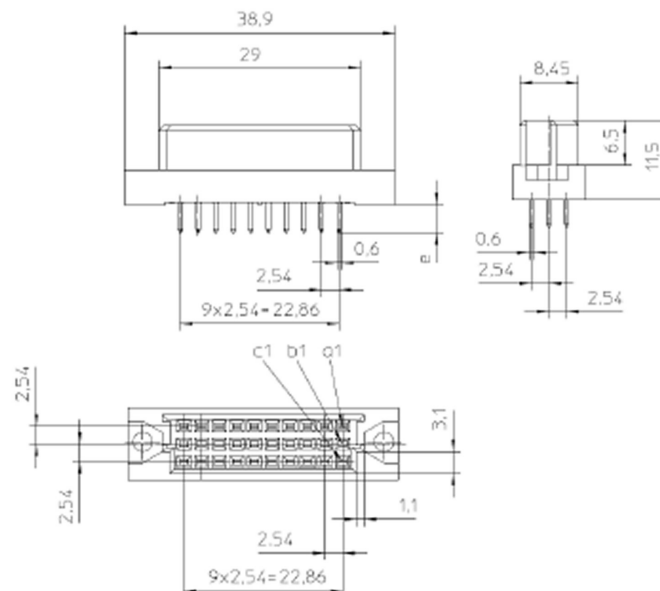
Valukumpu Oy

Type C/3, IEC603, DIN 41612

Two Part Connectors for PCB



Male Connector



Female Connector

General Description

The DIN 41612 C/3 type body offers a choice of two contact arrangements over 3 rows. It is complimentary to the standard C body connector range and has an overall width of 38mm. It is available in both male and female connection types.

This is a PCB mounted connector and is offered with right angle and straight solder tails for 1.6mm PCB thicknesses. For PCB boards of 2.4mm thick or if press-in termination is required for 1.5 to 4.0mm depth, then a longer straight solder tail specification is available. Wire wrap tail and hand solder eyelets are also available.

Each DIN 41612 connector is offered with a number of different contact and termination finishes.

Electrical Specification

Current Rating:	1.5A at 20°C 1A at 80°C 0.75A at 100°C
Proof Voltage:	Contact/contact 1000Vrms Contact/Test Panel 1550Vrms
Contact Resistance:	≤20 mΩ
Insulation Resistance:	≥10 ⁶ MΩ
Connector Type:	Male / Female

Materials

Connector Body:	Glass fibre filled polyester
Female Contact:	Phosphor Bronze
Male Contact:	Copper Alloy
Contact Plating:	Ni / Au Ni / PdNi / Au

Environmental

Temp Range:	-55 to +125°C
Flammability:	UL 94 V-O
Insertion Force:	21 pole ≤20N
Retention Force:	≥0.15 N / Contact pair
Mechanical endurance, salt mist, industrial atmosphere and other requirements according to IEC603	

Quality

Contact surfaces mechanically polished
Dual-beam female contact profiled to trapezoidal form.

Valukumpu Oy
Type C/3, IEC603, DIN 41612
Two Part Connectors for PCB

VK	—	C/3	020	M	S	—	C1	A	—	0,8	/	5	—	001	—	NP
----	---	-----	-----	---	---	---	----	---	---	-----	---	---	---	-----	---	----

C/3	CONNECTOR TYPE	
	Three row body 1A	C/3

020	CONTACT ARRANGEMENT AND NUMBER OF POSITIONS	
		020
		030
	Special types	Z

M	TYPE OF CONTACT	
	Female	F
	Male	M

S	TYPE OF TERMINATION	
	Solder	S
	Wrap	W
	Press-in	P

C1	Complete connector with contact finish of gold
-----------	--

A	TERMINATION STYLE				
		F	FP	M	MP
Right angle solder tail for 1.6 mm thick boards	A				
Straight solder tail for 1.6 mm thick boards	D				
Straight solder tail for 2.4 mm thick boards (Press-in from 1.5 to 4.0 mm)	E				
Wire wrap tail	F				
Wire wrap tail	H				
Hand solder eyelet	O				

0,8	CONTACT FINISH	
0,8	0.8 µm hard gold over 2 µm nickel	
1,25	1.25 µm hard gold over 2 µm nickel	
2,5	2.5 µm hard gold over 3 µm nickel	
...	other platings on request	

5	TERMINATION FINISH	
1	1 µm tin over nickel on press-in area	
5	5 µm tin over nickel	
1,25	1.25 µm gold over nickel on contact area (5mm from the end)	
0,1	0.1 µm gold over nickel	
...	other platings on request	

-001	MARKING FOR SPECIAL TYPES	
Eg	First Make – Last Break Option: Male pins in any row may be extended 0.50 mm for ground before signal applications, please contact manufacturer.	

-NP	ALTERNATIVE CONTACT PLATING	
	Gold flash over nickel palladium over nickel	