

6GHz TNC Coaxial Connectors

PCB Edge Mounting TNC Connector

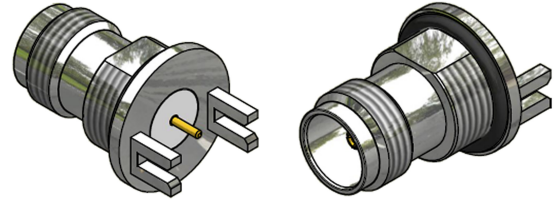
Part Number C-SX-157

General Description

The C-SX-157 is a PCB edge mounted TNC Connector which meets the SMPTE 424M standard, allowing bit-rates of 2.970Gbit/s over a single coaxial connection. The connector is suitable for PCB thicknesses up to 1.55mm to 1.6mm and each connector comes with nut and washer.

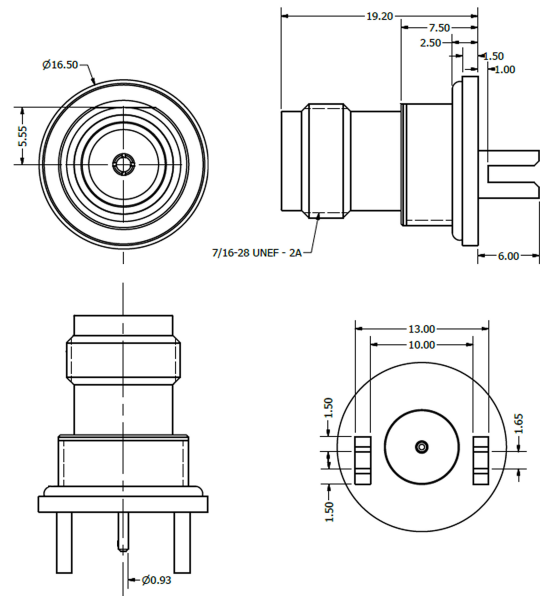
Electrical Specification

Impedance:	75 Ω
Frequency Range:	0-6.25GHz
Working Voltage:	500Vrms
Dielectric Withstanding	
Voltage:	1500Vrms
Reflection Factor ^(VSWR) :	1.07 ^(max) DC - 3GHz 1.19 ^(max) 3 - 6GHz
Contact Resistance:	Centre contact 1.5m Ω Outer contact 0.2m Ω
Insulation Resistance:	>5000M Ω
Connector Type:	Female
Materials	
Centre Pin:	Phosphor Bronze / 10 μ "Au
Metal Parts:	Brass / Ni
Insulators:	PTFE
Seal	Silicon Rubber
Environmental	
Temp Range:	-65 to +165°C
Mating Cycles:	250
Processing	
Maximum hand soldering temperature	265°C



Features

- Optimised for 6G HD-SDI environments
- Meets SMPTE 424M Standard
- PCB edge mounting style minimises signal path discontinuities



6G SDI

CoaxVision™

