

6GHz F-Type Coaxial Connectors

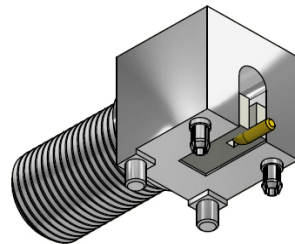
Right Angle Surface Mount F Type Socket

Part Number C-SX-215

General Description

This precision 75Ω F Connector is a right angle mounted PCB connector which is suitable for frequencies up to 6GHz. The connector is part of the 6G Coaxvision range and meets the SMPTE ST-2081 standard for 6Gbits/s over a single channel.

The C-SX-215 is a right angled F Type connector which is part of our Rapid ConnEXions range which have been optimised for machine placement. The connector features a surface mounted pin and locking posts and is designed for a board thickness of 1.6mm. As a specialist connector design house we can offer other board thicknesses if required.



Features

- Precision 75Ω F Type Connector
- Designed for HD SDV applications

Electrical Specification

Impedance: 75Ω
 Frequency Range: 0-6GHz
 Working Voltage: 250Vrms
 Dielectric Withstanding Voltage: 750Vrms
 Reflection Factor (VSWR): 1.23(max)0 - 3.2GHz
 1.48(max)3.2 - 6GHz

Connector Type:

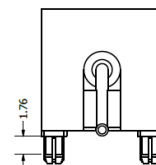
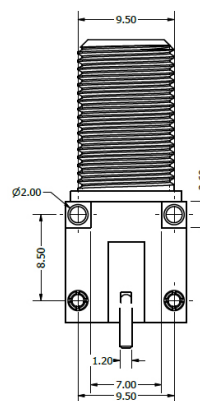
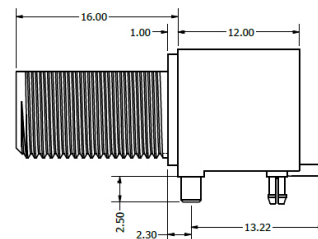
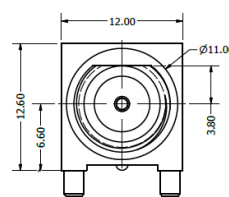
Materials: PhosBronze / 10 μAu
 Centre Pin: Brass/Ni
 Metal Parts: PTFE

Environmental

Temp Range: -20 to +85°C
 Mating Cycles: 200
 Mating Centre Conductor Diameter: 0.76-1.07mm

Processing

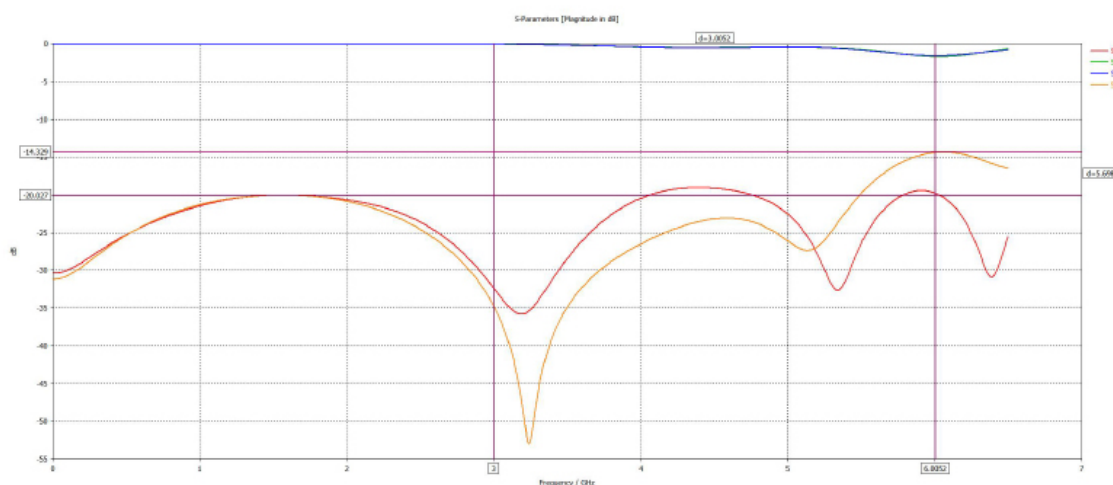
Insertion Force: >8N
 Maximum reflow and hand soldering temperature 260°C, with 300s dwell time



Rapid ConnEXions

6G SDI

Return / Insertion Loss Graph Inc PCB element



CAMBRIDGE
 ELECTRONIC INDUSTRIES

Tel: +44 (0)1223 860041
 Tel: +44 (0)1223 863377
 Email: sales@cambridgeelectronics.com