

6GHz N Type Coaxial Connectors

N Type Edge Mounted Connector for 6G Applications

Part Number C-SX-235HT

Issue 1.0

General Description

PCB Edge Mount 'N' Series connector suitable for use in lower frequency microwave systems, where ruggedness and high transmission power are needed. Typical applications include spectrum analysers , Mobile communication base stations and RF plasma generators.

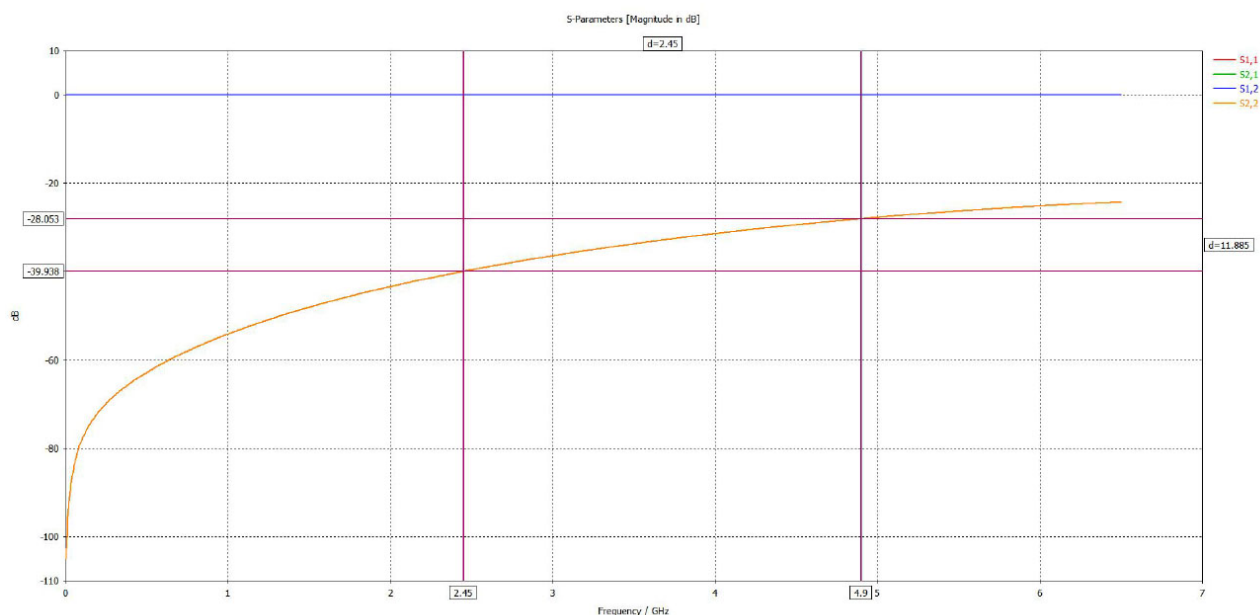
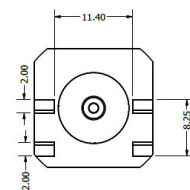
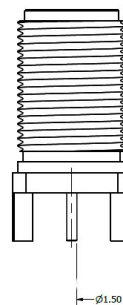
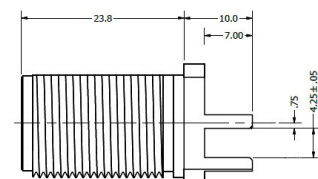
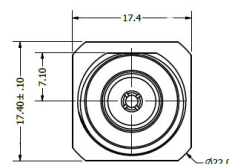
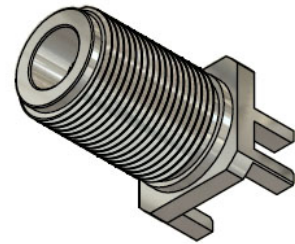
The C-SX-235HT is a bulkhead edge mounting N Type socket connector which for use with printed circuit boards of thickness 4.0mm. The connector is supplied with nut and washer.

Features

- Precision 6GHz 50Ω N Type PCB Connectors
- PCB Edge Mounted

Electrical Specification

Impedance:	50Ω
Frequency Range:	0-6GHz
Working Voltage:	1000Vrms
Dielectric Withstanding Voltage:	2500Vrms
Reflection Factor (VSWR):	1.24 Max DC-2.45GHz 1.63 Max 2.45-4.90GHz
Contact Resistance:	Centre contact ≤1mΩ Outer contact ≤1mΩ
Insulation Resistance:	≥5000 MΩ
Connector Type:	Female
Materials	
Centre Pin:	BeCu / Au plating
Metal Parts:	Brass/Ni
Insulators:	PTFE
Environmental	
Temp Range:	-65 to +85°C
Mating Cycles:	250



Drawing Issue 1.7



CAMBRIDGE
ELECTRONIC INDUSTRIES

Tel: +44 (0)1223 860041
Tel: +44 (0)1223 863377
Email: sales@cambridgeelectronics.com