

# 12GHz SMA Coaxial Connectors

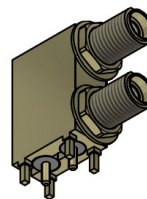
## Dual Port Right Angle PCB Bulkhead Mounted Connector

### Part Number C-SX-241

#### Issue 1.0

#### General Description

The C-SX-241 is a dual port right angle PCB bulkhead mounted SMA connector which operates up to frequencies of 12GHz over a single channel. The connector has a dual through hole contacts and a 3.3mm leg length. The connector is supplied with nuts and washers.



#### Electrical Specification

Impedance: 50Ω  
 Frequency Range: 0-12GHz  
 Working Voltage: 500Vrms  
 Dielectric Withstanding Voltage: 1000Vrms  
 Reflection Factor (VSWR): 1.19(max)0 - 12GHz

Contact Resistance: Centre contact 3.0mΩ  
 Outer contact 2.0mΩ

Insulation Resistance: >5000M Ω  
 Connector Type: Female

#### Materials

Centre Pin: BeCu / 10 μ"Au  
 Metal Parts: Brass / 5 μ"Au  
 Insulators: PTFE

#### Environmental

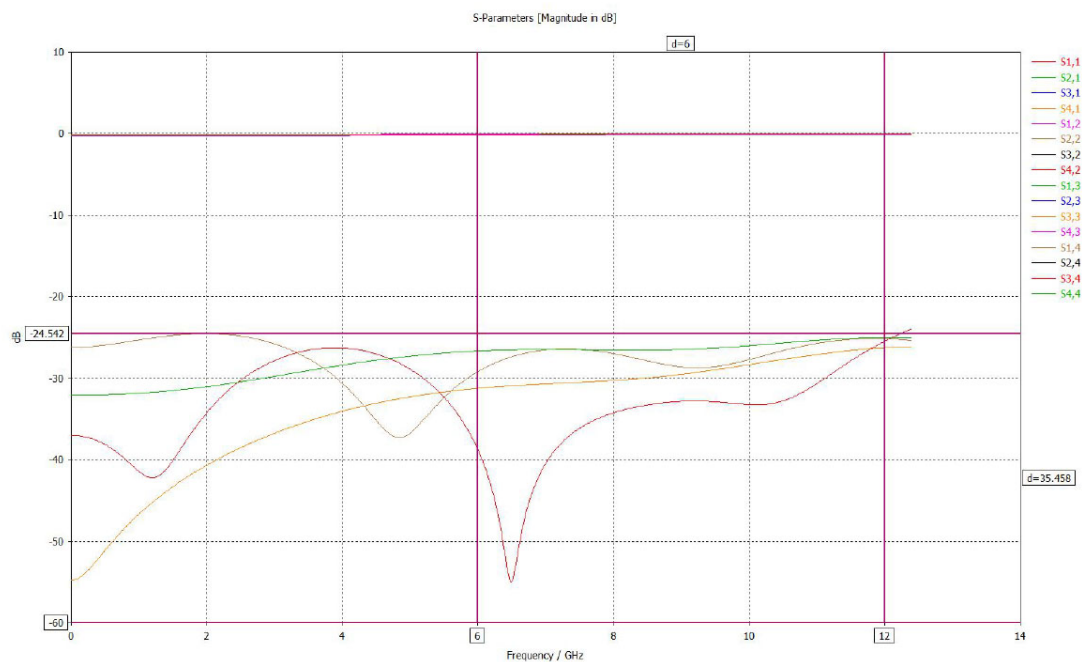
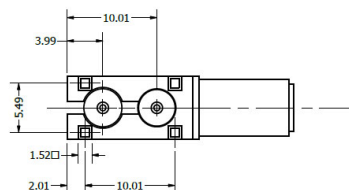
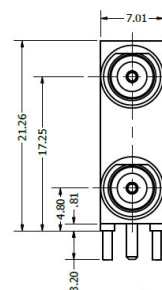
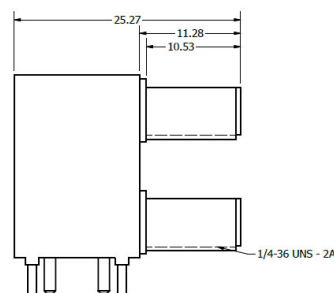
Temp Range: -65 to +85°C  
 Mating Cycles: 500

#### Processing

Suitable for hand or wave soldering up to 245°C

#### Features

- Meets interface standards as per MIL-STD-348
- Dual port design offers greater wiring densities
- For PCB thicknesses up to 2.2mm



Drawing Issue 1.3



**CAMBRIDGE**  
 ELECTRONIC INDUSTRIES

Tel: +44 (0)1223 860041  
 Tel: +44 (0)1223 863377  
 Email: [sales@cambridgeelectronics.com](mailto:sales@cambridgeelectronics.com)