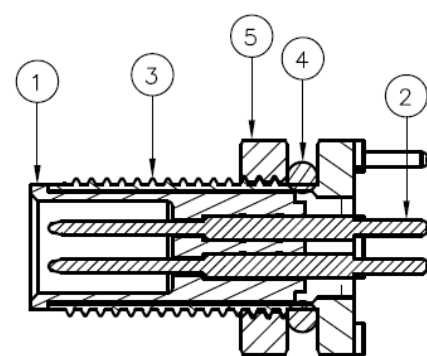


Specifications:  
Current Rating: 1A AC/DC  
Voltage Rating: 60V AC/DC  
Contact Resistance: 5m ohm. Max.  
Insulation Resistance: 100M ohm. Min.  
Withstanding Voltage: 500V AC/Minute  
Waterproof rate: IP67

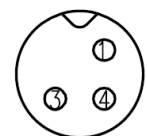
Operating Temperature Range:-20°C ~ +80°C



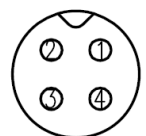
Section A-A

CC05-XXP-FA-PBS

With Shielding  
Panel Mount PCB Dip  
Front Fastened A Coding  
Plug  
No. of Contacts  
M5

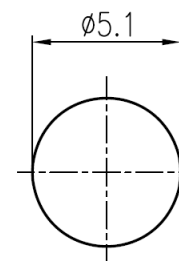


3Pin

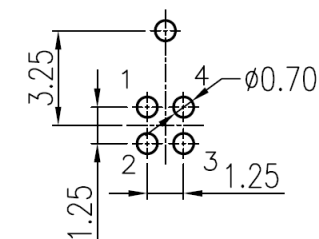


4Pin

ITEM	Description	Material	Remark	Q'TY
1	Insulator	Nylon	UL94V-0 Black	1
2	Terminal	Copper Alloy	Gold Plated	3~4
3	Shell	Copper Alloy	Nickel Plated	1
4	Seal ring	Silicone	Black	1
5	Nut	Copper Alloy	Nickel Plated	1



Recommended Panel CUT-Out  
Thickness:4.0 Max



Recommended PCB Layout  
TOL:±0.05mm

DO NOT SCALE

Unit of Measure: millimetres (mm)



Designed by Owen Page
--------------------------

X.X	- +-0.30
X.XX	- +-0.20

**Design Right  
Protected**

©2023

Date	21 08 2023
------	------------

	A4
--	----

**RoHS  
Compliant**

**Cambridge  
Electronic  
Industries Ltd**

This document and all the data contained herein is and shall remain the property of Cambridge Electronic Industries Ltd and may not be used or copied for any purpose whatsoever without the written permission of Cambridge Electronic Industries Ltd.

n	ic	Description:	M5 Plug Straight Dip Type With Shielding						
---	----	--------------	--	--	--	--	--	--	--

Part No:	CC05-XXP-FA-PBS
----------	-----------------

Issue 1.0
--------------

Sheet  
1 / 1