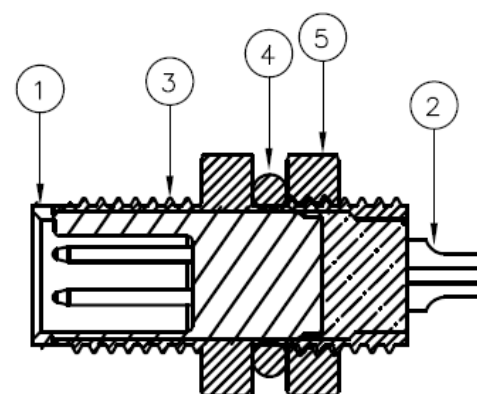
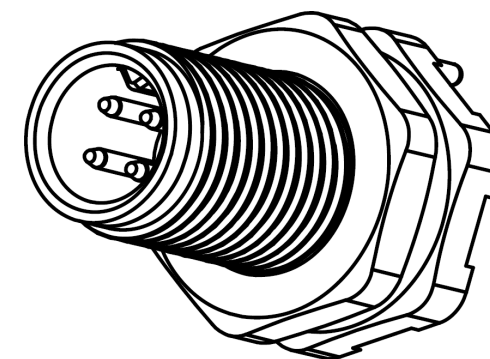


WITH LIQUID GLUE

Specifications:
Current Rating: 1A AC/DC
Voltage Rating: 60V AC/DC
Contact Resistance: 5m ohm. Max. Insulation Resistance: 100M ohm. Min.
Withstanding Voltage: 500V AC/Minute
Waterproof rate: IP67
Operating Temperature Range: -20°C ~ +80°C

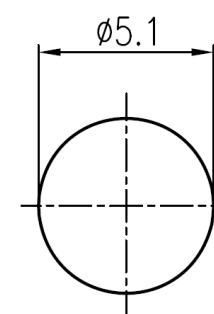
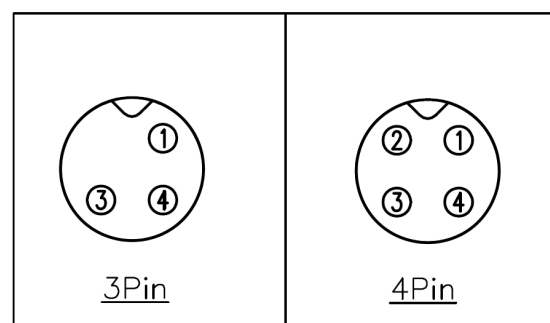


Section A-A

CC05-XXP-RA-PM

Panel Mount Solder
Rear Fastened A Coding
Plug
No. of Contacts
M5


PIN Assignments Front View



Recommended Panel CUT-Out
Thickness: 2.5 Max

ITEM	Description	Material	Remark	Q'TY
1	Insulator	Nylon	UL94V-0 Black	1
2	Terminal	Copper Alloy	Gold Plated	3~4
3	Shell	Copper Alloy	Nickel Plated	1
4	Seal ring	Silicone	Black	1
5	Nut	Copper Alloy	Nickel Plated	1

REVISION HISTORY				
REV	DESCRIPTION	CHG REF	DATE	DESIGNER
1.0	Origin	-	21 08 2023	Owen Page

DO NOT SCALE			Designed by Owen Page	X.X - +0.30 X.XX - +0.20	Design Right Protected	©2023	Date 21 08 2023	A4
Unit of Measure: millimetres (mm)								
<div>RoHS Compliant</div>	Cambridge Electronic Industries Ltd	This document and all the data contained herein is and shall remain the property of Cambridge Electronic Industries Ltd and may not be used or copied for any purpose whatsoever without the written permission of Cambridge Electronic Industries Ltd.						
		Description: M5 Plug Rear Fastened Solder Type Part No: CC05-XXP-RA-PM						
							Issue 1.0	Sheet 1 / 1