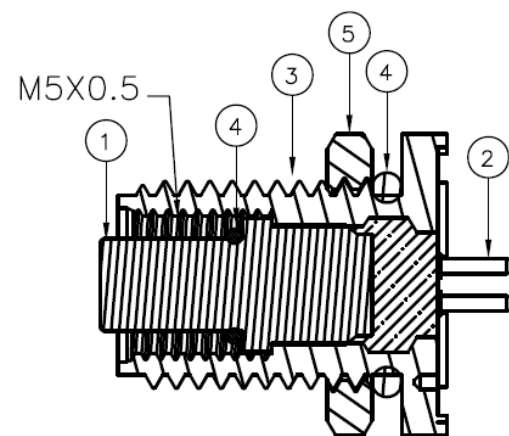


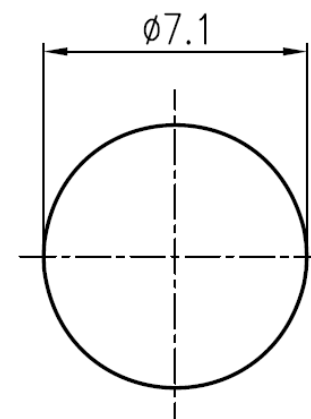
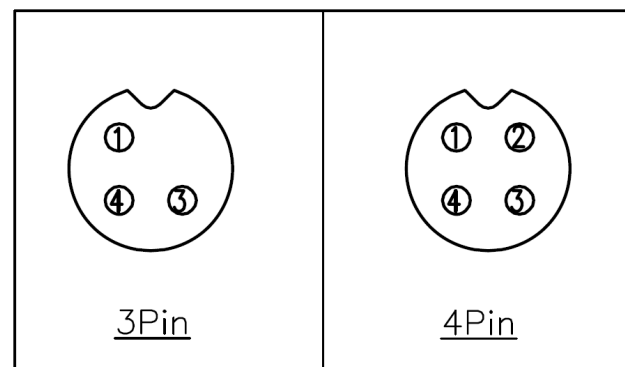
Specifications:
Current Rating: 1A AC/DC
Voltage Rating: 60V AC/DC
Contact Resistance: 5m ohm. Max.
Insulation Resistance: 100M ohm. Min.
Withstanding Voltage: 500V AC/Minute
Waterproof rate: IP67
Operating Temperature Range: -20°C ~ +80°C

CC05-XXS-FA-PB8
8: M7
Panel Mount PCB Dip
Front Fastened A Coding
Socket
No. of Contacts
M5

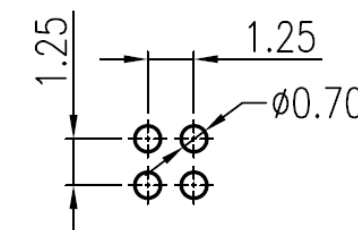


PIN Assignments Front View

Section A-A



Recommended Panel CUT-Out
Thickness: 4.0 Max



Recommended PCB Layout
TOL: ±0.05mm

ITEM	Description	Material	Remark	Q'TY
1	Insulator	Nylon	UL94V-0 Black	1
2	Terminal	Copper Alloy	Gold Plated	3~4
3	Shell	Copper Alloy	Nickel Plated	1
4	Seal ring	Silicone	Green/Black	2
5	Nut	Copper Alloy	Nickel Plated	1

DO NOT SCALE
Unit of Measure: millimetres (mm)

Third Angle Projection

Designed by
Owen Page

X.X - +0.30
X.XX - +0.20

Design Right
Protected

©2023

Date
21 08 2023

DESIGNER
Owen Page

A4

RoHS
Compliant

Cambridge
Electronic
Industries Ltd

This document and all the data
contained herein is and shall remain
the property of Cambridge Electronic
Industries Ltd and may not be used
or copied for any purpose
whatsoever without the written
permission of Cambridge Electronic
Industries Ltd.

Description:
M5 Socket Straight Dip Type
Part No:
CC05-XXS-FA-PB8

Issue
1.0

Sheet
1 / 1