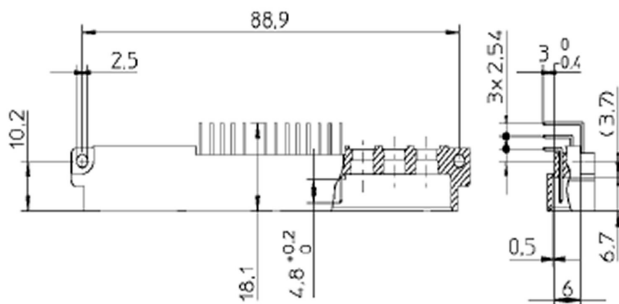
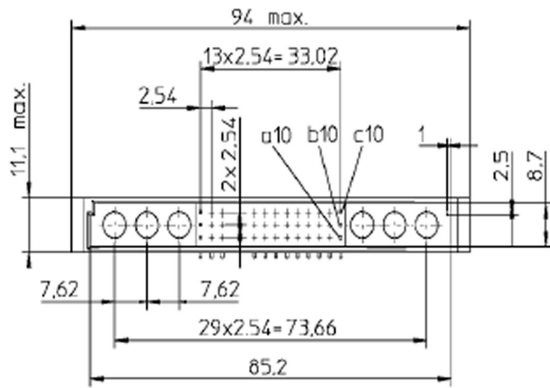


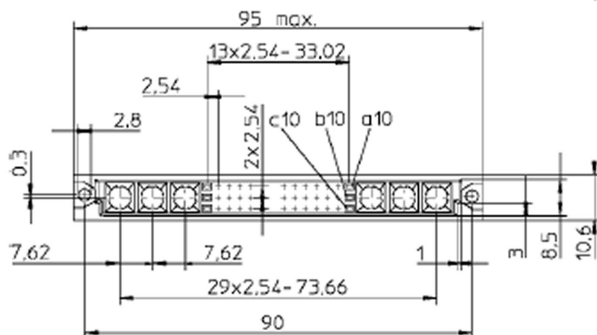
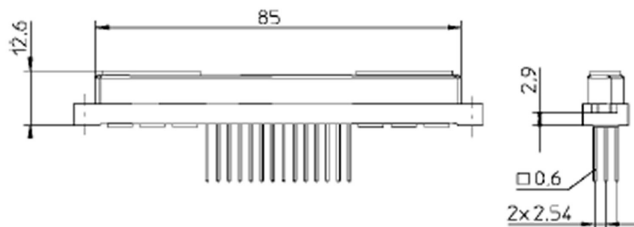
# Valukumpu Oy

## Type M, IEC603, DIN 41612

### Two Part Connectors for PCB



Male Connector



Female Connectors

#### General Description

The DIN 41612 M type body offers a choice of twelve contact arrangements over 3 rows, mixed with between 2 and 8 power contacts. It has an overall width of 95mm and is available in both male and female connection types.

This is a PCB mounted connector and is available in a right angle mounted version for boards up to 1.6mm thick; Two straight solder tail options for boards up to 1.6mm or 2.4mm in thickness, with the flexibility to use press in style with the 2.4mm connectors for 1.5 to 4.0mm thick boards. There are also three lengths of wire wrap tail.

Each DIN 41612 connector is offered with a number of different contact and termination finishes. Power contacts sold separately.

#### Electrical Specification

Current Rating:	1.5A at 20°C
Normal Pins:	1A at 80°C
	0.75A at 100°C
Power Contacts:	40A max
Proof Voltage:	Contact/contact 1000Vrms
	Contact/Test Panel 1550Vrms
Contact Resistance:	≤20 mΩ
Insulation Resistance:	≥10 <sup>6</sup> MΩ
Connector Type:	Male/Female

#### Materials

Connector Body:	Glass fibre filled polyester
Female Contact:	Phosphor Bronze
Male Contact:	Copper Alloy
Contact Plating:	Ni / Au
	Ni / PdNi / Au

#### Environmental

Temp Range:	-55 to +125°C
Flammability:	UL 94 V-O
Insertion Force:	42 pole ≤40N
(without coaxial contacts)	60 pole ≤57N
	78 pole ≤74N
Retention Force:	≥0.15 N / Contact pair
Mechanical endurance, salt mist, industrial atmosphere and other requirements according to IEC603	
Quality	Contact surfaces mechanically polished
	Dual-beam female contact profiled to trapezoidal form.

Valukumpu Oy  
Type M, IEC603, DIN 41612  
Two Part Connectors for PCB

VK — M 052 M S — C1 A — 0,8 / 5 —001 -NP

M	CONNECTOR TYPE
	Three row body M

052	CONTACT ARRANGEMENT AND NUMBER OF POSITIONS
	024
	016
	008
	042
	028
	014
	060
	040
	020
	078
	052
	026
Special types	Z

M	TYPE OF CONTACT
	Female F
	Male M

S	TYPE OF TERMINATION
	Solder S
	Wrap W
	Press-in P

C1	Complete connector with contact finish of gold
----	--

A	TERMINATION STYLE			
	F FP M MP			
Right angle solder tail for 1.6 mm thick boards	A			
Straight solder tail for 1.6 mm thick boards	D			
Straight solder tail for 2.4 mm thick boards (Press-in from 1.5 to 4.0 mm)	E			
Wire wrap tail	F			
Wire wrap tail	H			
Wire wrap tail	K			

0,8	CONTACT FINISH
0,8	0.8 µm hard gold over 2 µm nickel
1,25	1.25 µm hard gold over 2 µm nickel
2,5	2.5 µm hard gold over 3 µm nickel
...	other platings on request

5	TERMINATION FINISH
1	1 µm tin over nickel on press-in area
5	5 µm tin over nickel
1,25	1.25 µm gold over nickel on contact area (5mm from the end)
0,1	0.1 µm gold over nickel
...	other platings on request

-001	MARKING FOR SPECIAL TYPES
Eg.	First make – Last Break Option: Male pins in any row may be extended 0.50 mm for ground before signal applications.

-NP	ALTERNATIVE CONTACT FINISH
	Gold flash over nickel palladium over nickel



**CAMBRIDGE**  
ELECTRONIC INDUSTRIES

Tel: +44 (0)1223 860041

Tel: +44 (0)1223 863377

Email: [sales@cambridgeelectronics.com](mailto:sales@cambridgeelectronics.com)