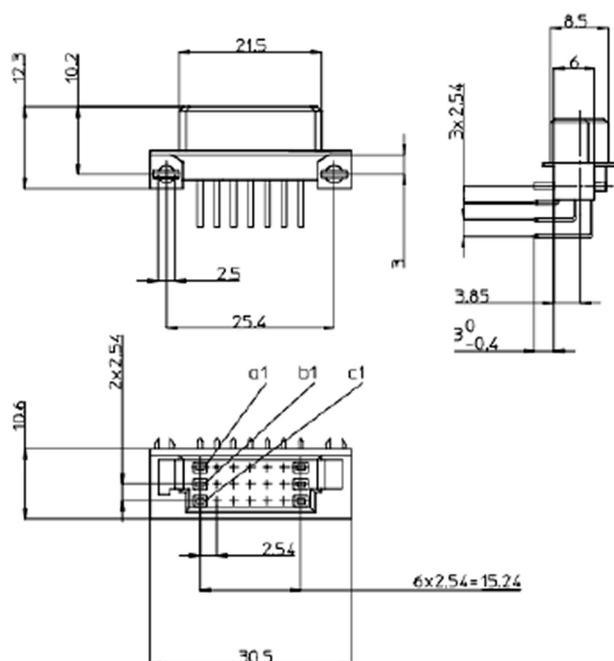


Valukumpu Oy

## Type R/4, Reversed, IEC603, DIN 41612 Two Part Connectors for PCB



Female Connector

### General Description

The DIN 41612 R/4 type body offers a choice of nine contact arrangements over 3 rows. It has an overall width of 30mm and is only available in a reversed female connector and is a quarter length R body DIN41612.

This is a PCB mounted connector and is available in a right angle mounted version for boards up to 1.6mm thick; Two straight solder tail options for boards up to 1.6mm or 2.4mm in thickness, with the 2.4mm thickness also being suitable for press-fit between 1.5mm and 4.0mm in thickness. Three lengths of wire wrap tail style are also available.

Each DIN 41612 connector is offered with a number of different contact and termination finishes.

### Electrical Specification

Current Rating:	1.5A at 20°C
Normal Pins:	1A at 80°C
	0.75A at 100°C
Proof Voltage:	Contact/contact 1000Vrms
	Contact/Test Panel 1550Vrms
Contact Resistance:	≤20 mΩ
Insulation Resistance:	≥10 <sup>6</sup> MΩ
Connector Type:	Female

### Materials

Connector Body:	Glass fibre filled polyester
Female Contact:	Phosphor Bronze
Male Contact:	Copper Alloy
Contact Plating:	Ni / Au
	Ni / PdNi / Au

### Environmental

Temp Range:	-55 to +125°C
Flammability:	UL 94 V-O
Insertion Force:	32 pole ≤30N
	64 pole ≤60N
	96 pole ≤90N
Retention Force:	≥0.15 N / Contact pair
Mechanical endurance, salt mist, industrial atmosphere and other requirements according to IEC603	
Quality	Contact surfaces mechanically polished
	Dual-beam female contact profiled to trapezoidal form.

VK — R/4 014 F S — C1 A — 0,8 / 5 —001 -NP


R/4	CONNECTOR TYPE
	Three row body 1A Reversed Quarter length R
	R/4

014	CONTACT ARRANGEMENT AND NUMBER OF POSITIONS
	008
	012
	014
	021
	A07
	B07
	X10
	B14
Special types	Z

M	TYPE OF CONTACT
	Female
	Male
	F
	M

S	TYPE OF TERMINATION
	Solder
	Wrap
	Press-in
	S
	W
	P

C1	
	Complete connector with contact finish of gold

A	TERMINATION STYLE			
		F	MP	M
Right angle solder tail for 1.6 mm thick boards	A			
Straight solder tail for 1.6 mm thick boards	D			
Straight solder tail for 2.4 mm thick boards (Press-in from 1.5 to 4.0 mm)	E			
Wire wrap tail	F			
Wire wrap tail	H			
Wire wrap tail	L			

0,8	CONTACT FINISH
0,8	0.8 µm hard gold over 2 µm nickel
1,25	1.25 µm hard gold over 2 µm nickel
2,5	2.5 µm hard gold over 3 µm nickel
...	other platings on request

5	TERMINATION FINISH
1	1 µm tin over nickel on press-in area
5	5 µm tin over nickel
1,25	1.25 µm gold over nickel on contact area (5mm from the end)
0,1	0.1 µm gold over nickel
...	other platings on request

-001	MARKING FOR SPECIAL TYPES
Eg	First Make – Last Break Option: Male pins in any row may be extended 0.50 mm for ground before signal in types D and E.

-NP	ALTERNATIVE CONTACT FINISH
	Gold flash over nickel palladium over nickel

