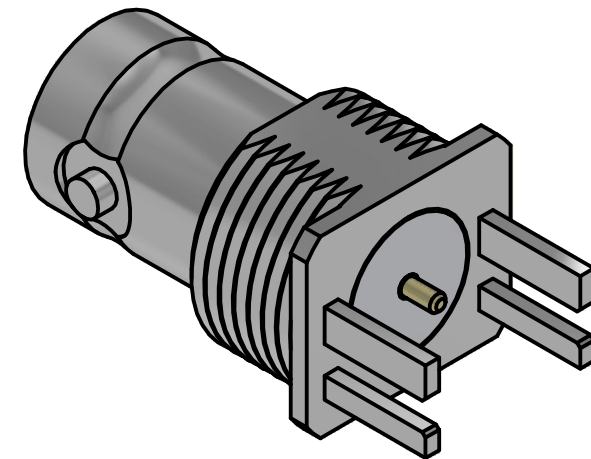
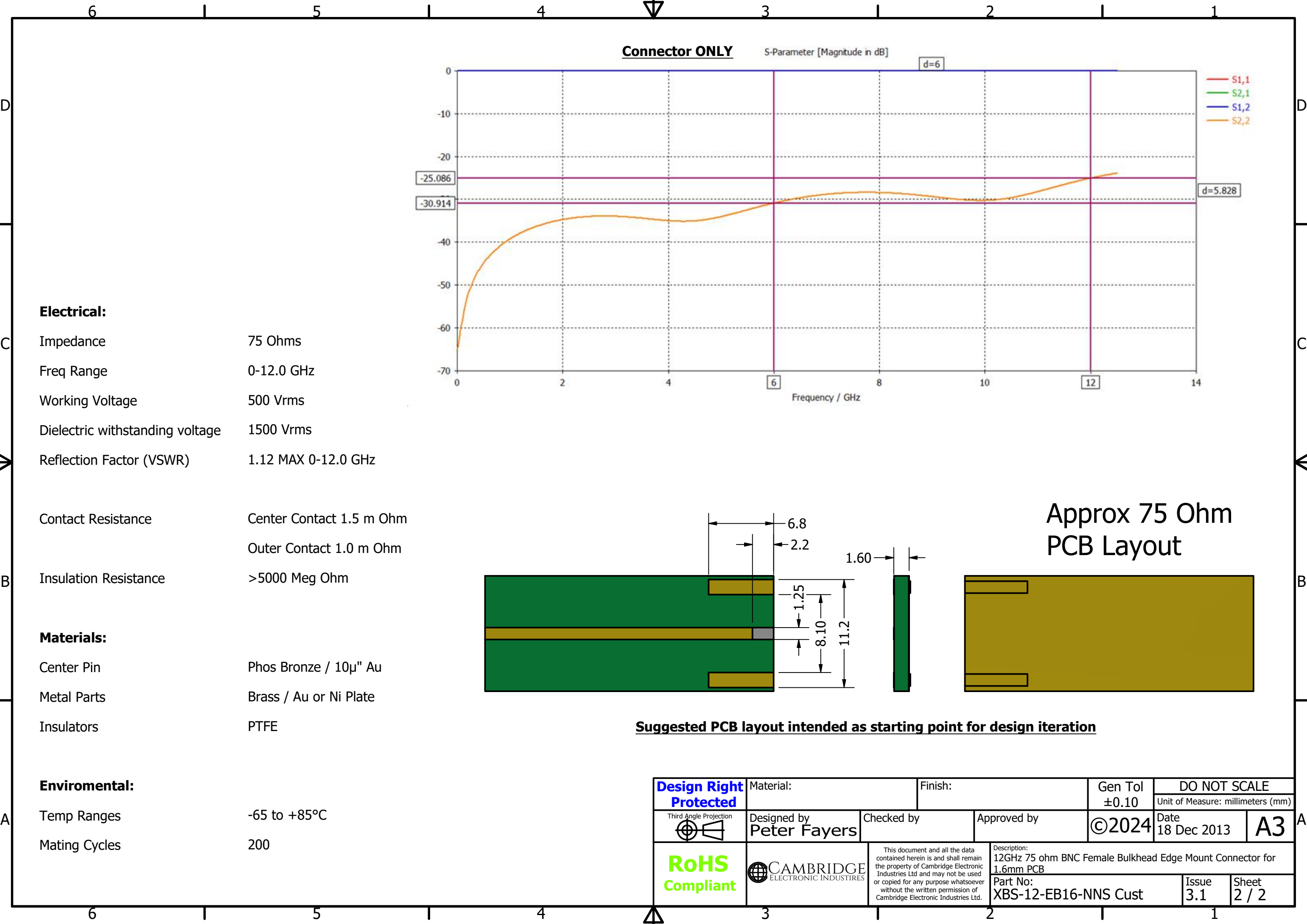


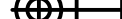

Recomended Panel Cut Out



REVISION HISTORY			
REV	DESCRIPTION	DATE	DESIGNER
3.0	Updated P/N	02 Apr 2024	Peter Millard
3.1	Updated Body	20 Jan 2025	Peter Millard

Design Right Protected	Material:		Finish:		Gen Tol ±0.10	DO NOT SCALE	
	Designed by Peter Fayers		Checked by		©2024	Unit of Measure: millimeters (mm)	
Third Angle Projection		Approved by		Date 18 Dec 2013		A3	
RoHS Compliant		Description: 12GHz 75 ohm BNC Female Bulkhead Edge Mount Connector for 1.6mm PCB		Part No: XBS-12-EB16-NNS Cust		Issue 3.1	Sheet 1 / 2



Design Right Protected	Material:		Finish:		Gen Tol ±0.10	DO NOT SCALE	
						Unit of Measure: millimeters (mm)	
Third Angle Projection 	Designed by Peter Fayers	Checked by	Approved by	©2024	Date 18 Dec 2013	A3	
RoHS Compliant	 CAMBRIDGE ELECTRONIC INDUSTRIES	This document and all the data contained herein is and shall remain the property of Cambridge Electronic Industries Ltd and may not be used or copied for any purpose whatsoever without the written permission of Cambridge Electronic Industries Ltd.		Description: 12GHz 75 ohm BNC Female Bulkhead Edge Mount Connector for 1.6mm PCB			
				Part No: XBS-12-EB16-NNS Cust		Issue 3.1	Sheet 2 / 2