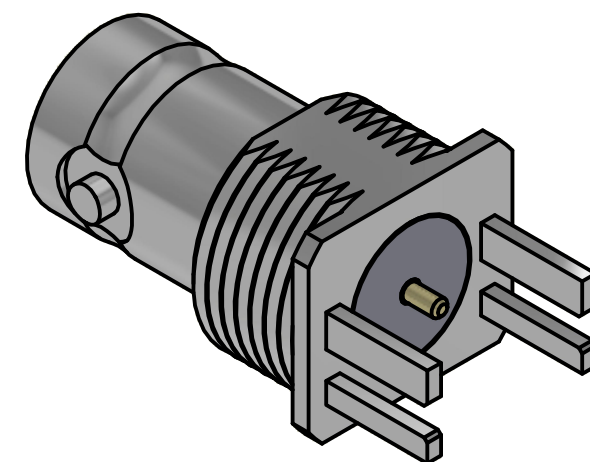
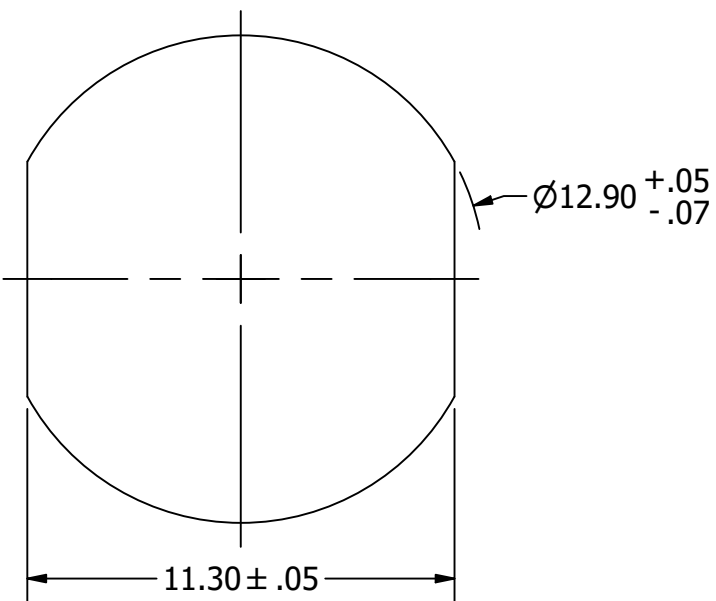
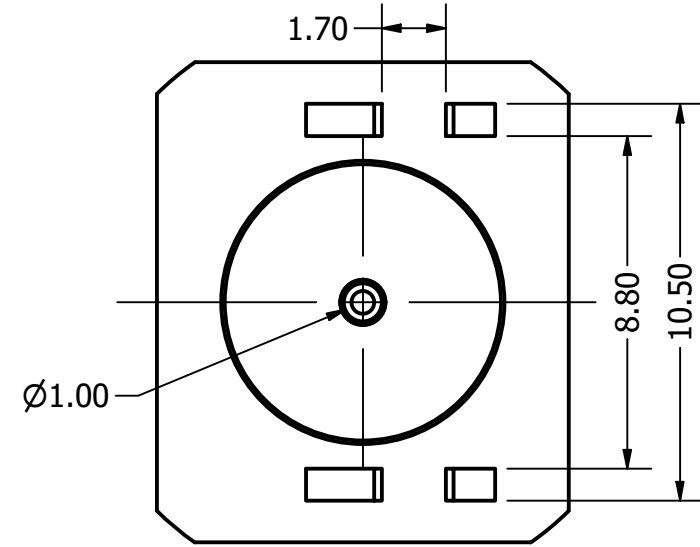
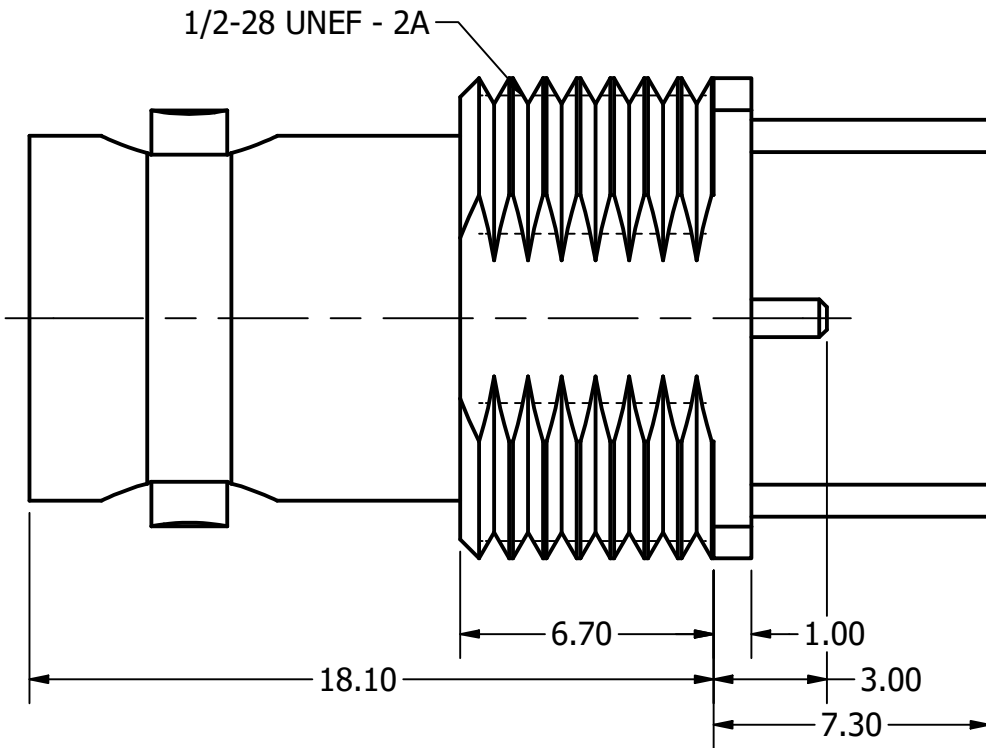
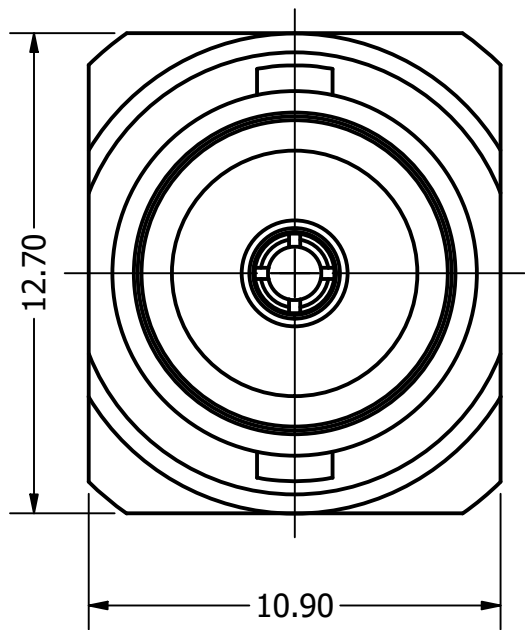



D  
C  
B  
A

D  
C  
B  
A



**Recommended Panel Cut Out**

REVISION HISTORY			
REV	DESCRIPTION	DATE	DESIGNER
3.0	Updated P/N	20 Jun 2024	Peter Millard
3.1	Updated Body	20 Jan 2025	Peter Millard

<b>Design Right Protected</b>	Material:		Finish:		Gen Tol ±0.10	DO NOT SCALE		
	Designed by <b>Peter Fayers</b>		Checked by		Approved by	©2024	Date 24 Jul 2015	<b>A3</b>
<b>RoHS Compliant</b>	 <b>CAMBRIDGE</b> ELECTRONIC INDUSTRIES		This document and all the data contained herein is and shall remain the property of Cambridge Electronic Industries Ltd and may not be used or copied for any purpose whatsoever without the written permission of Cambridge Electronic Industries Ltd.		Description: 12GHz 75 ohm BNC Female Bulkhead Edge Mount Connector for 1.6mm PCB with Protective Sleeve			
					Part No: <b>XBS-12-EB16-NNSU Cust</b>		Issue <b>3.1</b>	Sheet <b>1 / 2</b>

6 1 5 4 3 1 2 1 1

Electrical:

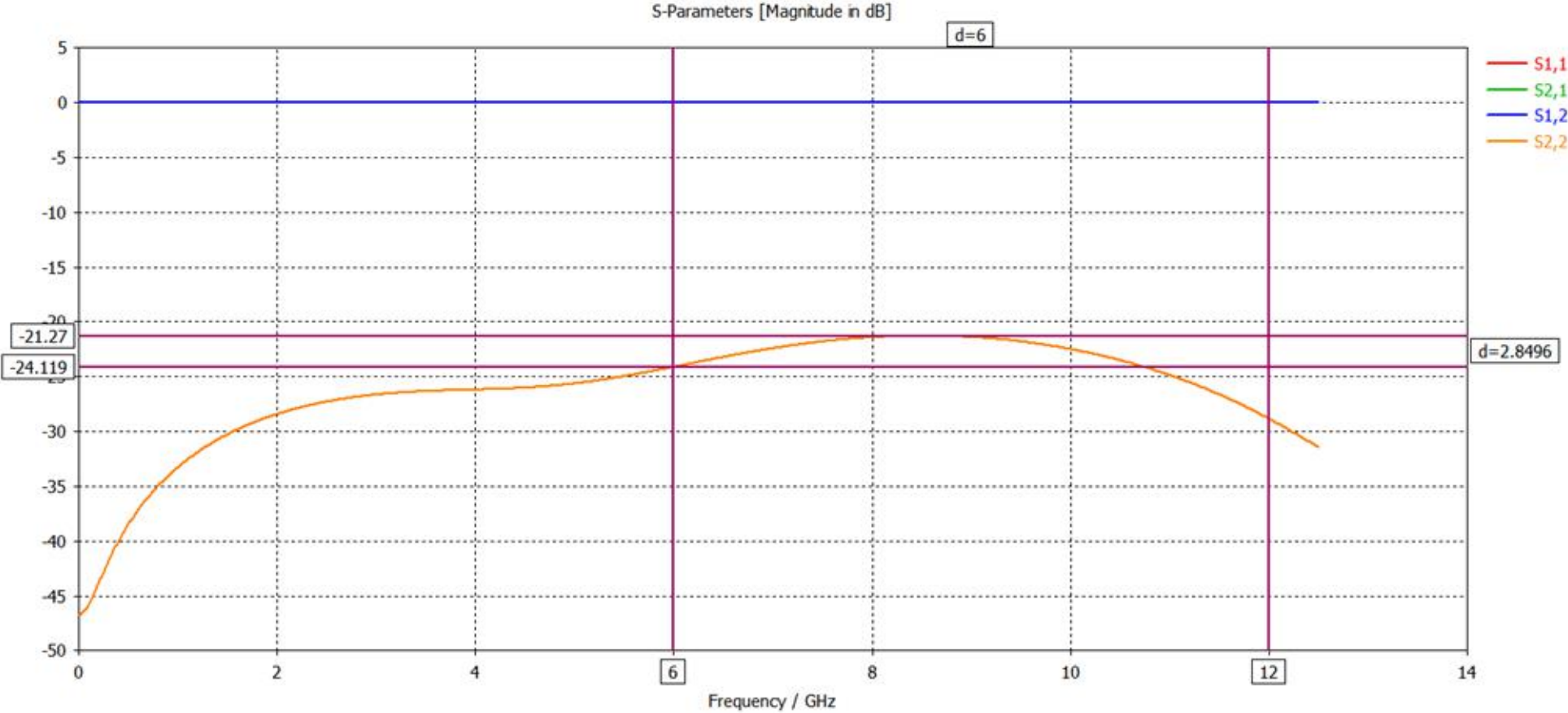
Impedance	75 Ohms
Freq Range	0-12.0 GHz
Working Voltage	250 Vrms
Dielectric withstanding voltage	750 Vrms
Reflection Factor (VSWR)	1.19 MAX 0-12.0 GHz
Contact Resistance	Center Contact 4.0 m Ohm Outer Contact 2.5 m Ohm
Insulation Resistance	>5000 Meg Ohm

Materials:

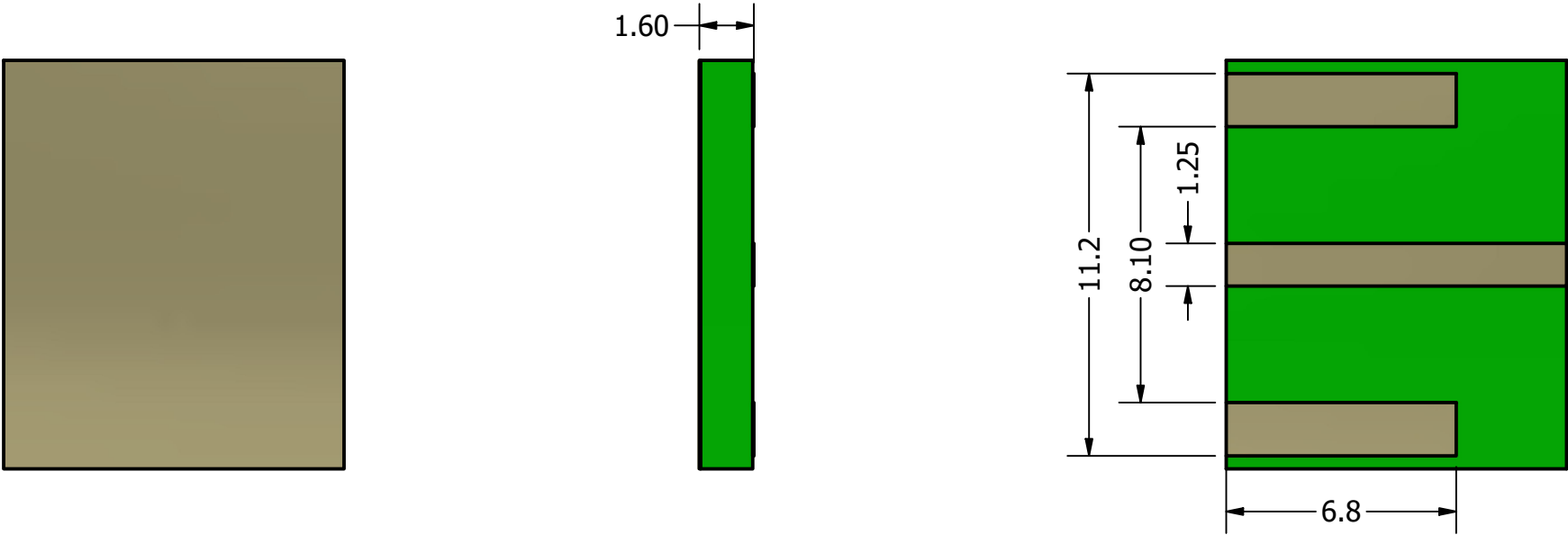
Center Pin	PhosBronze / 10μ" Au
Metal Parts	Brass / 70μ" Ni
Insulators	PTFE

Enviromental:

Temp Ranges	-65 to +85°C
Mating Cycles	250



Suggested PCB layout intended as starting point for design iteration



Design Right Protected	Material:		Finish:		Gen Tol ±0.10	DO NOT SCALE		
						Unit of Measure: millimeters (mm)		
Third Angle Projection 	Designed by Peter Fayers		Checked by		Approved by	©2024	Date 24 Jul 2015	A3
RoHS Compliant			This document and all the data contained herein is and shall remain the property of Cambridge Electronic Industries Ltd and may not be used or copied for any purpose whatsoever without the written permission of Cambridge Electronic Industries Ltd.			Description: 12GHz 75 ohm BNC Female Bulkhead Edge Mount Connector for 1.6mm PCB with Protective Sleeve		
						Part No: XBS-12-EB16-NNSU Cust		Issue 3.1 Sheet 2 / 2