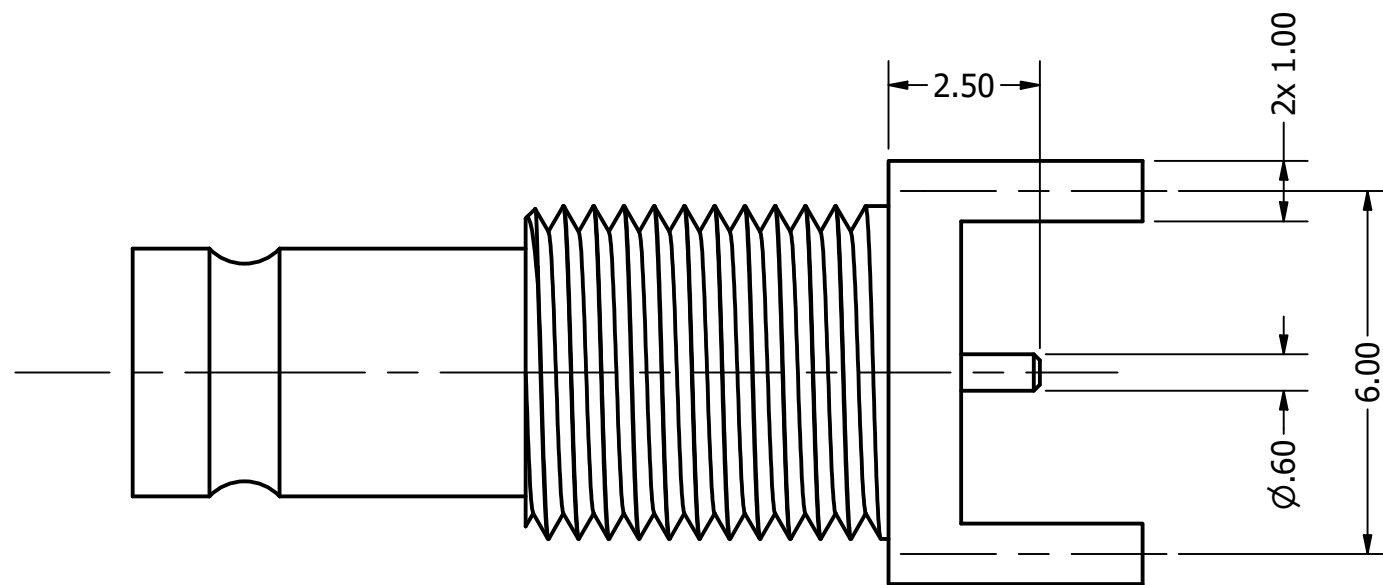
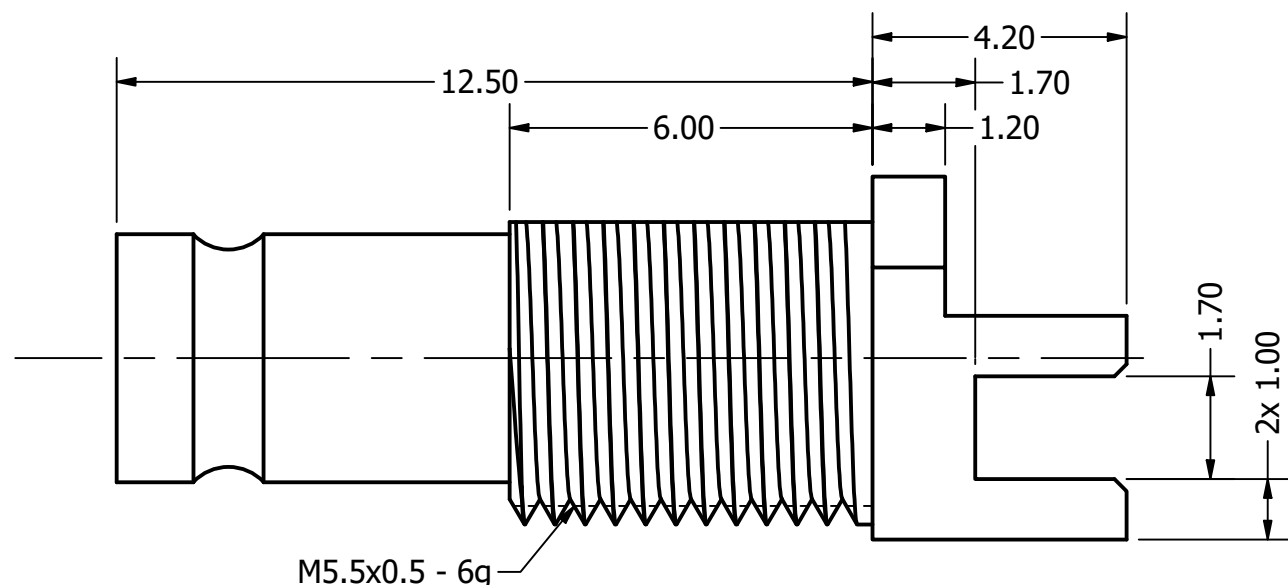
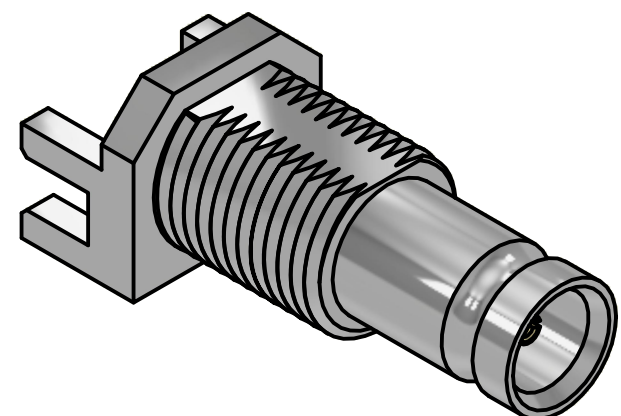


Recommended Panel Cut Out



REVISION HISTORY			
REV	DESCRIPTION	DATE	DESIGNER
3.0	Updated P/N	27 Jun 2024	Peter Millard

Design Right Protected	Material:		Finish:		Gen Tol ±0.10	DO NOT SCALE	
	Designed by P. Fayers		Checked by		©2024	Date 15 Dec 2011	A3
RoHS Compliant	Description: 6GHz 75 ohm 1.0/2.3 Female Bulkhead Edge Mount Nickle Plated Connector for 1.8mm PCB		Part No: XGS-06-EB16-NN Cust		Issue 3.0		Sheet 1 / 2
	This document and all the data contained herein is and shall remain the property of Cambridge Electronic Industries Ltd and may not be used or copied for any purpose whatsoever without the written permission of Cambridge Electronic Industries Ltd.		Unit of Measure: millimeters (mm)				

Electrical:

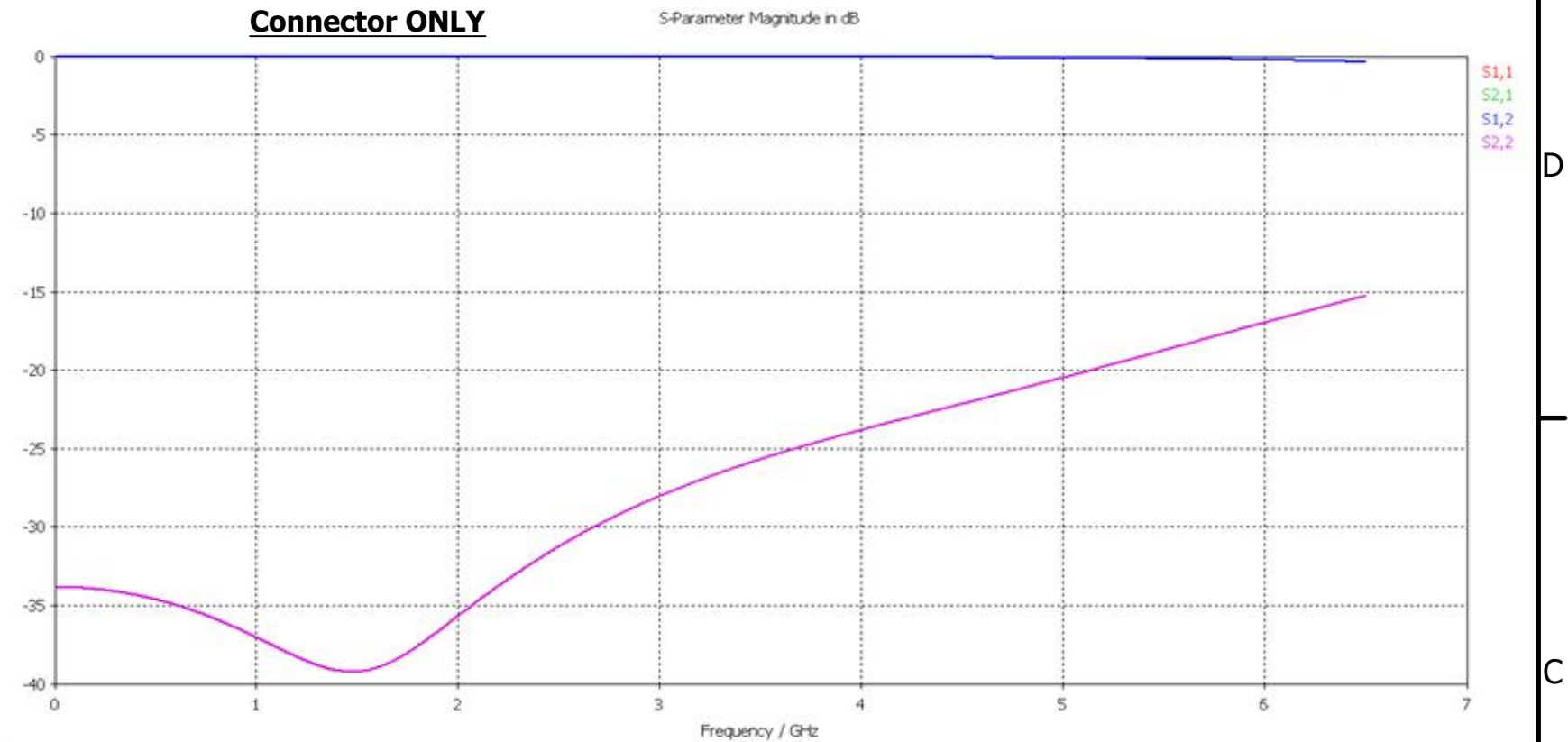
Impedance	75 Ohms
Freq Range	0-6.0 GHz
Working Voltage	250 Vrms
Dielectric withstanding voltage	>750 Vrms
Reflection Factor (VSWR)	1.10 Max 0.0-3.0 GHz 1.32 Max 3.1-6.0 GHz
Contact Resistance	Center Contact 4.0 m Ohm Outer Contact 2.5 m Ohm
Insulation Resistance	> 1000 Meg Ohm

Materials:

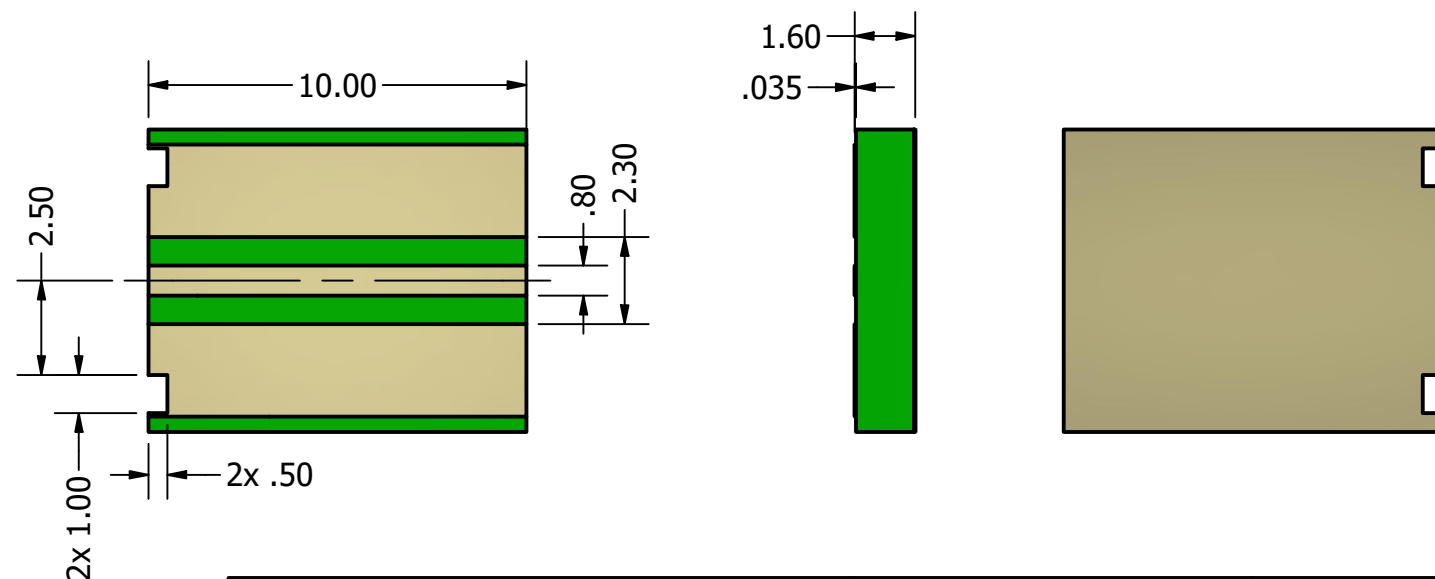
Center Pin	BeCu/10μ Au
Metal Parts	Brass / Ni
Insulators	PTFE

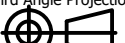

Enviromental:

Temp Ranges:	-65 to +85°C
Mating Cycles:	500
Vibration	MIL-STD202 Method 204 test condition B
Salt Spray	MIL-STD-202 Method 101 test condition B



Suggested PCB layout intended as starting point for design iteration



Design Right Protected	Material:		Finish:		Gen Tol ±0.10	DO NOT SCALE	
						Unit of Measure: millimeters (mm)	
Third Angle Projection 	Designed by <b>P. Fayers</b>	Checked by		Approved by	©2024	Date 15 Dec 2011	<b>A3</b>
RoHS Compliant	 CAMBRIDGE ELECTRONIC INDUSTRIES	This document and all the data contained herein is and shall remain the property of Cambridge Electronic Industries Ltd and may not be used or copied for any purpose whatsoever without the written permission of Cambridge Electronic Industries Ltd.		Description: 6GHz 75 ohm 1.0/2.3 Female Bulkhead Edge Mount Nickle Plated Connector for 1.8mm PCB			
				Part No: XGS-06-EB16-NN Cust		Issue 3.0	Sheet 2 / 2