

## General Description

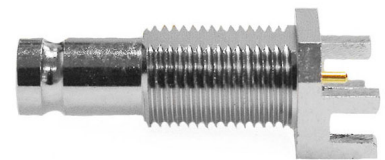
The XGS-06-EB16-NNL is a low profile PCB edge mounted connector which conforms to the standard of SMPTE ST 2081-1, allowing bit-rates of 5.94bit/s over a single coaxial connection. The 8mm pitch of the connector enables high wiring densities and is optimised for use in 6G HD-SDI applications. The connector is for a PCB thickness of 1.6mm and features a longer body.

This connector was formerly sold as:  
C-SX-130N when supplied with ANG-C2-BBN-2.35



## Electrical

Impedance		75Ω
Frequency Range		0-6GHz
Working Voltage		250Vrms
Reflection Factor (VSWR)		1.12 (max) 0-3GHz 1.48 (max) 3-6GHz
Dielectric Withstanding Voltage		750Vrms
Insulation Resistance		≥1000MΩ
Contact Resistance	Centre Contact	≤ 4.0mΩ
	Outer Contact	≤ 2.5mΩ

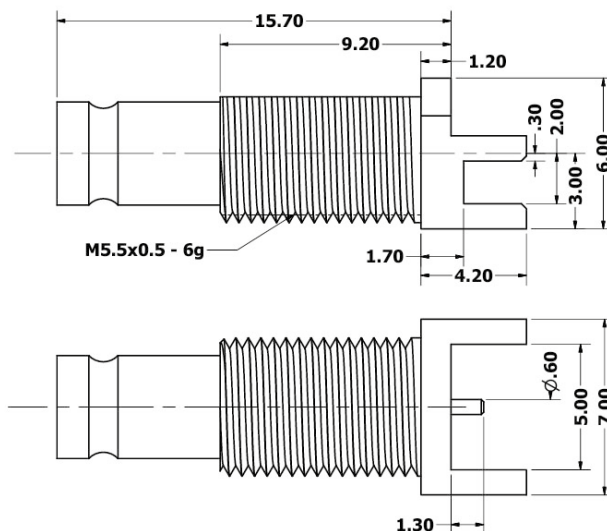
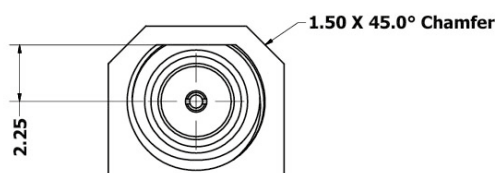


## Materials

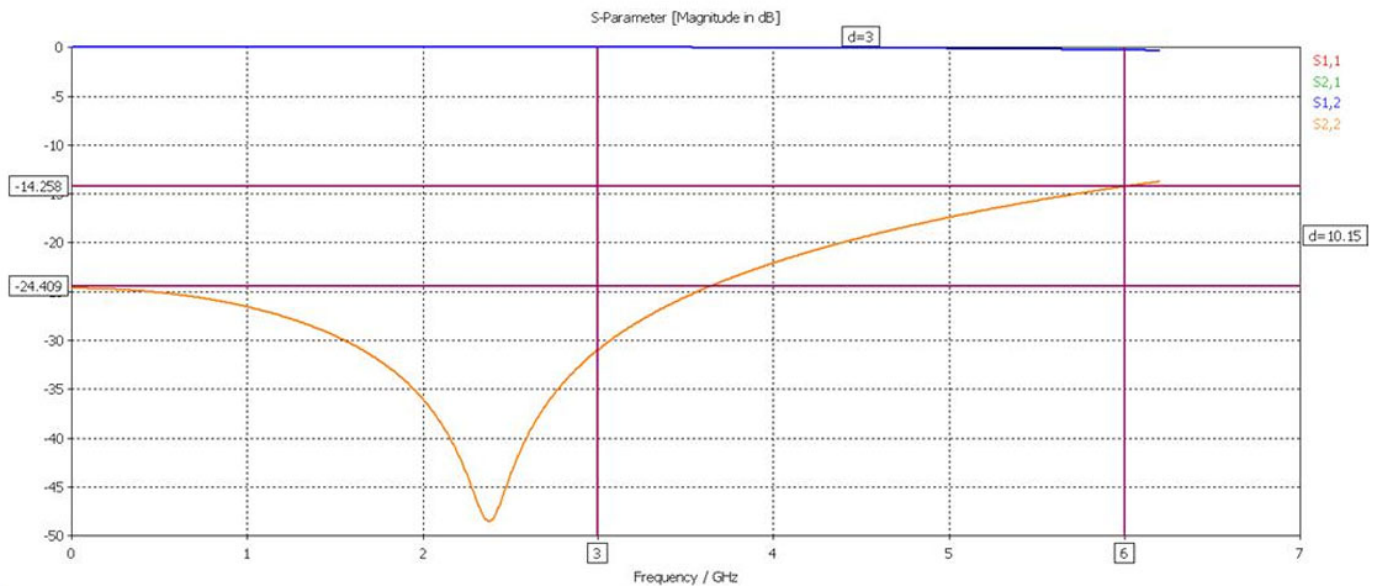
Centre Pin	BeCu / 10 μ"Au
Metal Parts	Brass/Au
Insulators	PTFE

## Environmental

Connector Type	DIN 1.0/2.3 Female
Temp Range	-65 to +85°C
Mating Cycles	500



## Return Loss Graph



## PCB Layout

