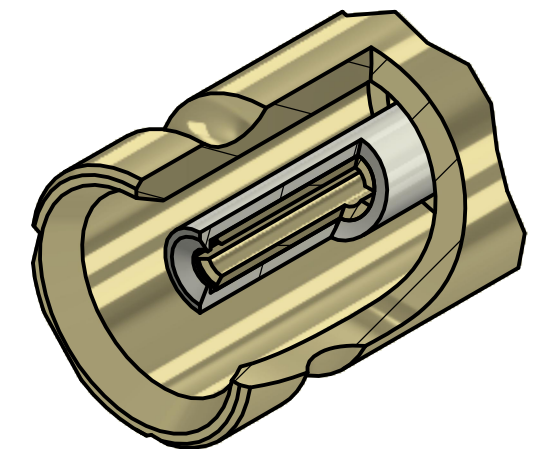


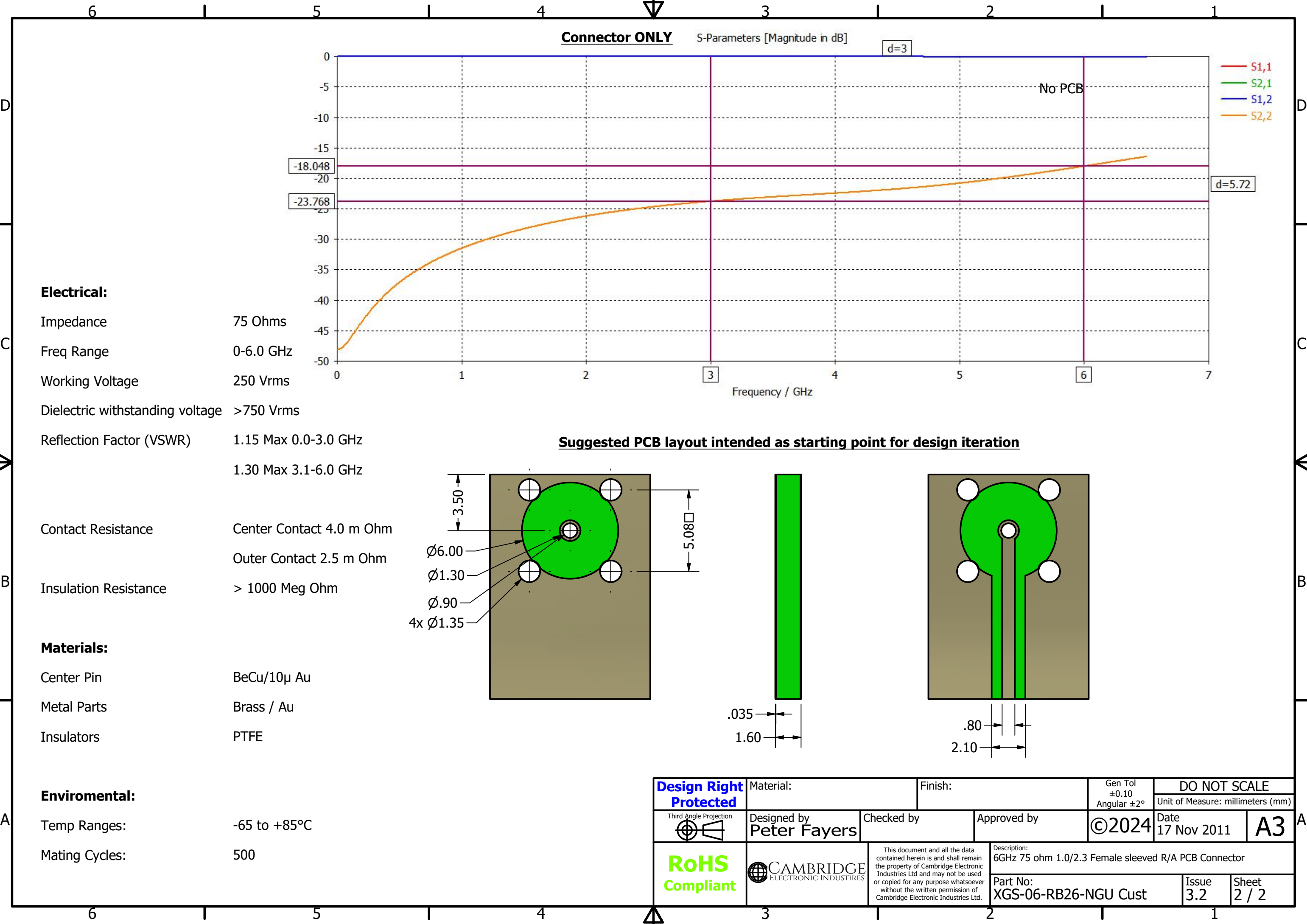
Recommended Panel Cut Out



**DETAIL B
SCALE 10 : 1**

| REVISION HISTORY | | | | |
|------------------|--------------------------|-----------|-------------|---------------|
| REV | DESCRIPTION | CHG REF | DATE | DESIGNER |
| 3.0 | Updated P/N | FB / INT | 08 Jul 2024 | Peter Millard |
| 3.1 | Updated Insulator & Body | FB / INT | 13 Aug 2024 | Peter Millard |
| 3.2 | Updated Contact | FB / SUPP | 12 Nov 2024 | Peter Millard |

| | | | | | | | |
|-----------------------------------|---|--|------------------------------------|--|---------------------|-----------------------------------|----------------|
| Design Right Protected | Material: | | Finish: | | Gen Tol ±0.10 | DO NOT SCALE | |
| | Designed by Peter Fayers | | Checked by | | Angular ±2° | Unit of Measure: millimeters (mm) | |
| Third Angle Projection | Approved by | | ©2024 | | Date 17 Nov 2011 | A3 | |
| RoHS Compliant | Description: 6GHz 75 ohm 1.0/2.3 Female sleeved R/A PCB Connector | | Part No: XGS-06-RB26-NGU Cust | | Issue 3.2 | | Sheet 1 / 2 |
| | This document and all the data contained herein is and shall remain the property of Cambridge Electronic Industries Ltd and may not be used or copied for any purpose whatsoever without the written permission of Cambridge Electronic Industries Ltd. | | CAMBRIDGE ELECTRONIC INDUSTRIES | | | | |



Connector ONLY

S-Parameters [Magnitude in dB]

d=3

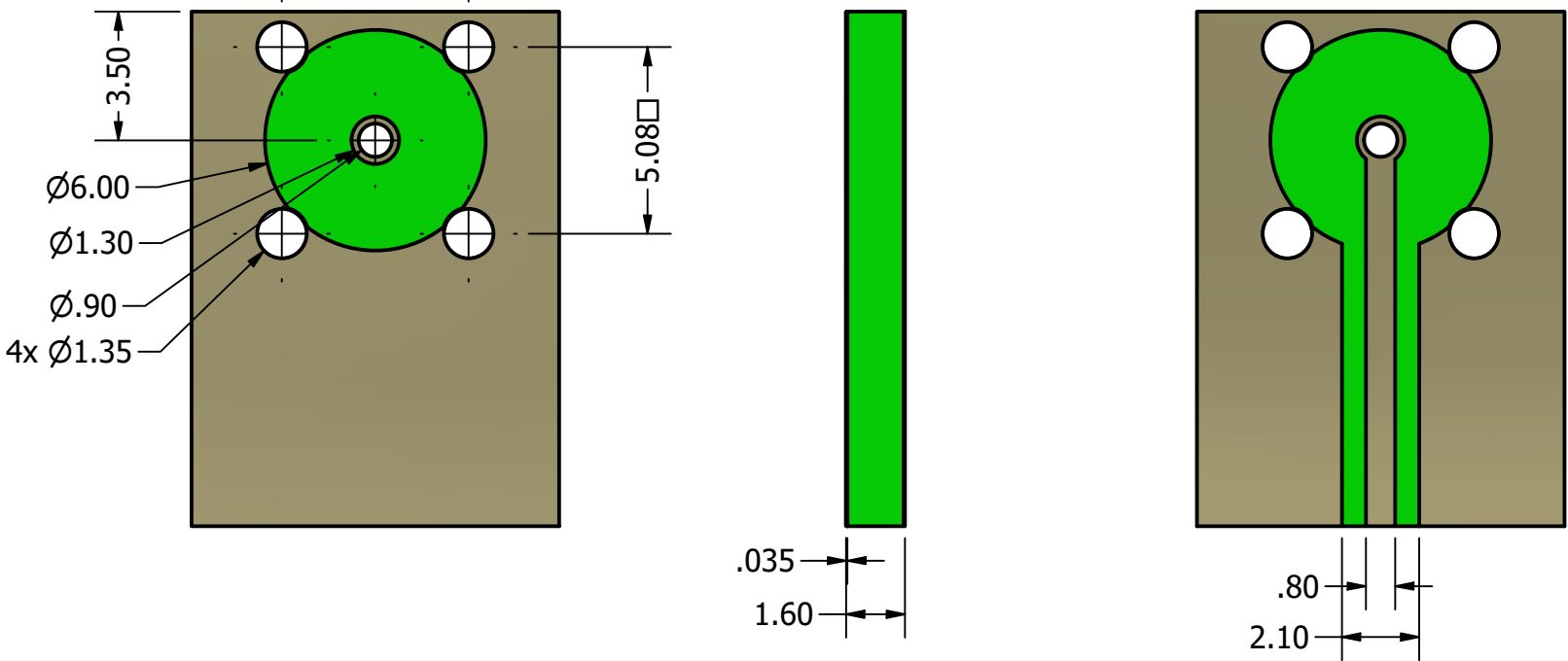
No PCB

S1,1
S2,1
S1,2
S2,2

d=5.72

Frequency / GHz

Suggested PCB layout intended as starting point for design iteration



Design Right Protected

Material:

Finish:

Gen Tol
±0.10
Angular ±2°

DO NOT SCALE

Unit of Measure: millimeters (mm)



Designed by
Peter Fayers

Checked by

Approved by

©2024

Date
17 Nov 2011

A3

RoHS Compliant



This document and all the data contained herein is and shall remain the property of Cambridge Electronic Industries Ltd and may not be used or copied for any purpose whatsoever without the written permission of Cambridge Electronic Industries Ltd.

Description:
6GHz 75 ohm 1.0/2.3 Female sleeved R/A PCB Connector

Part No:
XGS-06-RB26-NGU Cust

Issue
3.2

Sheet
2 / 2