

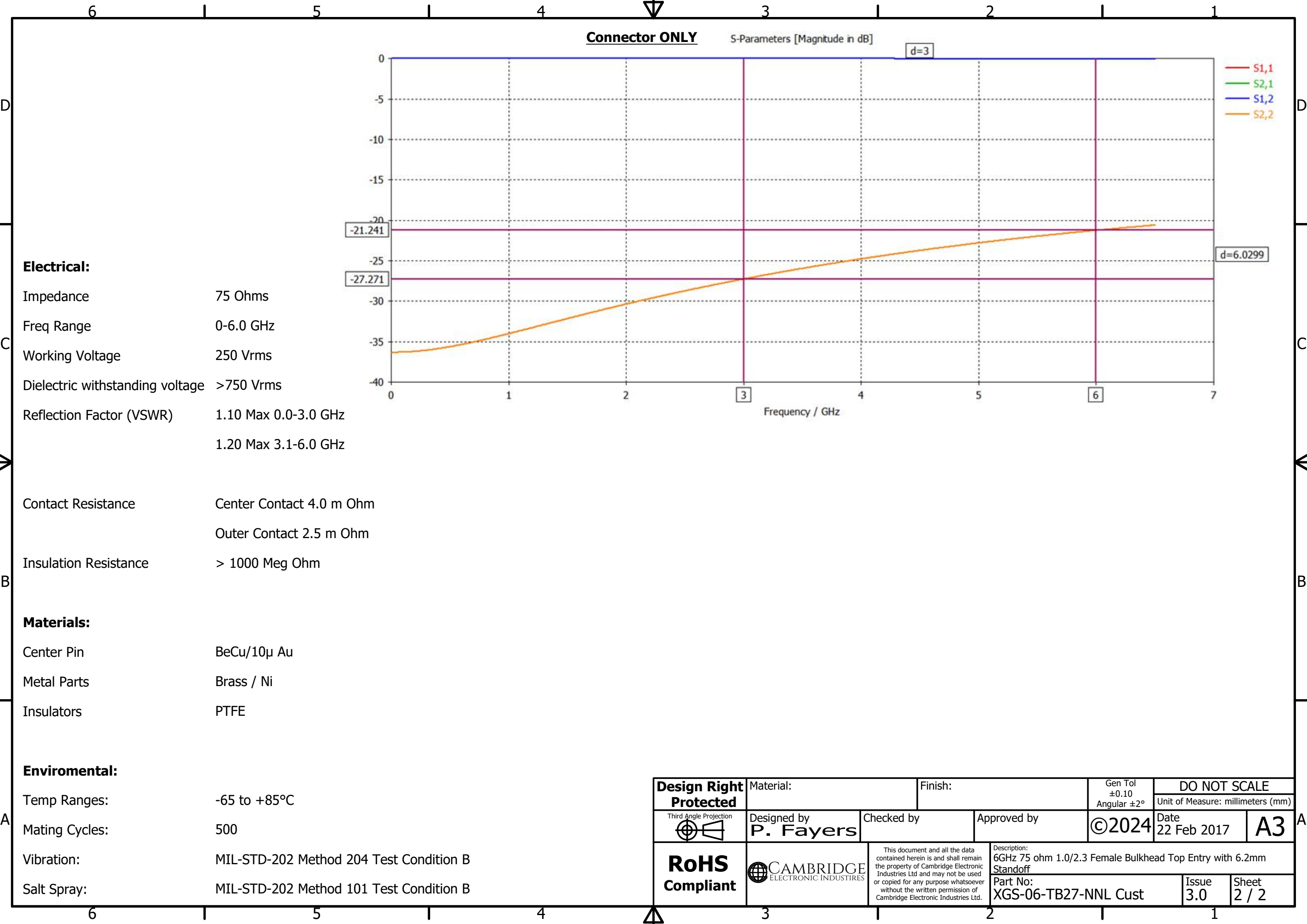


Recommended Panel Cut Out

Design Right Protected	Material:		Finish:		Gen Tol ±0.10 Angular ±2°	DO NOT SCALE		
	Third Angle Projection 		Designed by P. Fayers	Checked by	Approved by	©2024	Date 22 Feb 2017	A3
RoHS Compliant			This document and all the data contained herein is and shall remain the property of Cambridge Electronic Industries Ltd and may not be used or copied for any purpose whatsoever without the written permission of Cambridge Electronic Industries Ltd.		Description: 6GHz 75 ohm 1.0/2.3 Female Bulkhead Top Entry with 6.2mm <u>Standoff</u>			
					Part No: XGS-06-TB27-NNL Cust		Issue 3.0	Sheet 1 / 2



D

C

B

A

D

C

B

A