

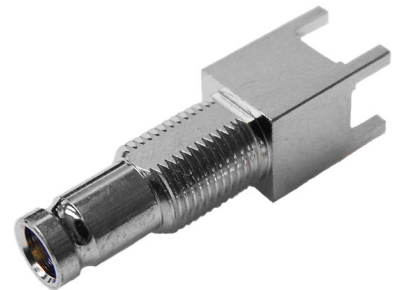
General Description

The XGS-06-TB27-NNLU is a top entry PCB bulkhead mounted connector with a protective sleeve over the contact which conforms to the standard of SMPTE ST 2081-1, allowing bit-rates of 5.94Gbit/s over a single coaxial connection. The 8mm pitch of the connector enables double wiring densities and is optimised for use in 6G HD-SDI applications. The connector has a leg length of 2.7mm with a longer body and bulkhead section for panel mounting.



Electrical

Impedance	75Ω	
Frequency Range	0-6GHz	
Working Voltage	250Vrms	
Reflection Factor (VSWR)	1.3 (max) 0-3GHz 1.58 (max) 3-6GHz	
Dielectric Withstanding Voltage	750Vrms	
Insulation Resistance	≥1000MΩ	
Contact Resistance	Centre Contact	≤ 4.0mΩ
	Outer Contact	≤ 2.5mΩ

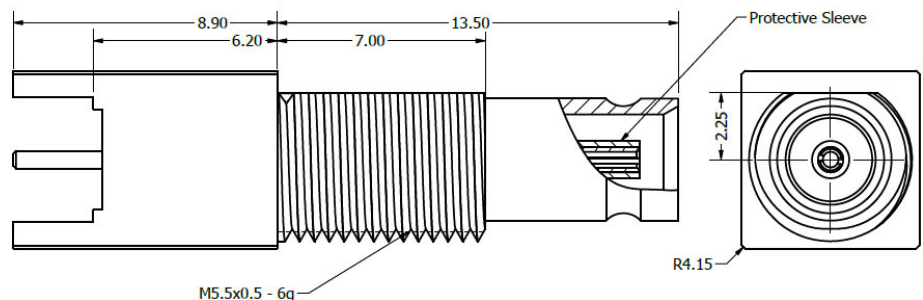
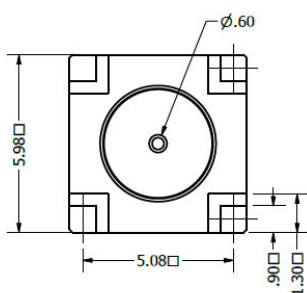


Materials

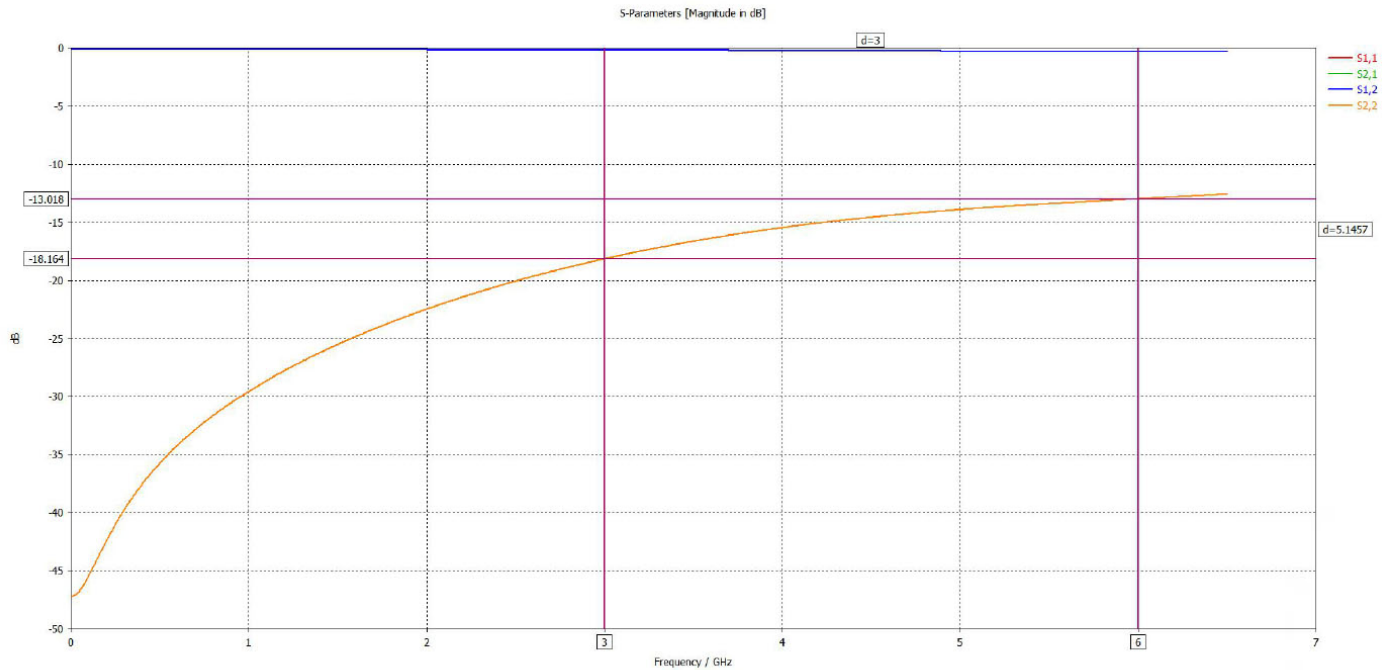
Centre Pin	BeCu / 10 μ"Au
Metal Parts	Brass/Ni
Insulators	PTFE

Environmental

Connector Type	DIN 1.0/2.3 Female
Temp Range	-65 to +85°C
Mating Cycles	500



Return Loss Graph



PCB Layout

