

# 12GHz MCX PCB Connectors

## MCX PCB Edge Mounted 2 way Socket for 12G Applications

### Part Number XJT-A011-GGAY

#### Issue 1.0

#### General Description

Our range of 12GHz Precision MCX coaxial connectors are optimised for 4K/Quad HD and Ultra HD Broadcast applications and have been developed under the CoaxVision™ Brand name, while complying with the electrical specifications of CXP-12. These high performance connectors allow you to achieve a 12GHz channel in one single connection.

The MCX connectors are mateable with any standard 75Ω MCX connector, but optimum performance is achieved when PCB mounted styles are interfaced with Cambridge Electronics 12GHz MCX plugs.

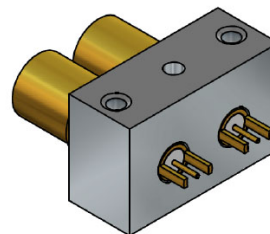
The XJT-A011-GGAY connector is a dual edge mounted socket, designed for use up to 12GHz.

#### Electrical Specification

Impedance:	75Ω
Frequency Range:	0-12GHz
Working Voltage:	335Vrms
Dielectric Withstanding Voltage:	750Vrms
Contact Resistance:	
Centre Contact	≤ 5mΩ
Outer Contact	≤ 10mΩ
Insulation Resistance:	≥ 1GΩ
Connector Type:	Female

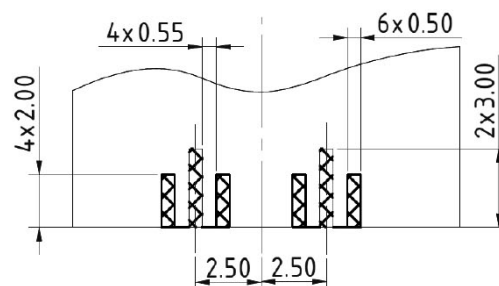
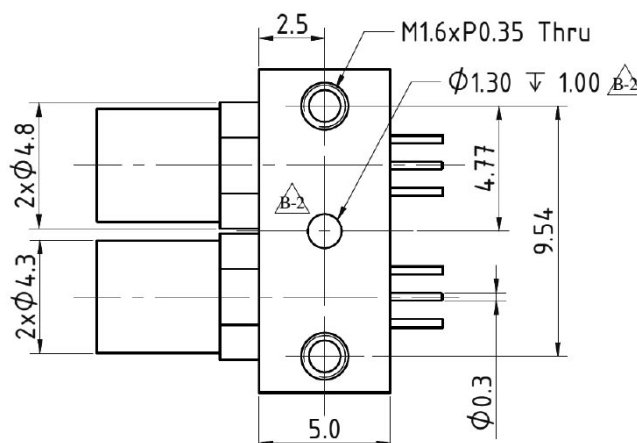
#### Features

- Precision 12GHz 75Ω MCX range
- Edge Mounted Dual Socket connector
- 12G-SDI Compatible
- Suitable for use in CXP-12 applications

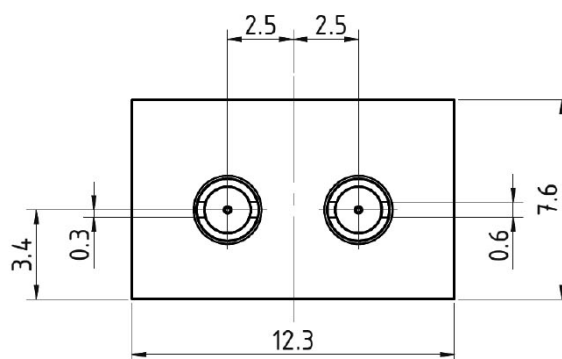
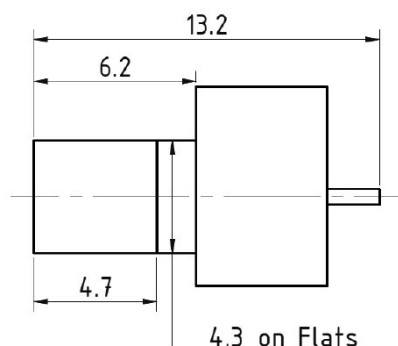


#### Mechanical

Mating:	Snap on coupling
Connector Durability:	≥ 500 cycles
Engagement Force:	≤ 3.4lbs
Disengagement Force:	1.4~3.4lbs
Cable Retention Force:	≥ 12.1lbs
Materials	
Centre Pin:	BeCu/ Ni / Au
Metal Parts:	Brass / Ni / Au
Insulators:	PTFE
Environmental Temp Range:	-65 to +165°C



Recommended PCB Soldering Pattern



Drawing Issue 1.0



**CAMBRIDGE**  
ELECTRONIC INDUSTRIES

Tel: +44 (0)1223 860041

Tel: +44 (0)1223 863377

Email: [sales@cambridgeelectronics.com](mailto:sales@cambridgeelectronics.com)