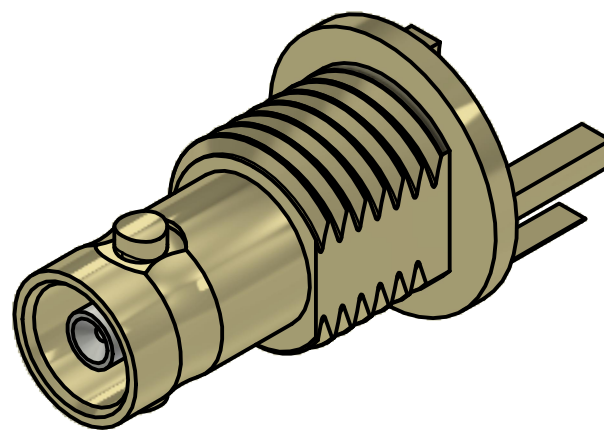
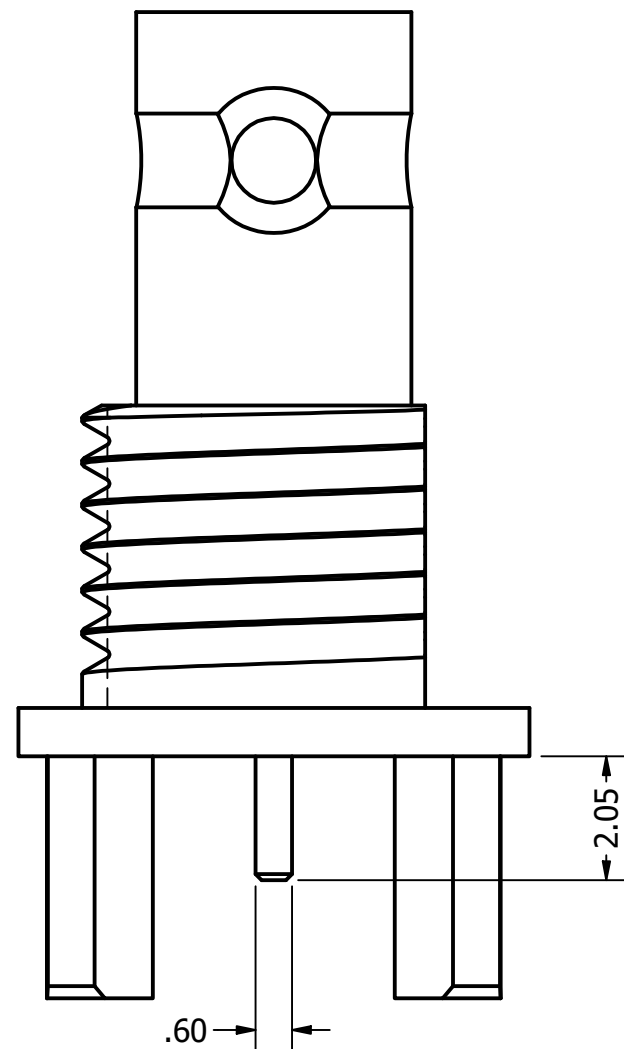


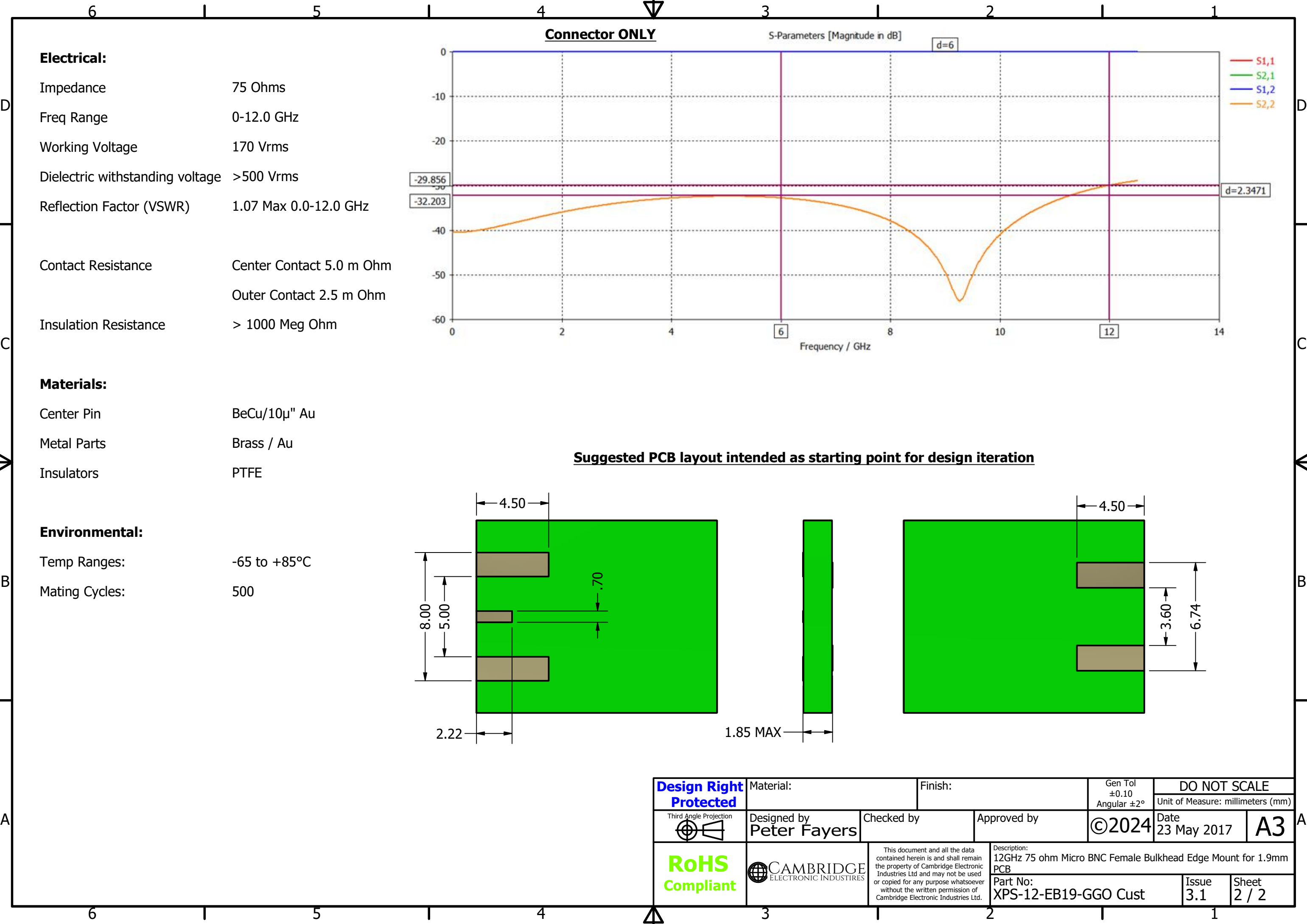




Recommended Panel Cut Out



REVISION HISTORY				
REV	DESCRIPTION	CHG REF	DATE	DESIGNER
3.0	Updated P/N	FB / INT	03 Sep 2024	Peter Millard
3.1	Updated contact forming	FB / SUPP	16 Jan 2025	Peter Millard

Design Right Protected	Material:		Finish:		Gen Tol ±0.10 Angular ±2°		DO NOT SCALE		
							Unit of Measure: millimeters (mm)		
Third Angle Projection 	Designed by Peter Fayers		Checked by		Approved by		©2024	Date 23 May 2017	A3
RoHS Compliant			This document and all the data contained herein is and shall remain the property of Cambridge Electronic Industries Ltd and may not be used or copied for any purpose whatsoever without the written permission of Cambridge Electronic Industries Ltd.		Description: 12GHz 75 ohm Micro BNC Female Bulkhead Edge Mount for 1.9mm PCB				
					Part No: XPS-12-EB19-GGO Cust				
					Issue 3.1		Sheet 1 / 2		



Design Right Protected	Material:		Finish:		Gen Tol ±0.10 Angular ±2°	DO NOT SCALE	
						Unit of Measure: millimeters (mm)	
Third Angle Projection 	Designed by Peter Fayers	Checked by		Approved by	©2024	Date 23 May 2017	A3
RoHS Compliant	 CAMBRIDGE ELECTRONIC INDUSTRIES	This document and all the data contained herein is and shall remain the property of Cambridge Electronic Industries Ltd and may not be used or copied for any purpose whatsoever without the written permission of Cambridge Electronic Industries Ltd.		Description: 12GHz 75 ohm Micro BNC Female Bulkhead Edge Mount for 1.9mm PCB			
				Part No: XPS-12-EB19-GGO Cust		Issue 3.1	Sheet 2 / 2