

General Description

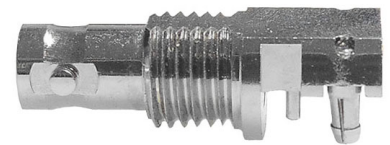
With a light weight construction and flat top surface this 12 GHz surface mount Micro BNC Coaxial Connector is specifically designed to aid automated placement techniques universally adopted in volume production processes. This End Launch Surface Mounting Micro BNC connector from Cambridge Electronic Industries facilitates transmission rates over a single channel of up to 12 Gbits/s thus permitting significantly increased wiring densities. The XPS-12-EL16-NNHP is for 1.6mm PCB thicknesses. The connector is also available in a tape and reel format of 650 pieces as the XPS-12-EL16-NNEHP.



This connector was formerly sold as:
C-SX-200 when supplied with ANP-C2-CBN-1.60

Electrical

Impedance		75Ω
Frequency Range		0-12GHz
Working Voltage		170Vrms
Reflection Factor (VSWR)		1.05 (max) 0-6GHz 1.09 (max) 6-12GHz
Dielectric Withstanding Voltage		500Vrms
Insulation Resistance		≥1000MΩ
Contact Resistance	Centre Contact	≤ 5.0mΩ
	Outer Contact	≤ 2.5mΩ

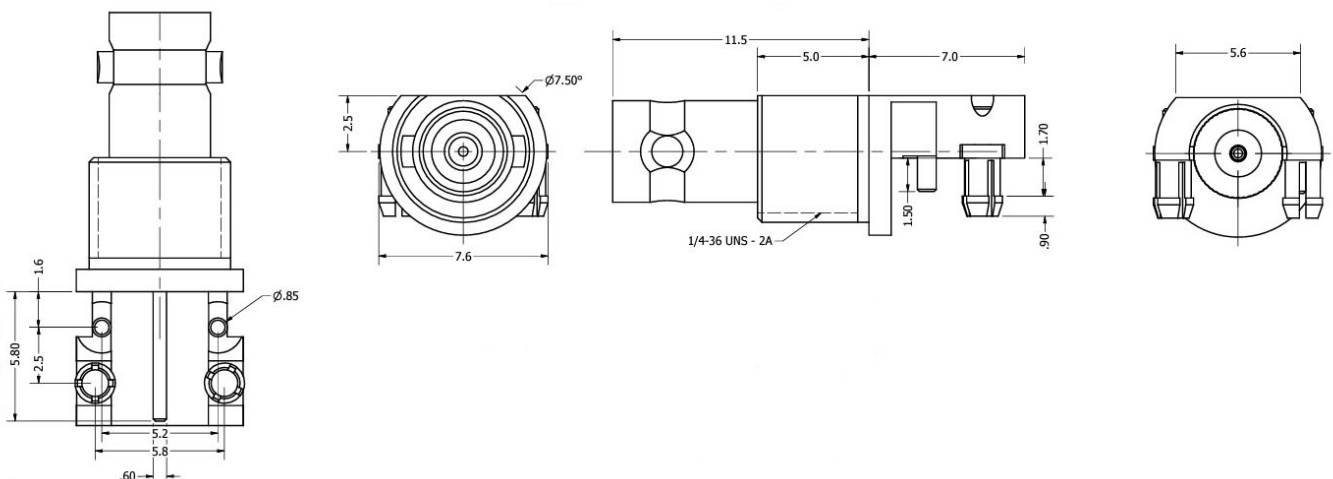


Materials

Centre Pin	BeCu / 10 μ"Au
Metal Parts	Brass/Au
Insulators	PTFE

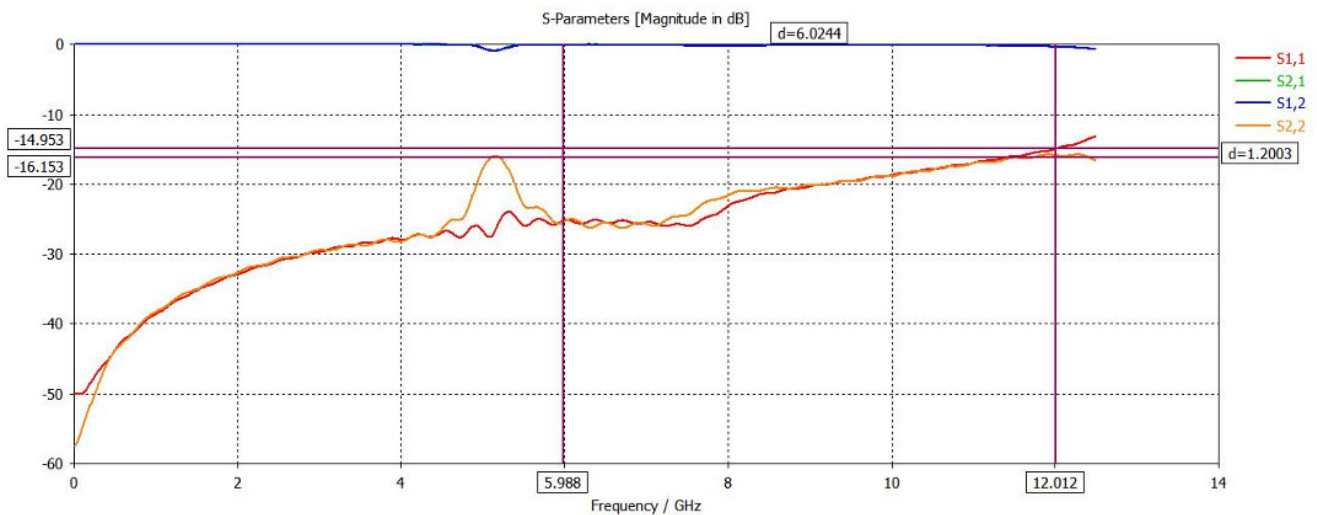
Environmental

Connector Type	Micro BNC Female
Temp Range	-65 to +85°C
Mating Cycles	500



Return Loss Graph

Connector Including PCB Element



PCB Layout

