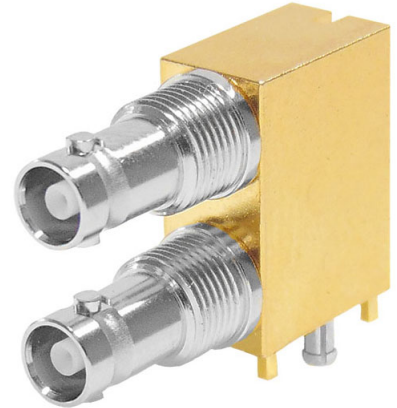


## General Description

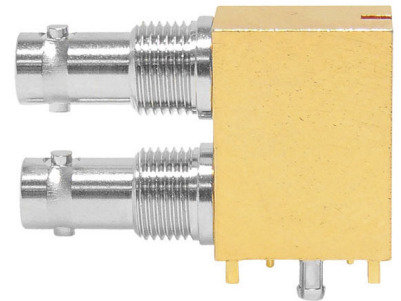
The design of this dual port connector allows for optimum signal integrity at 12GHz and complies to the 4K/Quad HD and Ultra HD broadcast standard as well as the J11A CXP-12 CoaXPress specification.

The XPS-12-RB15-GNDHP features harpoons to assist with placement of the connector on the PCB, but contacts and ground pins of a shorter length, that are housed within the board (sub-terrain), which reduces the possibility for the signal to create either an antenna or crosstalk to other components on the board at the higher frequency range.



## Electrical

Impedance		75Ω
Frequency Range		0-12GHz
Working Voltage		250Vrms
Reflection Factor (VSWR)		1.3 (max) 0-12GHz
Dielectric Withstanding Voltage		750Vrms
Insulation Resistance		≥1000MΩ
Contact Resistance	Centre Contact	≤ 4.0mΩ
	Outer Contact	≤ 2.5mΩ

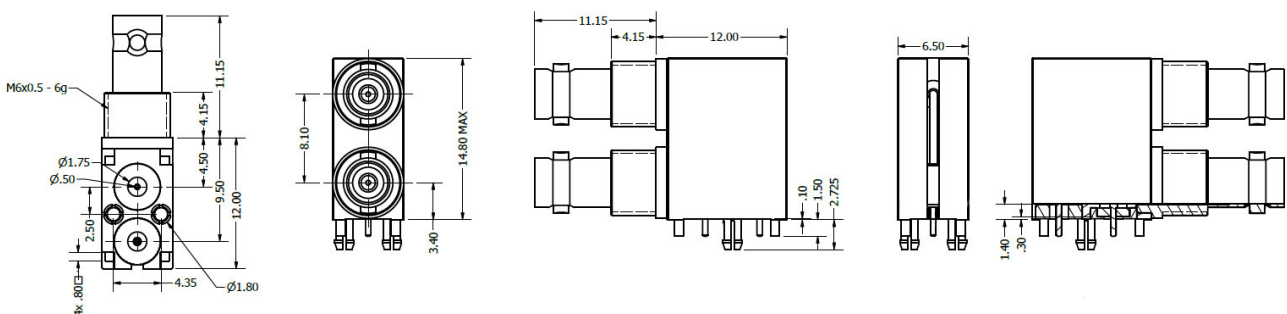


## Materials

Centre Pin	BeCu / 10 μ" Au
Metal Parts	Brass/Au/Ni
Insulators	PTFE

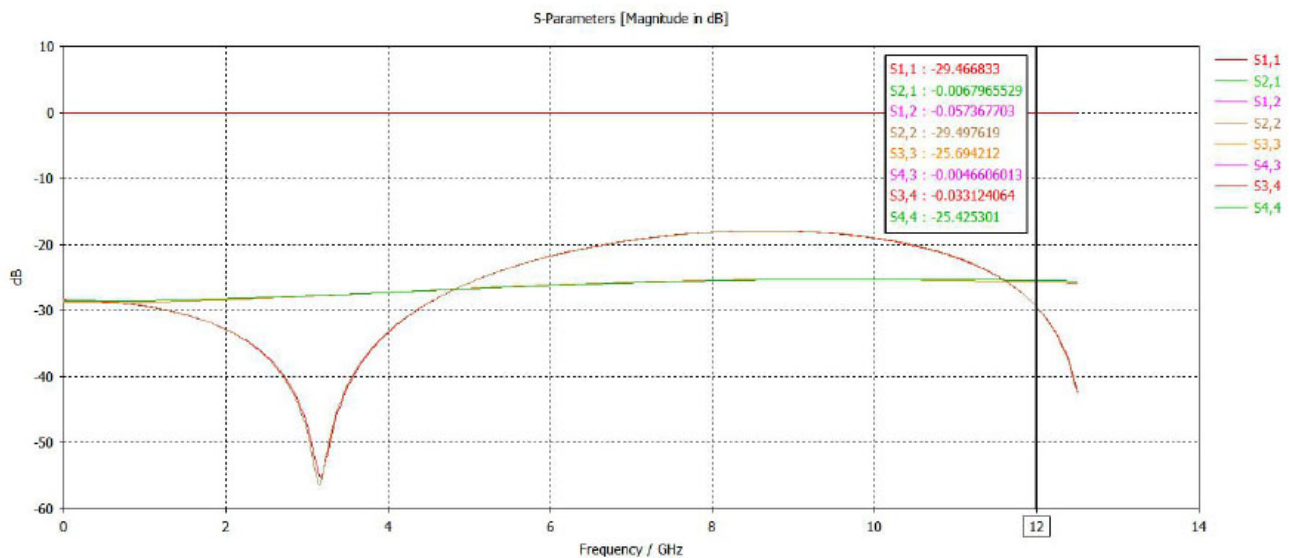
## Environmental

Connector Type	Micro BNC Female
Temp Range	-65 to +85°C
Mating Cycles	500



## Return Loss Graph

### RL Graph Connector Only



## PCB Layout

