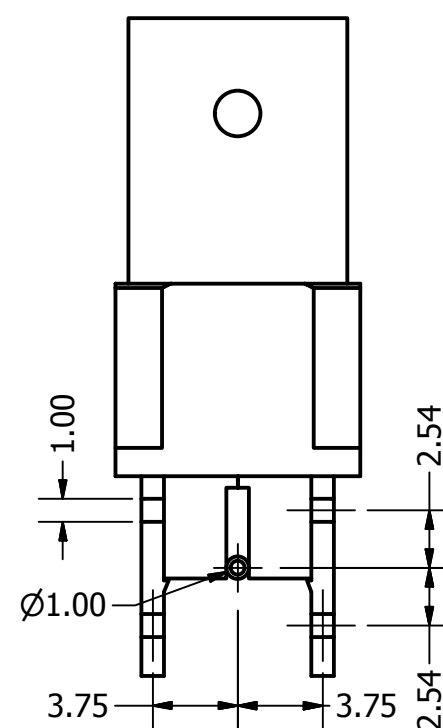
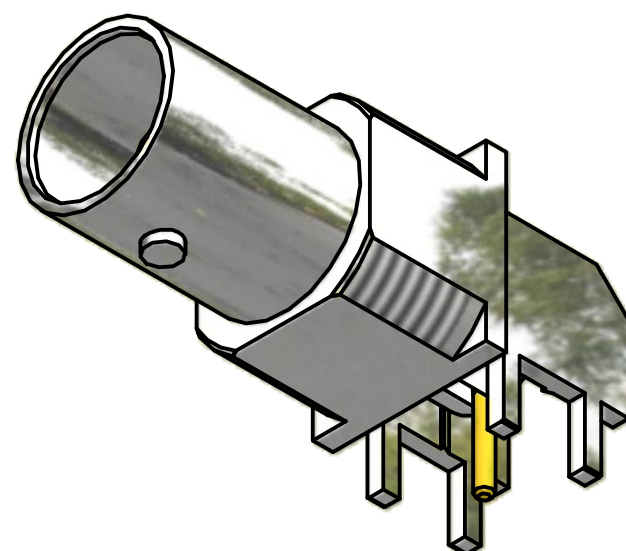
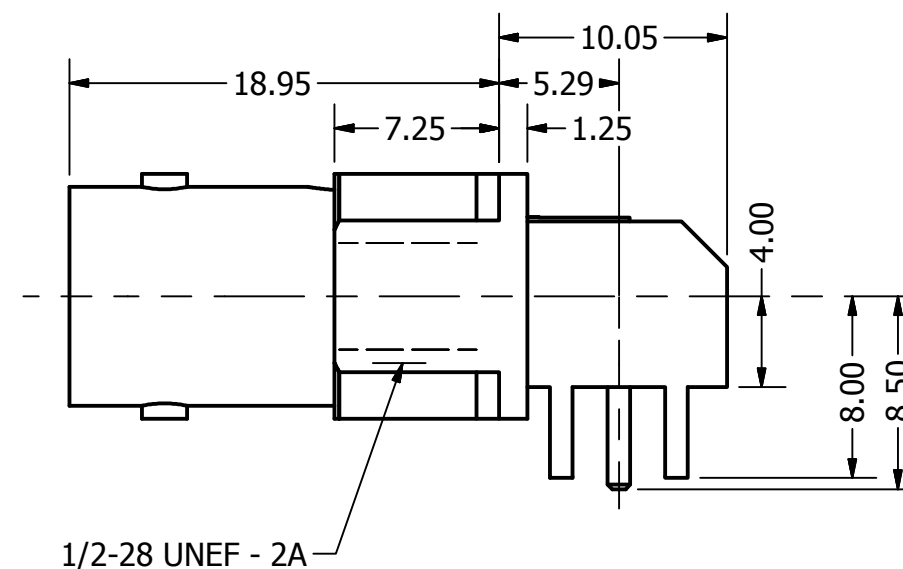
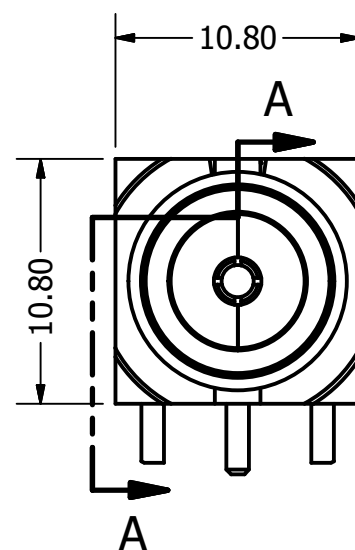
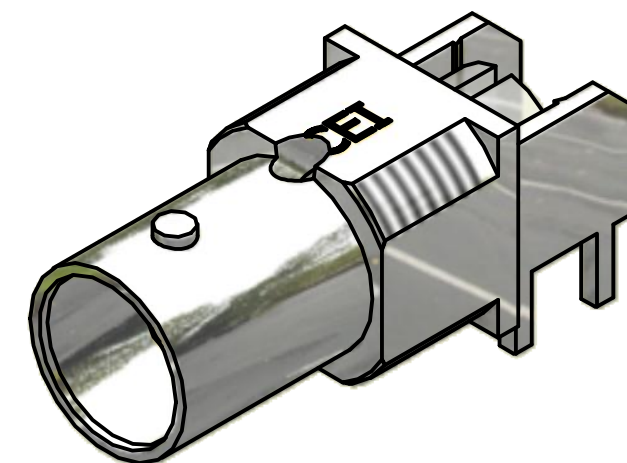


SECTION A-A  
SCALE 3 : 1



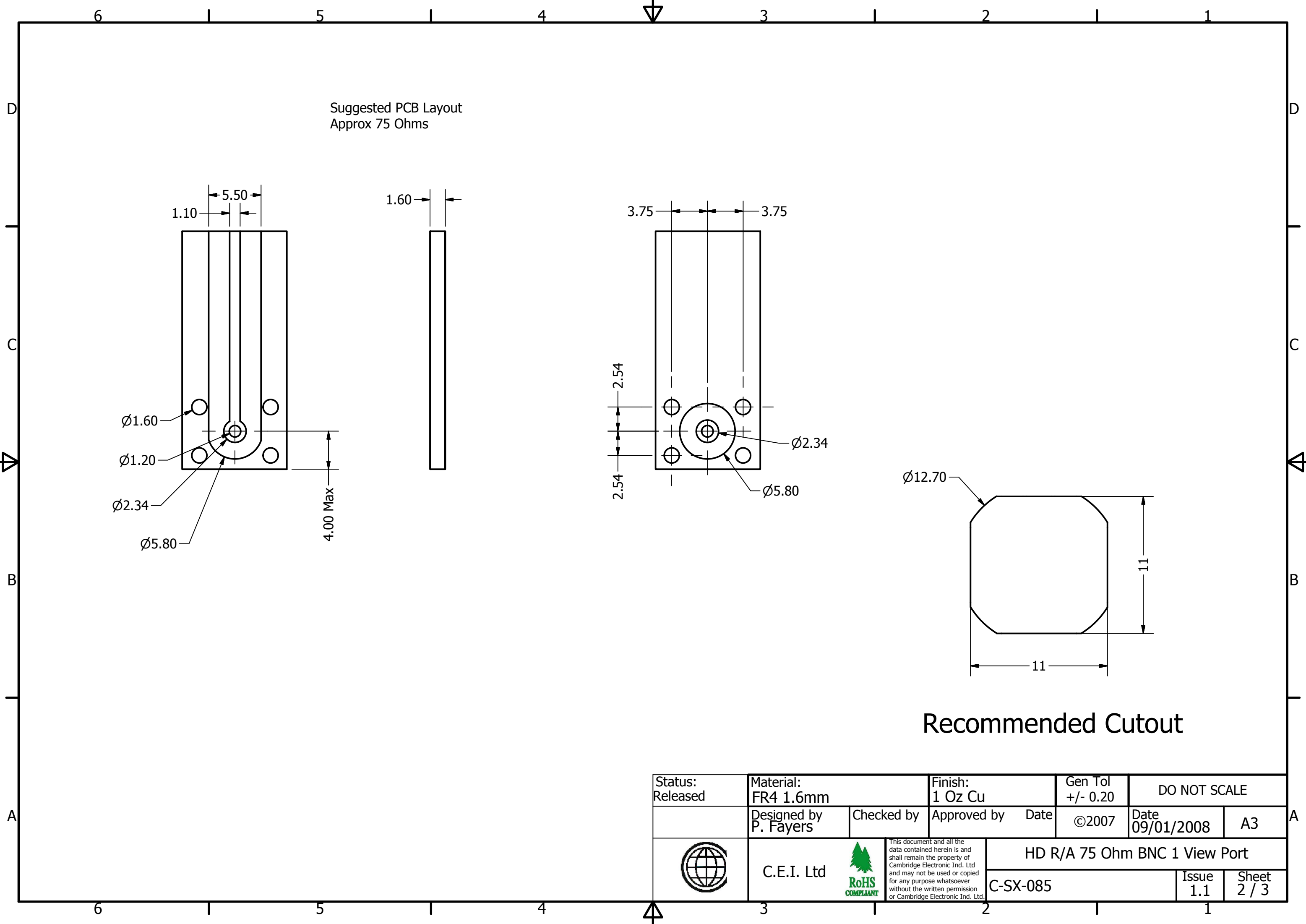
**Not** Supplied with  
Shakeproof Washer  
and Hex Nut.



REVISION HISTORY			
REV	DESCRIPTION	DATE	APPROVED
1.0	Origin	09/03/2009	PF
1.1	Electrical Spec Added	03/06/2009	P. Fayers



Status: Released	Material:	Finish:	Gen Tol +/- 0.20	DO NOT SCALE		
	Designed by P. Fayers	Checked by	Approved by	Date	©2007	
	C.E.I. Ltd		HD R/A 75 Ohm BNC 1 View Port			
			C-SX-085		Issue 1.1	Sheet 1 / 3

This document and all the  
data contained herein is and  
shall remain the property of  
Cambridge Electronic Ind. Ltd  
and may not be used or copied  
for any purpose whatsoever  
without the written permission  
of Cambridge Electronic Ind. Ltd.



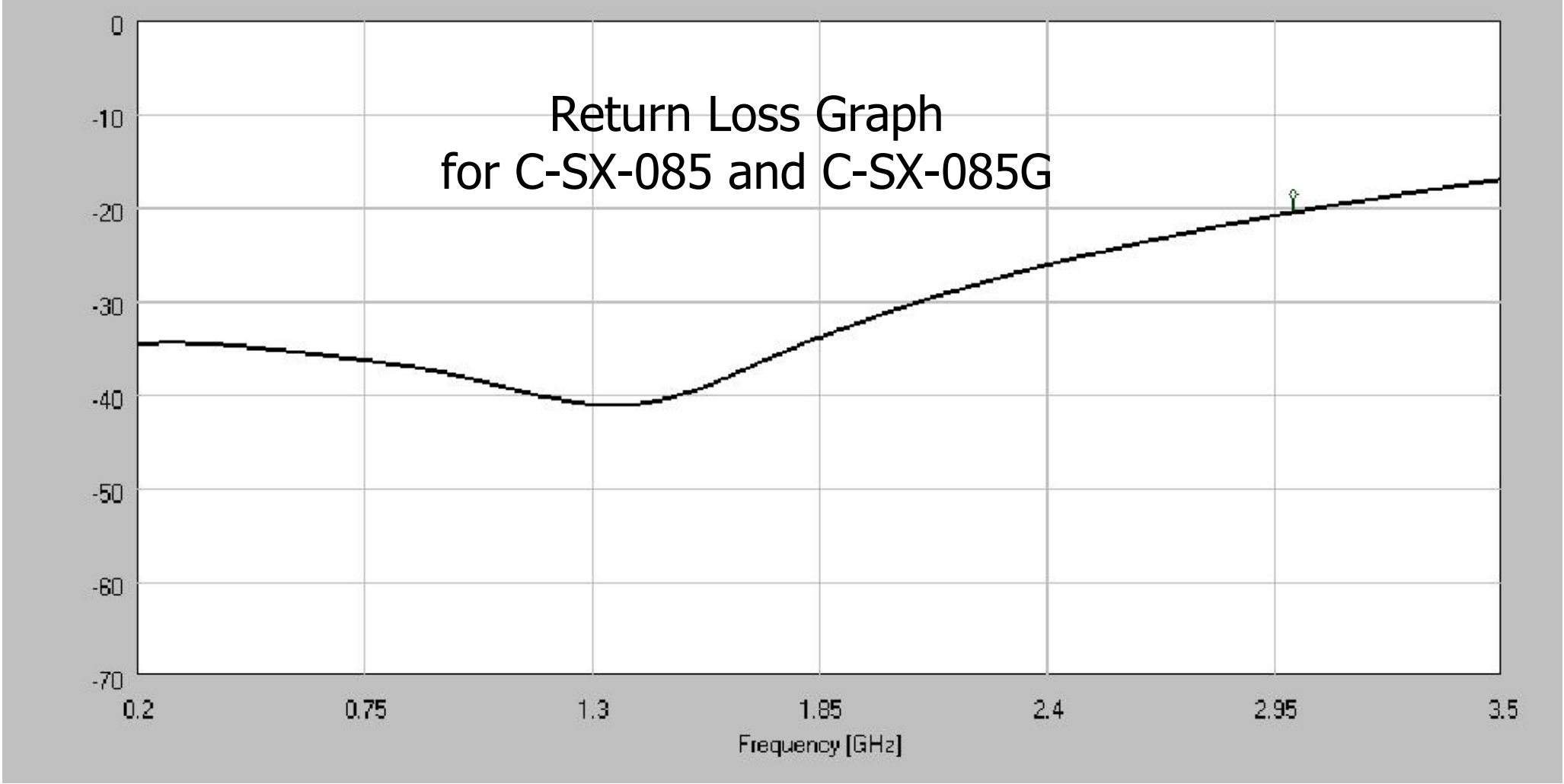
Suggested PCB Layout  
Approx 75 Ohms



### Recommended Cutout

Status: Released	Material: FR4 1.6mm		Finish: 1 Oz Cu		Gen Tol +/- 0.20		DO NOT SCALE				
	Designed by P. Fayers	Checked by	Approved by      Date		©2007		Date 09/01/2008		A3		
	<div>C.E.I. Ltd</div> <div></div>		<div>This document and all the data contained herein is and shall remain the property of Cambridge Electronic Ind. Ltd and may not be used or copied for any purpose whatsoever without the written permission or Cambridge Electronic Ind. Ltd.</div>		HD R/A 75 Ohm BNC 1 View Port						
					C-SX-085					Issue 1.1	

Electrical Specification

<b>Electrical:</b>	
Impedance	75 Ohms
Freq Range	0-3.0GHz
Working Voltage	500 Vrms
Dielectric withstanding voltage	1500 Vrms
Reflection Factor (VSWR)	1.12 Max DC-1.5GHz
	1.22 Max 1.5GHz-3.0GHz
Contact Resistance	Centre Contact 1.5 m Ohm
	Outer Contact 1.0m Ohm
Insulation Resistance	> 5000 Meg Ohm
<b>Materials:</b>	
Centre Pin	Phosphor Bronze /10u" Au
Metal Parts	Die Cast Zinc/Ni
Insulators	TPX



Status: Released	Material:		Finish:		Gen Tol +/- 0.20	DO NOT SCALE	
	Designed by P. Fayers	Checked by	Approved by      Date		©2007	Date 09/01/2008	A3
	C.E.I. Ltd		This document and all the data contained herein is and shall remain the property of Cambridge Electronic Ind. Ltd and may not be used or copied for any purpose whatsoever without the written permission of Cambridge Electronic Ind. Ltd.	HD R/A 75 Ohm BNC 1 View Port			
				C-SX-085		Issue 1.1	Sheet 3 / 3