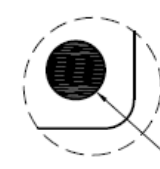
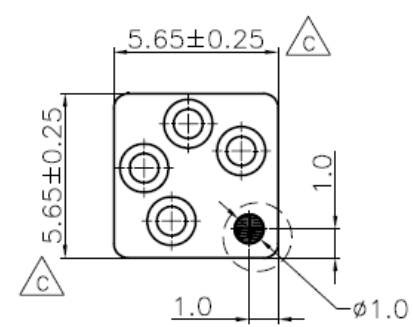


Section A-A

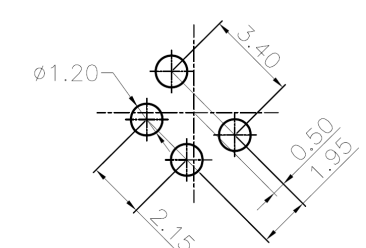
Specifications:
Current Rating: 4.0A
Voltage Rating: 250V AC
Contact Resistance: 30m Ohm Max
Insulation Resistance: 100M Ohm Min
Withstanding Voltage: 750V AC for one Minute
Temperature Range: -40°C ~ +85°C

CC08-04S-A-PB15-TR
Tape & Reel
Gold Plated 15u"
PCB Dip
A-Coding
Socket
No. of Positions
M8



Print White Identification
Marker for Soldering

Detail "B"
Scale 2:1



Recommended P.C.B. Layout

Materials and Finish:
Insulator: Ny66 UL94V-0
Insulator Color: Black
Contact: Phosphor Bronze
Contact Plating: Gold Plated 15u" In Mating Area

Note:
No sink marks on exterior faces
Flashes 0.15mm max
Draft no stated:1'
Radii not stated:0.15mm
Parts must be cleaned and free of grease, oil, dirt and damages

REVISION HISTORY				
REV	DESCRIPTION	CHG REF	DATE	DESIGNER
1.0	Origin	-	21 08 2023	Owen Page

DO NOT SCALE
Unit of Measure: millimetres (mm)



Designed by
Owen Page

X.X - +0.20
X.XX - +0.15

Design Right
Protected

©2023

Date
21 08 2023

A4

RoHS
Compliant

Cambridge
Electronic
Industries Ltd

This document and all the data
contained herein is and shall remain
the property of Cambridge Electronic
Industries Ltd and may not be used
or copied for any purpose
whatsoever without the written
permission of Cambridge Electronic
Industries Ltd.

Description:
M8 Receptacle 4 Pos Straight PCB Mount

Part No:
CC08-04S-A-PB15-TR

Issue
1.0

Sheet
1 / 1