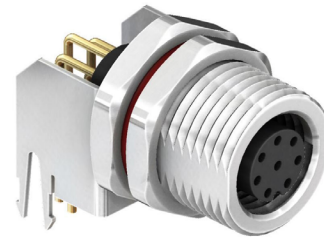


### General Description

The CC08R-XXS-FX-PBS is a M8 front fastening panel socket with right angle pins for mounting directly on a PCB. This circular connector is available in A and B coding, with the option of a 2 to 8 way pin assignment with shielding. The M8 is the best connector type for industrial sensors, due to its robust and secure format coupled with the waterproof rating of IP67.









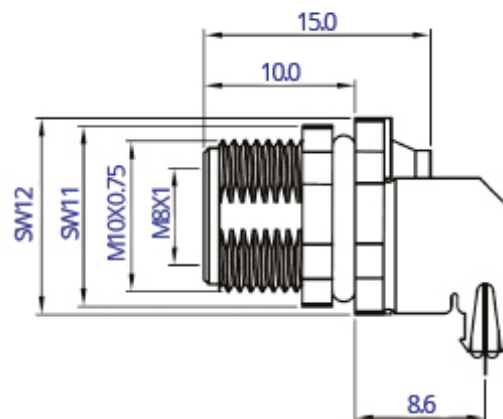
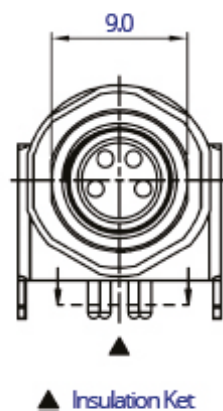
Specification	
Coding	A or B
Contact	2 to 8 Pins
Current Rating	3A AC/DC (2 to 5 Pins) 1A AC/DC (6 to 8 Pins)
Voltage Rating	60V AC/DC (2 to 3Pins) 30V AC/DC (4 to 8Pins)
Contact Resistance	≤10mΩ
Insulation Resistance	≥100MΩ
Withstanding Voltage	500V AC/Minute (2 to 5 Pins) 250V AC/Minute (6 to 8 Pins)
Operating Temperature	-25°C to +80°C
Waterproof Rating	IP67
Material Plating	
Insulator	UL94V-0 Black
Connector Contacts	Brass Gold Plated
Connector Body	Brass Nickel Plated
Connector Nut	Brass Nickel Plated

CC08R-XXS-FX-PBS

- Shielded
- Panel Mount PCB Dip
- Coding: A or B
- Front Fastened
- Socket
- No. of Contacts
- R/A
- M8

Pin Assignments Front View

B Coding					
	5P				
A Coding					
	2P	3P	4P	6P	8P



Drawing Issue 1.0