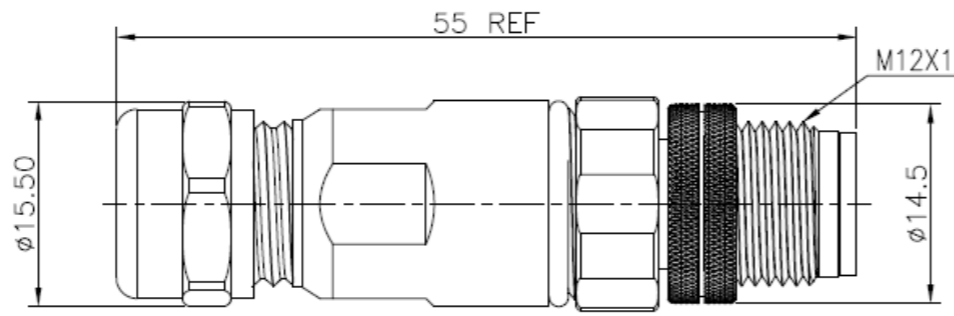
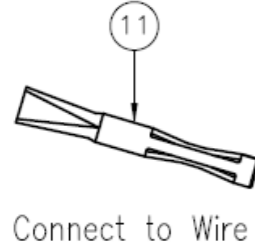
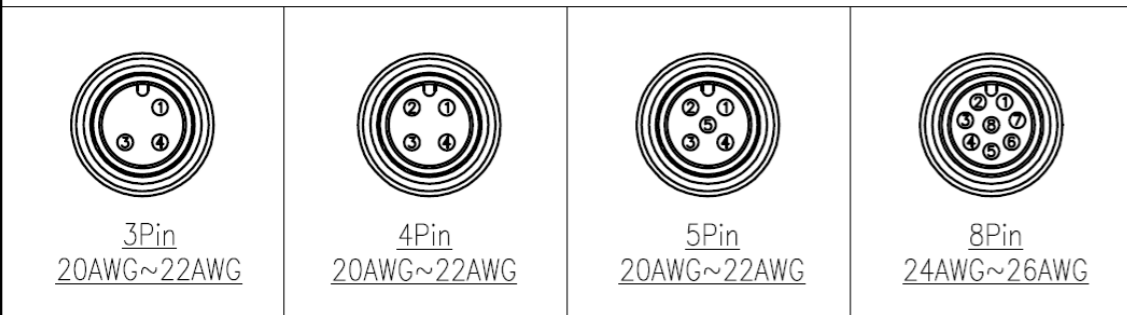


Specifications:
 Current Rating: 4A (3~5P); 2A (8P)
 Voltage Rating: 250V (3~4P); 60V (5P); 30V (8P)
 Contact Resistance: 5m ohm Max.
 Insulation Resistance: 100M ohm Min.
 Withstanding Voltage: 500V AC/Minute
 Operating Temperature Range: -40°C ~ +100°C
 Durability: 200 Cycles
 Waterproof Rate: IP67
 Seal for Cable OD: 4~6.5mm



CC12-XXP-A04-AC
 Assembly Crimp
 Coding: A
 Plug
 No. of Positions
 M12

Pin Assignments Front View



Item	Description	Material	Remark	Q'TY
1	Sealing Nut	Brass	Nickel Plated	1
2	Clamp Ring	PC	Gray	1
3	Seal	EPDM	Black	1
4	Screw Nut	Brass	Nickel Plated 60u"	1
5	O-Ring	EPDM	Black	1
6	O-Ring	EPDM	Black	2
7	Male Pin	Brass	Gold Flash	3~8
8	Lock	Brass	Nickel Plated 60u"	1
9	Screw Nut	Brass	Nickel Plated 60u"	A/R
10	Insulator	Nylon66+GF	Black	1
11	Terminal	Phosphor copper	Selective Gold Plated 0.8u" Min Other Area Nickel Plated 50~80u"	3~8

REVISION HISTORY				
REV	DESCRIPTION	CHG REF	DATE	DESIGNER
1.0	Origin	-	22 08 2023	Owen Page

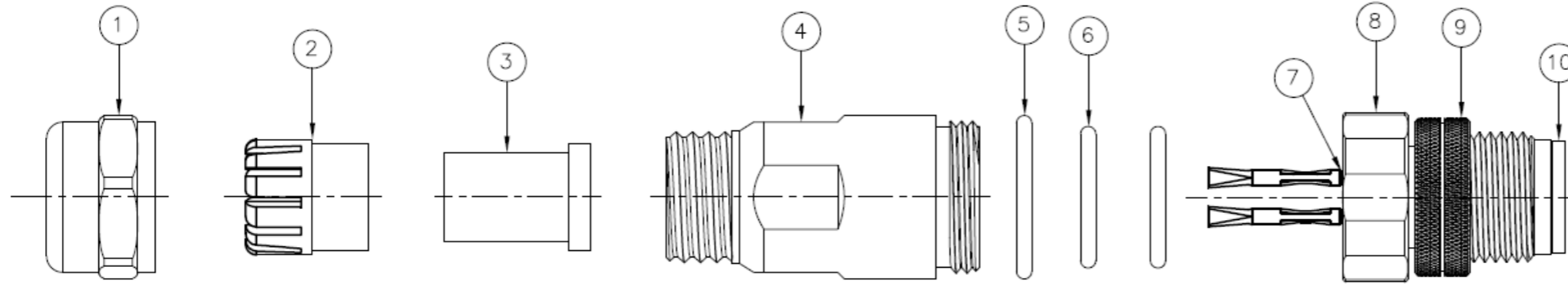
DO NOT SCALE Third Angle Projection Designed by Owen Page X.X - +0.30 Design Right Protected ©2023 Date 22 08 2023 A4

Unit of Measure: millimetres (mm)

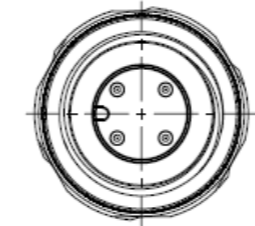
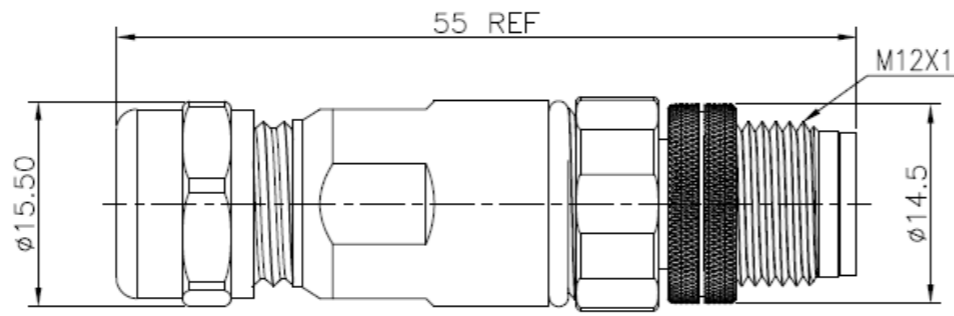
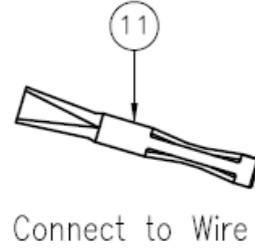
RoHS Compliant **Cambridge Electronic Industries Ltd** This document and all the data contained herein is and shall remain the property of Cambridge Electronic Industries Ltd and may not be used or copied for any purpose whatsoever without the written permission of Cambridge Electronic Industries Ltd.

Description: M12 A Code Plug Assembly Crimp Type
 Part No: CC12-XXP-A04-AC

Issue 1.0 Sheet 1 / 1



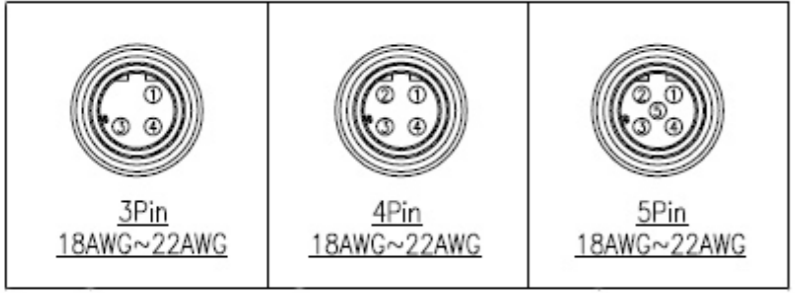
Specifications:
 Current Rating: 4A AC/DC
 Voltage Rating: 250V (3~4P): 60V (5P) AC/DC
 Contact Resistance: 5m ohm Max.
 Insulation Resistance: 100M ohm Min.
 Withstanding Voltage: 500V AC/Minute
 Operating Temperature Range: -40°C ~ +100°C
 Durability: 200 Cycles
 Waterproof Rate: IP67
 Seal for Cable OD: 4~6.5mm



CC12-XXP-D04-AC

- Assembly Crimp
- Coding: D
- Plug
- No. of Positions
- M12

Pin Assignments Front View



Item	Description	Material	Remark	Q'TY
1	Sealing Nut	Brass	Nickel Plated	1
2	Clamp Ring	PC	Gray	1
3	Seal	EPDM	Black	1
4	Screw Nut	Brass	Nickel Plated 60u"	1
5	O-Ring	EPDM	Black	1
6	O-Ring	EPDM	Black	2
7	Male Pin	Brass	Gold Flash	3~8
8	Lock	Brass	Nickel Plated 60u"	1
9	Screw Nut	Brass	Nickel Plated 60u"	A/R
10	Insulator	Nylon66+GF	Black	1
11	Terminal	Phosphor copper	Selective Gold Plated 0.8u" Min Other Area Nickel Plated 50~80u"	3~8

REVISION HISTORY				
REV	DESCRIPTION	CHG REF	DATE	DESIGNER
1.0	Origin	-	22 08 2023	Owen Page

DO NOT SCALE Unit of Measure: millimetres (mm)	Third Angle Projection	Designed by Owen Page	X.X - +0.30	©2023	Date 22 08 2023	A4
			X.XX - +0.20			
RoHS Compliant	Cambridge Electronic Industries Ltd	This document and all the data contained herein is and shall remain the property of Cambridge Electronic Industries Ltd and may not be used or copied for any purpose whatsoever without the written permission of Cambridge Electronic Industries Ltd.	Description: M12 D Code Plug Assembly Crimp Type			
			Part No: CC12-XXP-D04-AC		Issue 1.0	Sheet 1 / 1