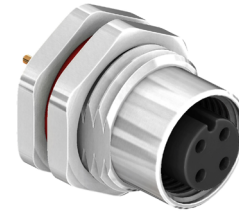


General Description

The CC12-XXS-FA07-PBX is an M12 circular connector which is available with 2 to 12 pin options in an A coding and either a PG9 or M16 lock thread nut. The connector features straight pins to the rear for mounting directly to a PCB. These connectors can be used in harsh environments and have a IP67 waterproof rating. The M12 size lends itself as a solution for power or signal solutions for industrial or transportation applications.



Specification	
Coding	A
Contact	2 to 12 Pins
Current Rating	4A AC/DC (2 to 5 Pins) 2A AC/DC (6 to 8 Pins) 1.5A AC/DC (9 to 12 Pins)
Voltage Rating	250V AC/DC (2 to 4 Pins) 60V AC/DC (5 Pins) 30V AC/DC (6 to 12 Pins)
Contact Resistance	≤5mΩ
Insulation Resistance	≥100MΩ
Withstanding Voltage	500V AC/Minute
Operating Temperature	-40°C to +100°C
Waterproof Rating	IP67
Material Plating	
Insulator	UL94V-0 Black
Connector Contacts	Brass Gold Plated
Shell	Zinc Alloy Nickel Plated

CC12-XXS-FA07-PBX

- Panel Lock Thread
- Panel Mount PCB Dip
- Die Casting
- Front Fastened A Coding
- Socket
- No. of Positions
- M12

Pin Assignments Front View

