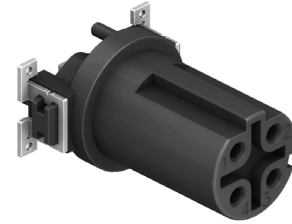


General Description

The CC12-XXS-X-SMXX-TR is an M12 receptacle which is available in both A and D coding. The receptacle is a surface mounted connector which features polarising pins to ensure correct deployment. The connector is available in 3 to 5 pin options and comes in tape and reel packaging for use in machine placement. The contacts can be ordered with either a 1µ" or 30µ" gold plating option.




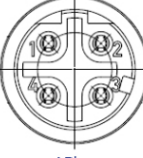


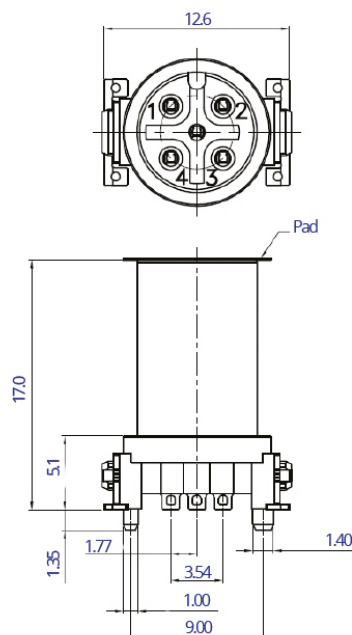
Specification	
Coding	A or D
Contact	2 to 5 Pins
Current Rating	4A AC/DC
Voltage Rating	250V AC/DC
Contact Resistance	≤10mΩ
Insulation Resistance	≥100MΩ
Withstanding Voltage	500V AC/Minute
Operating Temperature	-40°C to +85°C
Material Plating	
Insulator	LCP UL94V-0 Black
Connector Contacts	Phosphor Bronze, Gold Plated
Solder Tails	Nickel, Matte Tin Plated
Metal Tab	Brass, Nickel, Matte Tin Plated

CC12-XXS-X-SM30-TR

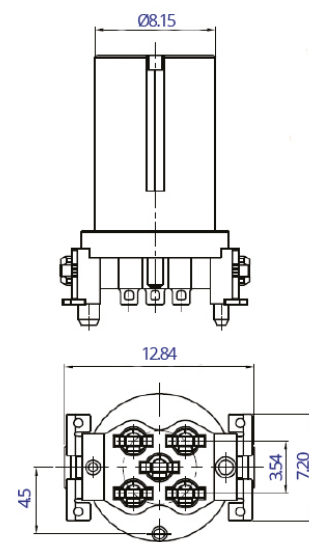
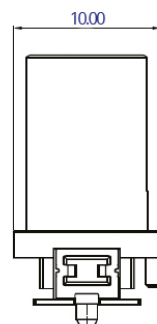
- Tape & Reel
- Blank: Gold Plated 1µ"
- 30: Gold Plated 30µ"
- Coding: A or D
- Socket
- No. of Contacts
- M12

Pin Assignments Front View

A Coding			
	3 Pins	4 Pins	5 Pins
D Coding			
		4 Pins	



See Full Drawing for Manufacturing Tolerances



Drawing Issue 1.0