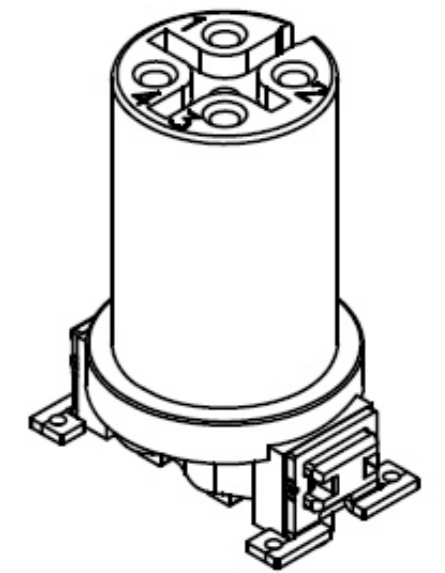
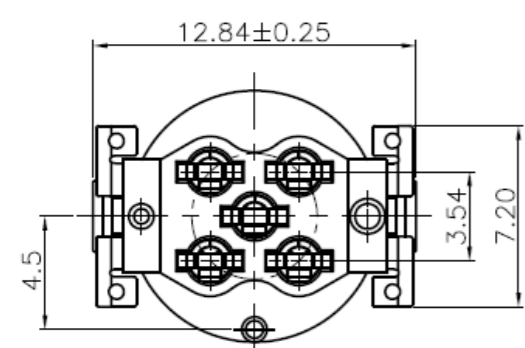


Specifications:
Current Rating: 4A AC/DC
Voltage Rating: 250V AC/DC
Contact Resistance: 10m ohm Max.
Insulation Resistance: 100M ohm Min.
Withstanding Voltage: 500V AC/Minute
Operating Temperature Range: -40°C ~ +85°C
Durability: 200 Cycles

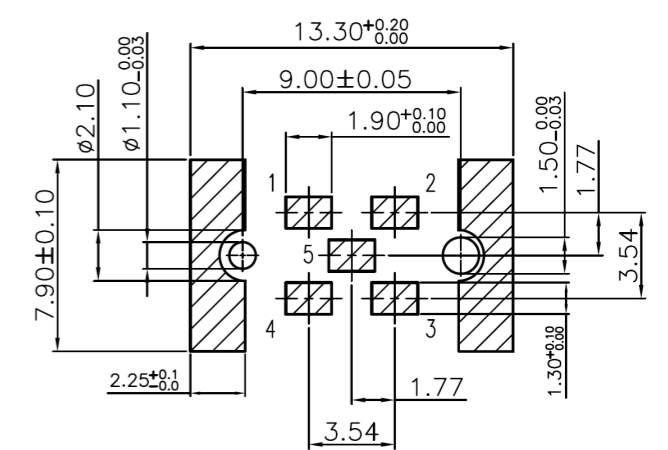
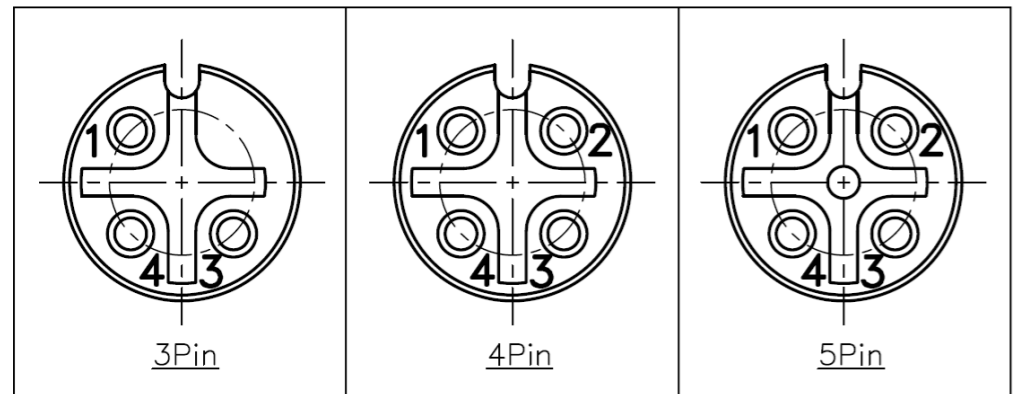
Materials and Finish
Insulator: High Temp Plastic (LCP UL94V-0) Black
Contact: Phosphor Bronze
Contact Plating: Selective Gold Plated in Contact Area, Matte Tin plated in solder tails all over nickel
Metal Tab: Copper Alloy
Plating: Matte tin plated all over nickel



CC12-XXS-A-SM30-TR
Tape & Reel
Blank: Gold Plated 1μ"
30: Gold Plated 30μ"
Coding: A
Socket
No. of Contacts
M12



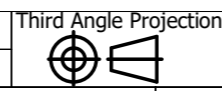
Pin Assignments Front View



Recommended P.C.B Layout

REVISION HISTORY				
REV	DESCRIPTION	CHG REF	DATE	DESIGNER
1.0	Origin	-	22 08 2023	Owen Page

DO NOT SCALE
Unit of Measure: millimetres (mm)



Designed by
Owen Page

X.X - +0.20
X.XX - +0.15
X.XXX - +0.10

Design Right
Protected

©2023

Date
22 08 2023

A4

RoHS
Compliant

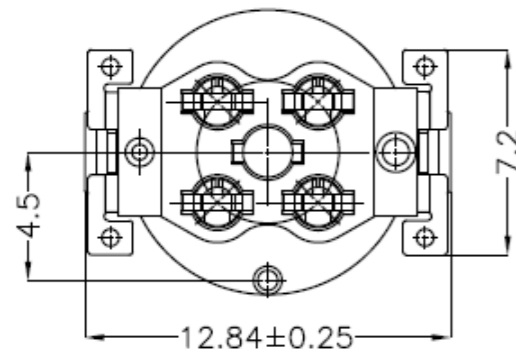
Cambridge
Electronic
Industries Ltd

This document and all the data contained herein is and shall remain the property of Cambridge Electronic Industries Ltd and may not be used or copied for any purpose whatsoever without the written permission of Cambridge Electronic Industries Ltd.

Description:
Receptacle M12 A Code 17mm SMD Type
Part No:
CC12-XXS-A-SMXX-TR

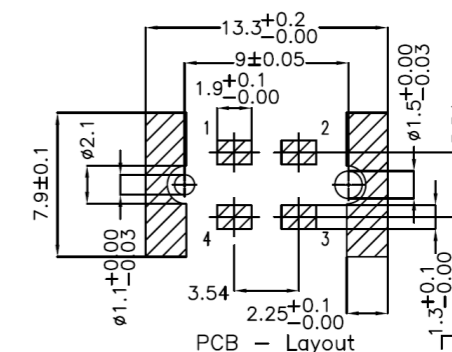
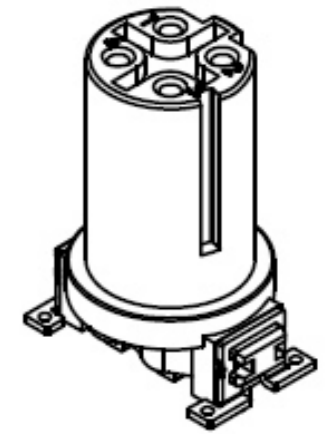
Issue
1.0


Sheet
1 / 2



CC12-XXS-D-SM30-TR

- CC: Tape & Reel
- 12: Blank: Gold Plated 1 μ
- XXS: 30: Gold Plated 30 μ
- D: Coding: D
- SM: Socket
- 30: No. of Contacts
- TR: M12



	Cambridge Electronic Industries Ltd	This document and all the data contained herein is and shall remain the property of Cambridge Electronic Industries Ltd and may not be used or copied for any purpose whatsoever without the written permission of Cambridge Electronic Industries Ltd.	Description: Federleiste M12 D Code 4polig17mm Type SMD		
			Part No: CC12-04S-D-SM30-TR	Issue 1.0	Sheet 2 / 2