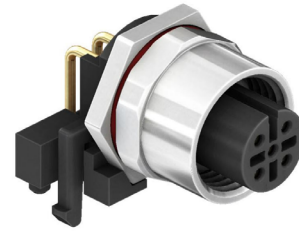






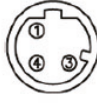


### General Description

The CC12-XXS-FX-PB is a right angle M12 circular socket designed for mounting directly onto a PCB. It is available in an A or D coding with 3, 4, 5 and 8 pins. The connector has integrated PCB support points for holding into the board for precise location prior to soldering. The connectors have a front fastening nut for mounting onto an equipment panel of between 2 and 3mm in thickness.

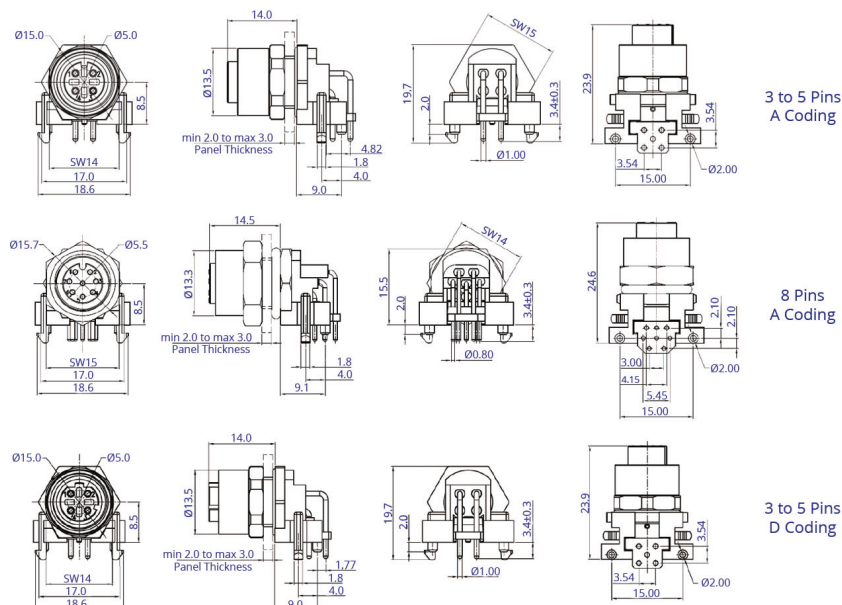
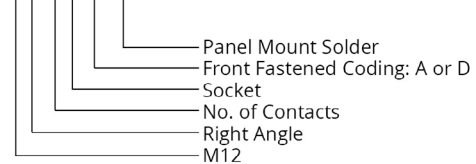


Specification	
Coding	A and D
Contact	3, 4, 5 and 8 Pins
Current Rating	4A AC/DC (3 to 5 Pins) 2A AC/DC (8 Pins)
Voltage Rating	250V AC/DC (3 to 4 Pins) 60V AC/DC (5 Pins) 30V AC/DC (8 Pins)
Contact Resistance	≤5mΩ
Insulation Resistance	≥100MΩ
Withstanding Voltage	500V AC/Minute
Operating Temperature	-25°C to +90°C
Waterproof Rating	IP67
Material Plating	
Insulator	PA66 Black
Connector Contacts	Brass Gold Plated
Seal Ring	Silicone Black
Shell	Brass Nickel Plated
Nut	Brass Nickel Plated

Pin Assignments Front View

A Coding				
	3 Pins	4 Pins	5 Pins	8 Pins
D Coding				
	3 Pins	4 Pins	5 Pins	

CC12R-XXS-FX-PB



Drawing Issue 1.0