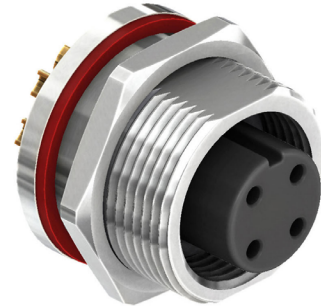


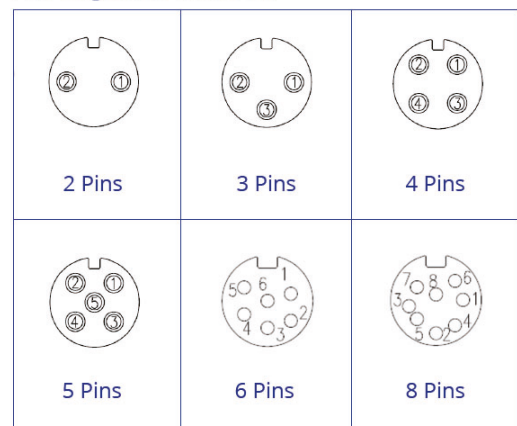
## General Description

The CC16-XXS-FA-PMX is a M16 circular socket connector which is available with 2 to 8 pin options in an A coding. The connector is front fastening panel mounted and features solder buckets to the rear for mounting on cable. The connector can be purchased as a single connector or as part as a standard cable assembly (part number SCA16-XXSFAX-XXXX) or a bespoke cable assembly with different termination options.



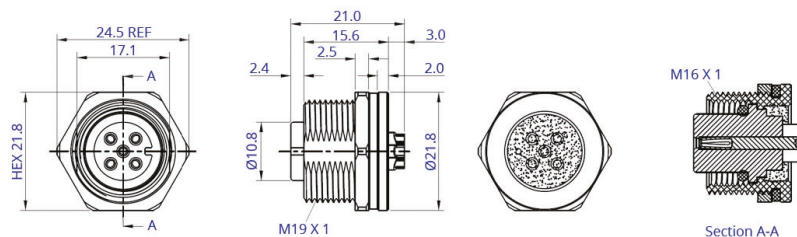
Specification	
Coding	A
Contact	2, 3, 4, 5, 6 and 8 Pins
Current Rating	10A AC/DC (2 to 5 Pins) 5A AC/DC (6 to 8 Pins)
Voltage Rating	60V AC/DC
Contact Resistance	≤5mΩ
Insulation Resistance	≥100MΩ
Withstanding Voltage	500V AC/Minute
Operating Temperature	-40°C to +100°C
Waterproof Rating	IP67
Material Plating	
Insulator	Nylon UL94V-0 Black
Connector Contacts	Brass Gold Plated
Shell	Brass Nickel Plated
Seal Ring	Red Silicone
Nut	Brass Nickel Plated

Pin Assignment Front View

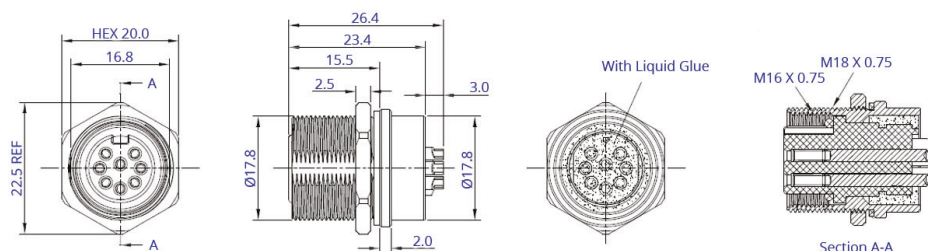


CC16-XXS-FA-PMX XX

- Blank 3u" Gold Plated
- 15: 15u" Gold Plated (6 and 8 pins only)
- 3: M19 (2 to 5 Pins)
- 9: M18 (6 and 8 Pins)
- Panel Mount PCB Dip
- A Coding
- Plug
- No. of Contacts
- M16



CC16-XXS-FA-PM3 (2 to 5 Pins)



CC16-XXS-FA-PM9 (6 and 8 Pins)

Drawing Issue 1.0