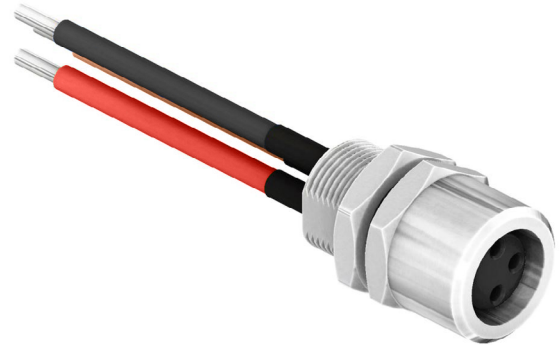


General Description

The SCA08-XXSRX-XXXX is an M8 rear fastening panel mounted socket cable assembly with a stub end for completion with a termination of your choice. The M8 socket is available in an A or B coding with 2 to 8 pin options. The cable is available in a standard length of 50 or 300mm, but we can offer a bespoke cable assembly to any length and with any termination.

Specification	
Coding	A or B
Contact	2 to 8 Pins
Current Rating	3A AC/DC (2 to 5 Pins) 1.5A AC/DC (6 to 8 Pins)
Voltage Rating	60V AC/DC (2 to 3 Pins) 30V AC/DC (4 to 8 Pins)
Contact Resistance	≤5mΩ
Insulation Resistance	Cable ≥10MΩ Connector ≥100MΩ
Withstanding Voltage	500V AC/Minute (2 to 5 Pins) 250V AC/Minute (6 to 8 Pins)
Operating Temperature	-40 to +100°C
Waterproof Rate	IP67
Connector Part Number	CC08-XXS-RX-PM
Cable	UL1007 XXAWG



SCA08-XXSRX-XXXX

Cable Length

0050: 50mm

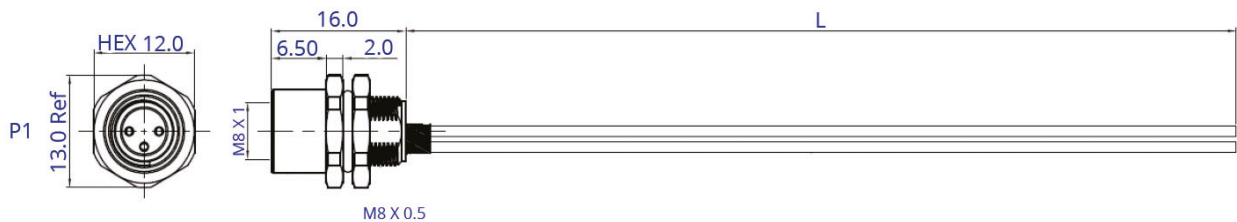
0300: 300mm

Coding: A or B

Rear Fastened

Socket

No. of Contacts



Pin Assignments Front View

A Coding	2 Pins	3 Pins	4 Pins	6 Pins	8 Pins	B Coding	5 Pins
Pin Outs	1. Black 3. Brown	1. Black 3. Brown 4. Red	1. Black 2. White 3. Brown 4. Red	1. Black 2. White 3. Brown 4. Red 5. Yellow 6. Blue	1. Black 2. White 3. Brown 4. Red 5. Yellow 6. Blue 7. Orange 8. Green		1. Black 2. White 3. Brown 4. Red 5. Yellow

Drawing Issue 1.0