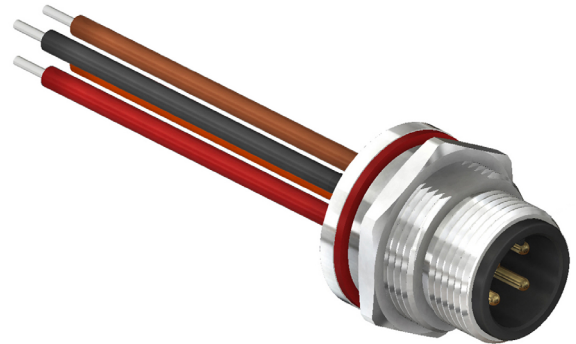


General Description

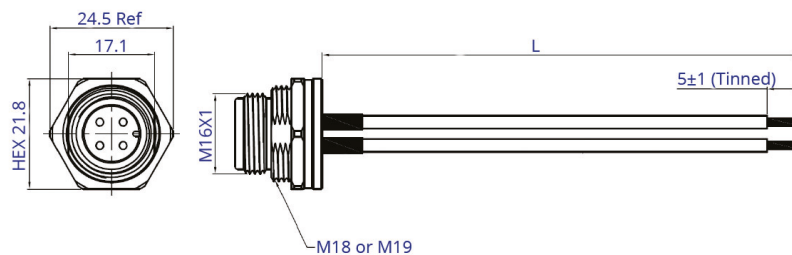
The SCA16-XXPFAX-XXXX is an M16 Plug cable assembly which comes with a stub end as standard. The front fastening connector is available in an A coding and with 2 to 14 pin options. The connector is supplied with either an M18 or M19 nut. The assembly can be supplied to your required length or can be made into a bespoke assembly with terminations of your choice to the other end.



Specification	
Coding	A
Contact	2, 3, 4, 5, 6, 8, 12 and 14 Pins
Current Rating	10A AC/DC (2 to 5 Pins) 5A AC/DC (6 to 8 Pins) 3A AC/DC (12 to 14 Pins)
Voltage Rating	60V AC/DC
Contact Resistance	≤5mΩ
Insulation Resistance	Cable ≥10MΩ Connector ≥100MΩ
Operating Temperature	-40°C to +100°C
Waterproof Rate	IP67
Connector Part Number	CC16-XXP-FA-PMX
Cable	UL1007 XXAWG

SCA16-XXPFAX-XXXX

Cable Length
 M18 or M19
 A Coding
 Front Fastened
 Plug
 No. of Contacts



Pin Assignments Front View

A Coding	2 Pins	3 Pins	4 Pins	5 Pins	6 Pins	8 Pins	12 Pins	14 Pins
Pin Outs	1. Black 2. Brown	1. Black 2. Brown 3. Red	1. Black 2. Brown 3. Red 4. Orange	1. Black 2. Brown 3. Red 4. Orange 5. Yellow	1. Black 2. Brown 3. Red 4. Orange 5. Yellow 6. Green	1. Black 2. Brown 3. Red 4. Orange 5. Yellow 6. Green 7. Blue 8. Purple	1. Black 2. Brown 3. Red 4. Orange 5. Yellow 6. Green 7. Blue 8. Purple 9. Grey 10. White 11. Black/White 12. Brown/White	1. Black 2. Brown 3. Red 4. Orange 5. Yellow 6. Green 7. Blue 8. Purple 9. Grey 10. White 11. Black/White 12. Brown/White 13. Red/White 14. Orange/White

Drawing Issue 1.0