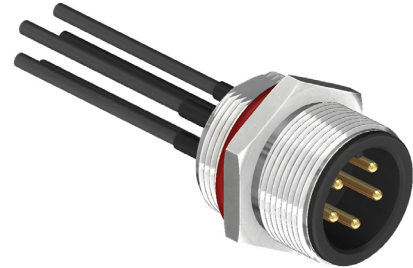


General Description

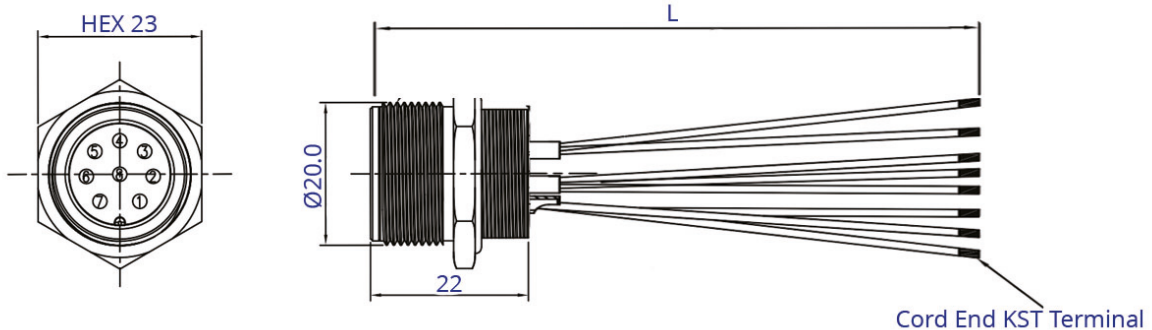
The SCA20-XXPRA-XXXX is an M20 plug cable assembly which comes as standard with a stub end. The connector is available in an A coding and with 5 or 8 pin options with a rear panel fastening. Standard lengths are 150 and 300mm, but the assembly can be supplied to your required length or can be made into a bespoke assembly with terminations of your choice to the other end.

Specification	
Coding	A
Contact	5 and 8 Pins
Current Rating	10A
Voltage Rating	250V
Contact Resistance	$\leq 5m\Omega$
Insulation Resistance	Cable $\geq 10M\Omega$ Connector $\geq 100M\Omega$
Operating Temperature	-40°C to +105°C
Waterproof Rate	IP67
Connector Part Number	CC20-XXP-RA-PM



SCA20-XXPRA-XXXX

Cable Length
0150: 150mm
0300: 300mm
A Coding
Rear Fastened
Plug
No. of Positions



Pin Assignments Front View

A Coding	5 Pins	8 Pins
Pin Outs	1. Black No 1 2. Black No 2 3. Black No 3 4. Black No 4 5. Black No 5	1. Blue 2. Black 3. White 4. Brown 5. Green 6. Red 7. Grey 8. Purple

Drawing Issue 1.0