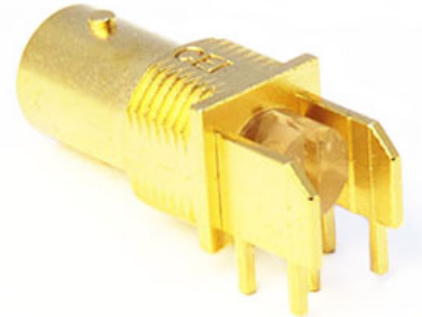


## General Description

This precision 75Ω BNC Connector is a right angle mounted PCB connector with a selection of different leg lengths available. It also features Pathfinder™ light pipe technology which aids port identification. With a centre line of 4mm above the board, its low profile permits closer packing densities of daughter boards, which allows reduction in the bulk of routing and switching equipment.

This connector was formerly sold as:  
C-SX-069G when supplied with ANB-H0-ABN-2.50 and AWB-S0-ZBN-0.50  
C-SX-088G as the connector part only



## Electrical

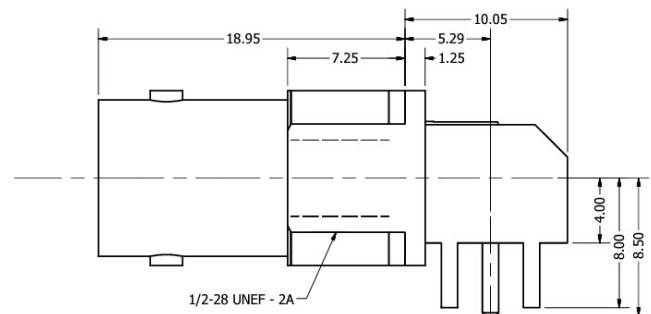
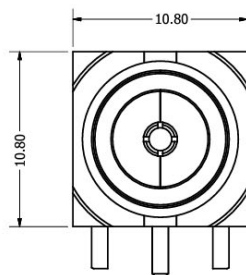
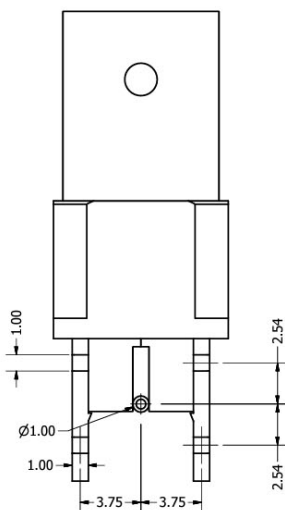
Impedance		75Ω
Frequency Range		0-3GHz
Working Voltage		500Vrms
Reflection Factor (VSWR)		1.06 (max) 0-1.5GHz 1.33 (max) 1.5-3GHz
Dielectric Withstanding Voltage		1500Vrms
Insulation Resistance		≥5000MΩ
Contact Resistance	Centre Contact	≤ 1.5mΩ
	Outer Contact	≤ 1.0mΩ

## Materials

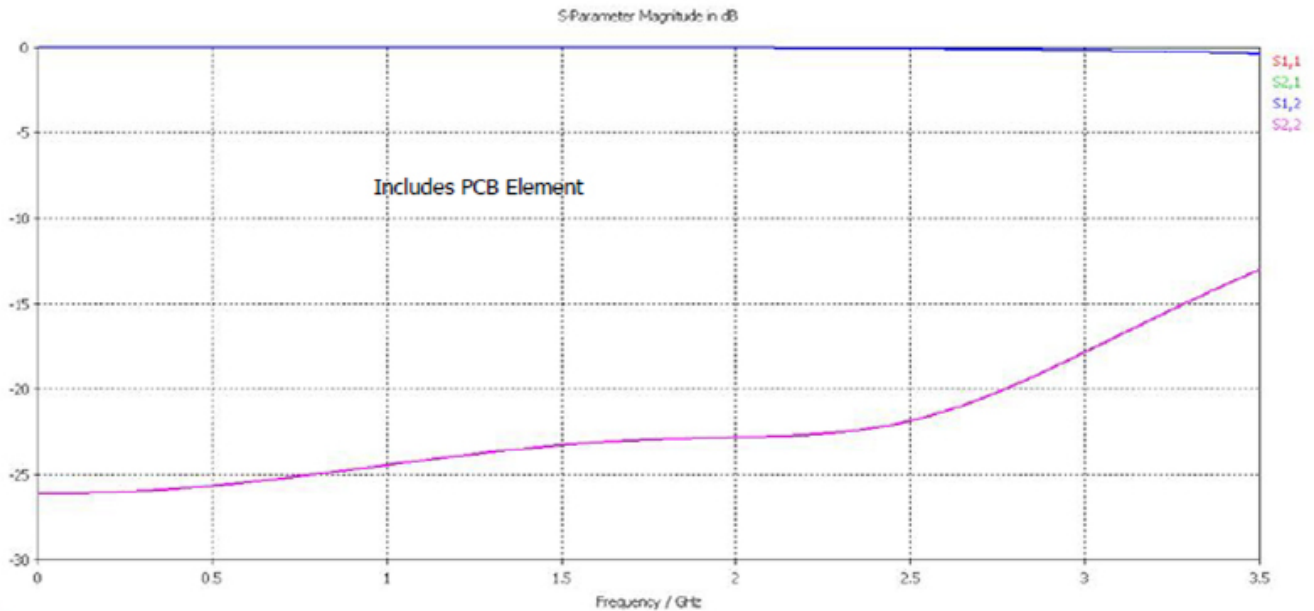
Centre Pin	PhosBronze / 10 μ"Au
Metal Parts	Die Cast Zinc/Au
Insulators	UL94 HB TPX

## Environmental

Connector Type	BNC Female
Temp Range	-65 to +85°C
Mating Cycles	250



## Return Loss Graph



## PCB Layout and Panel Cutout

