

General Description

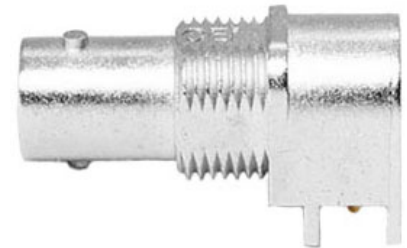
The XBS-06-RB25-NNCV is a bulkhead mounting BNC connector which can be used in PCI® Express applications. It features a Pathfinder™ light pipe which aids port identification and status. The XBS-06-RB25-NNCV has a centre line of 7mm, which is taller than other connectors in this range. It also has a built in flange which provides additional EMI shielding and is optimised for 6G HD-SDI environments.

This connector was formerly sold as:
C-SX-126 as a connector only product



Electrical

Impedance	75Ω	
Frequency Range	0-6GHz	
Working Voltage	500Vrms	
Reflection Factor (VSWR)	1.2 (max) 0-3GHz 1.5 (max) 3-6GHz	
Dielectric Withstanding Voltage	1500Vrms	
Insulation Resistance	≥5000MΩ	
Contact Resistance	Centre Contact	≤ 1.5mΩ
	Outer Contact	≤ 1.0mΩ

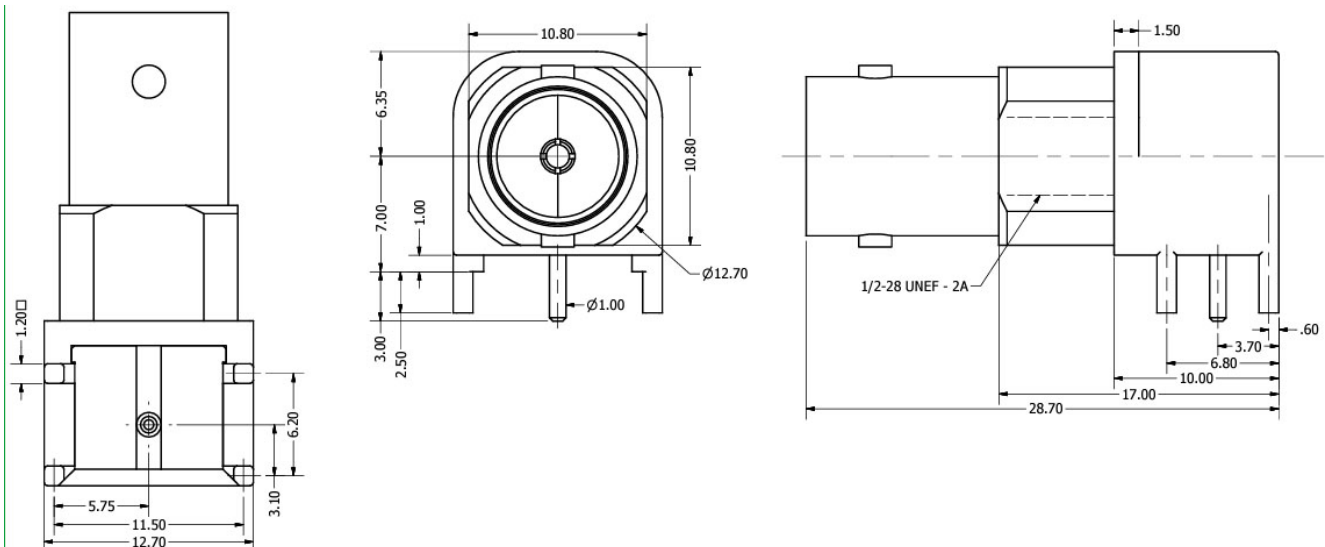


Materials

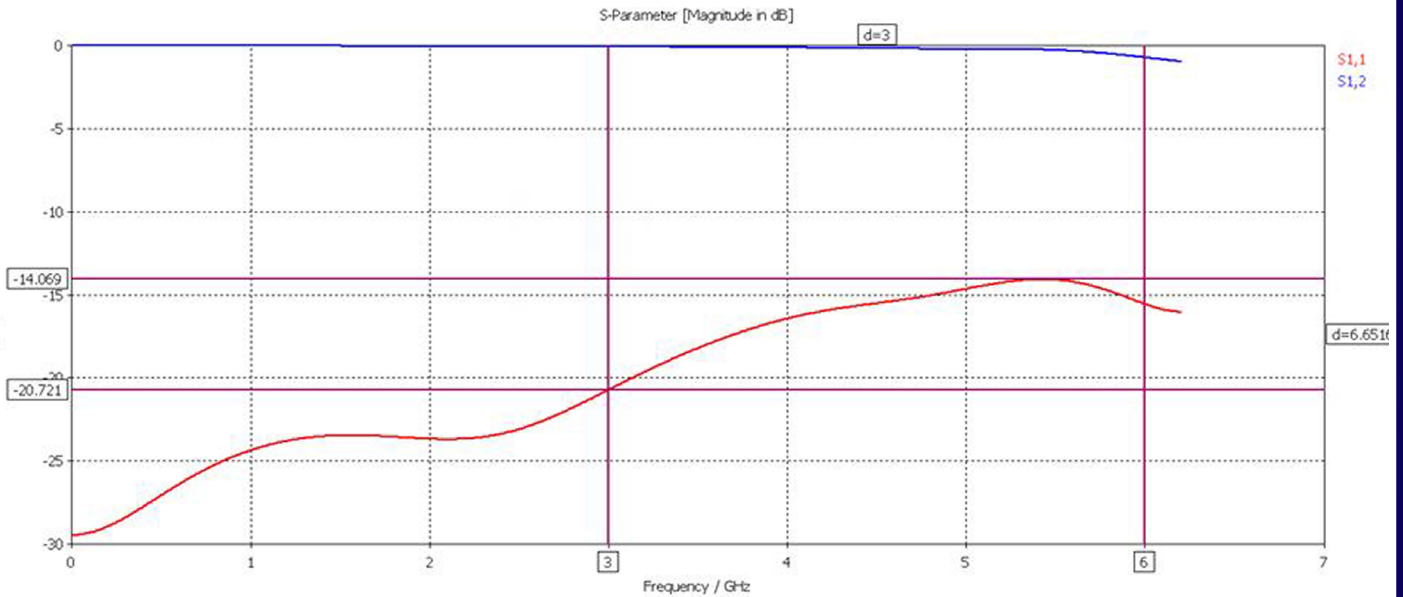
Centre Pin	PhosBronze / 10 μ"Au
Metal Parts	Die Cast Zinc/Ni
Insulators	UL94 HB TPX

Environmental

Connector Type	BNC Female
Temp Range	-65 to +85°C
Mating Cycles	250



Return Loss Graph



PCB Layout and Panel Cutout

