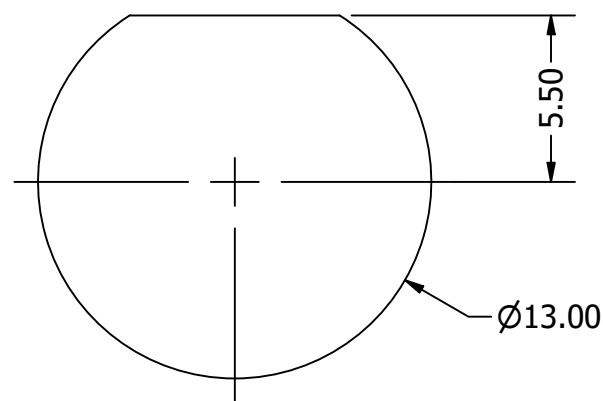
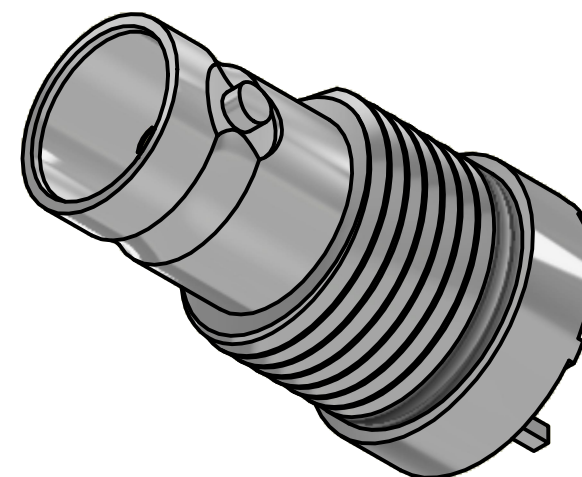


Recommended PCB Footprint

SMT Pads can be included for extra mechanical support



Recommended Panel Cut Out



REVISION HISTORY			
REV	DESCRIPTION	DATE	DESIGNER
3.0	Updated P/N	31 Oct 2024	Peter Millard

Design Right Protected	Material:		Finish:		Gen Tol ±0.10 Angular ±2°	DO NOT SCALE	
	Designed by P. Fayers		Checked by		Approved by	©2024	Unit of Measure: millimeters (mm)
RoHS Compliant	Description: 6GHz 75 ohm BNC Female Bulkhead Top Entry with 2 Legs		Part No: XBS-06-TB35-NN Cust		Issue 3.0		Sheet 1 / 2
	This document and all the data contained herein is and shall remain the property of Cambridge Electronic Industries Ltd and may not be used or copied for any purpose whatsoever without the written permission of Cambridge Electronic Industries Ltd.		Date 15 Dec 2009		A3		

A

B

B

A

B

本



A