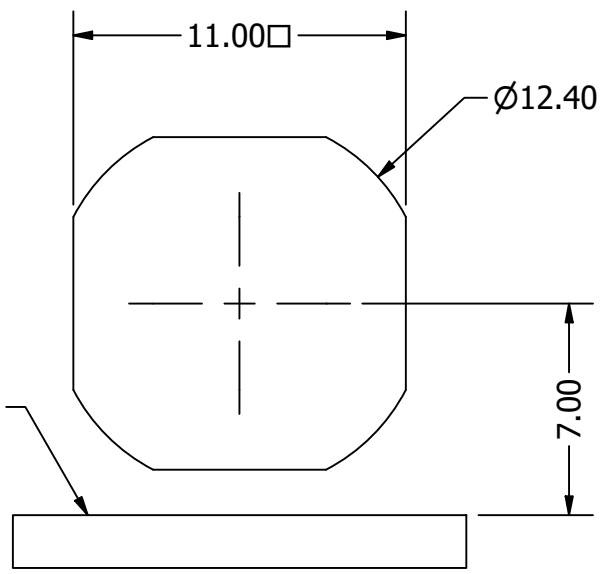
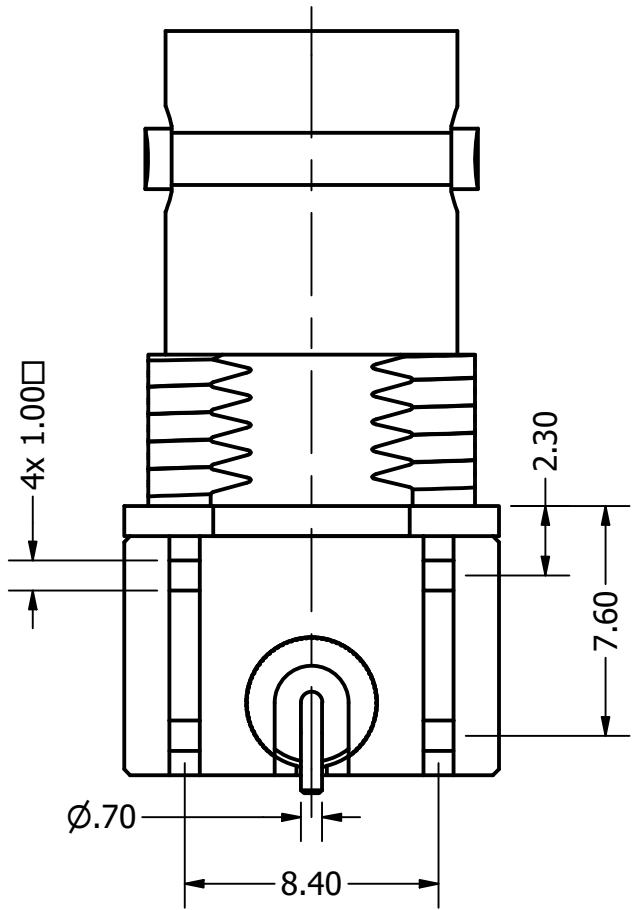
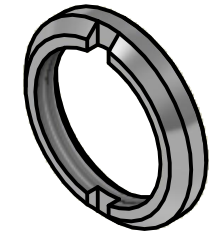


Can be stacked with
XBS-12-RB21-NNJRX
for multi-connector placements

Recommended Panel Cut Out



Only for use with Circular BNC Nuts:
ANB-C2-ABN-2.50
ANB-C2-ANO-4.00
ANB-C4-ASN-2.50
ANB-C2-ABN-3.50



REVISION HISTORY				
REV	DESCRIPTION	CHG REF	DATE	DESIGNER
1.0	Origin		07 Aug 2024	Peter Millard
1.1	Updated TOL	FB / SUPP	27 Aug 2024	Peter Millard
1.2	Added clarification to components	FB / SUPP	13 Jan 2025	Peter Millard
1.3	Interface change to aid assembly	FB / SUPP	18 Mar 2025	Peter Millard
1.4	Adjusted radi & Tol	FB / SUPP	01 Apr 2025	Peter Millard
1.5	Adjusted Thru hole	FB / SUPP	03 Apr 2025	Peter Millard
1.6	Reverted hole position	FB / SUPP	18 Aug 2025	Peter Millard

Design Right Protected Third Angle Projection	Material:		Finish:		Gen Tol ±0.10 Angular ±2°		DO NOT SCALE	
	Designed by PeterM		Checked by		Approved by		©2024 Date 13 Dec 2023	
RoHS Compliant	CAMBRIDGE ELECTRONIC INDUSTRIES		Description: 12GHz Short adjoining female BNC with S surface mounting pin		Part No: XBS-12-RB21-NNRX Cust		Issue 1.6	
	This document and all the data contained herein is and shall remain the property of Cambridge Electronic Industries Ltd and may not be used or copied for any purpose whatsoever without the written permission of Cambridge Electronic Industries Ltd.						Sheet 1 / 2	

