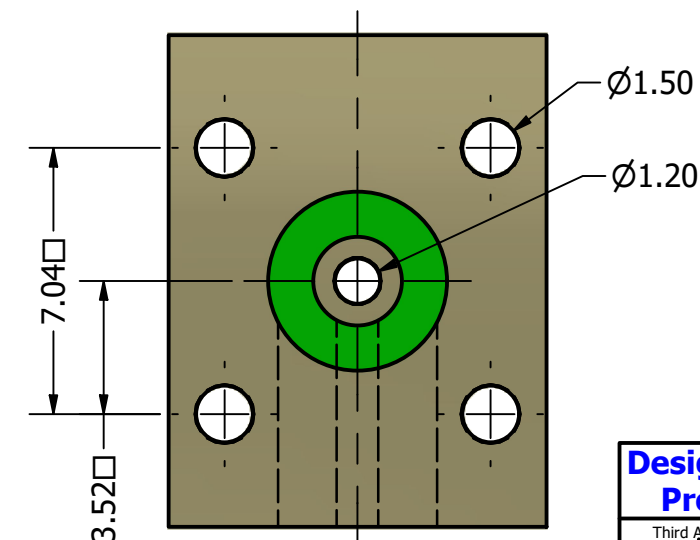
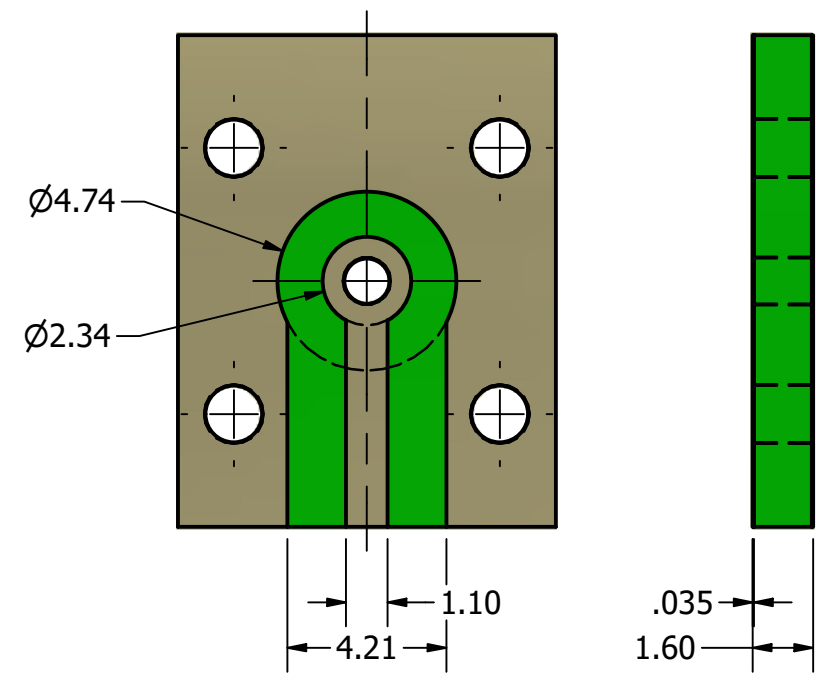




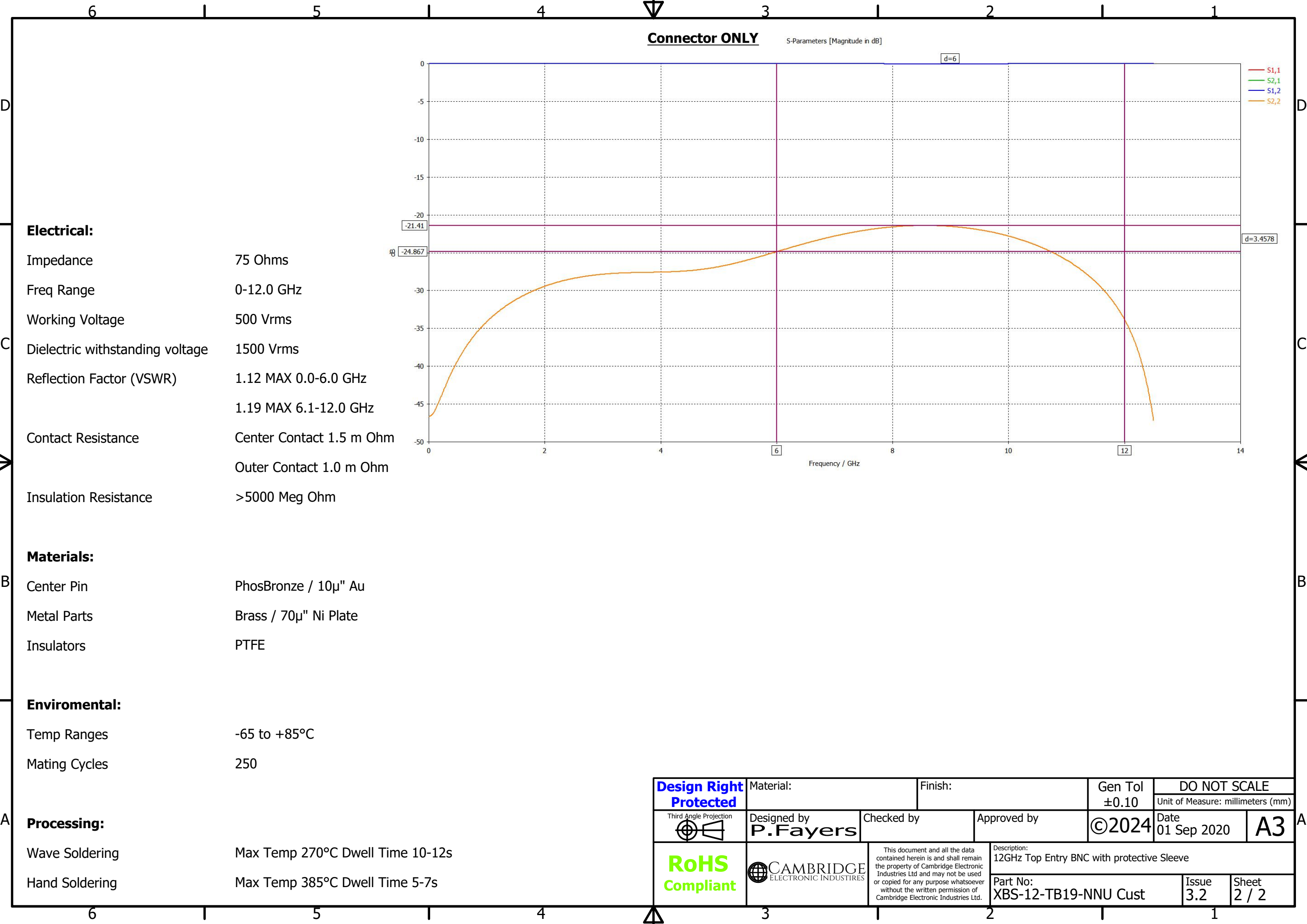
**Suggested PCB layout intended as starting point for design iteration**

**Recommended Panel Cut Out**  
Max Thickness 2mm



REVISION HISTORY				
REV	DESCRIPTION	CHG REF	DATE	DESIGNER
3.0	Updated P/N	FB / INT	21 Feb 2024	Peter Millard
3.1	Updated Dimension layout	FB / INT	25 Nov 2024	Peter Millard
3.2	Updated PCB and data block	FB/ SUPP	28 Nov 2024	Peter Millard

<b>Design Right Protected</b>  Third Angle Projection 	Material:		Finish:		Gen Tol ±0.10	DO NOT SCALE		
	Designed by <b>P.Fayers</b>		Checked by		Approved by	©2024	Date 01 Sep 2020	<b>A3</b>
	 CAMBRIDGE ELECTRONIC INDUSTRIES		This document and all the data contained herein is and shall remain the property of Cambridge Electronic Industries Ltd and may not be used or copied for any purpose whatsoever without the written permission of Cambridge Electronic Industries Ltd.		Description: 12GHz Top Entry BNC with protective Sleeve			
<b>RoHS Compliant</b>					Part No: <b>XBS-12-TB19-NNU Cust</b>		Issue <b>3.2</b>	Sheet <b>1 / 2</b>



**Electrical:**

Impedance 75 Ohms

Freq Range 0-12.0 GHz

Working Voltage 500 Vrms

Dielectric withstanding voltage 1500 Vrms

Reflection Factor (VSWR) 1.12 MAX 0.0-6.0 GHz  
1.19 MAX 6.1-12.0 GHz

Contact Resistance Center Contact 1.5 m Ohm  
Outer Contact 1.0 m Ohm

Insulation Resistance >5000 Meg Ohm

**Materials:**

Center Pin PhosBronze / 10μ" Au

Metal Parts Brass / 70μ" Ni Plate

Insulators PTFE

**Enviromental:**

Temp Ranges -65 to +85°C

Mating Cycles 250

**Processing:**

Wave Soldering Max Temp 270°C Dwell Time 10-12s

Hand Soldering Max Temp 385°C Dwell Time 5-7s

**Design Right Protected**

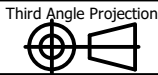
Material:

Finish:

Gen Tol  
±0.10

DO NOT SCALE

Unit of Measure: millimeters (mm)



Designed by  
**P.Fayers**

Checked by

Approved by

©2024

Date  
01 Sep 2020

**A3**

**RoHS Compliant**



This document and all the data contained herein is and shall remain the property of Cambridge Electronic Industries Ltd and may not be used or copied for any purpose whatsoever without the written permission of Cambridge Electronic Industries Ltd.

Description:  
12GHz Top Entry BNC with protective Sleeve

Part No:  
XBS-12-TB19-NNU Cust

Issue  
3.2

Sheet  
2 / 2