

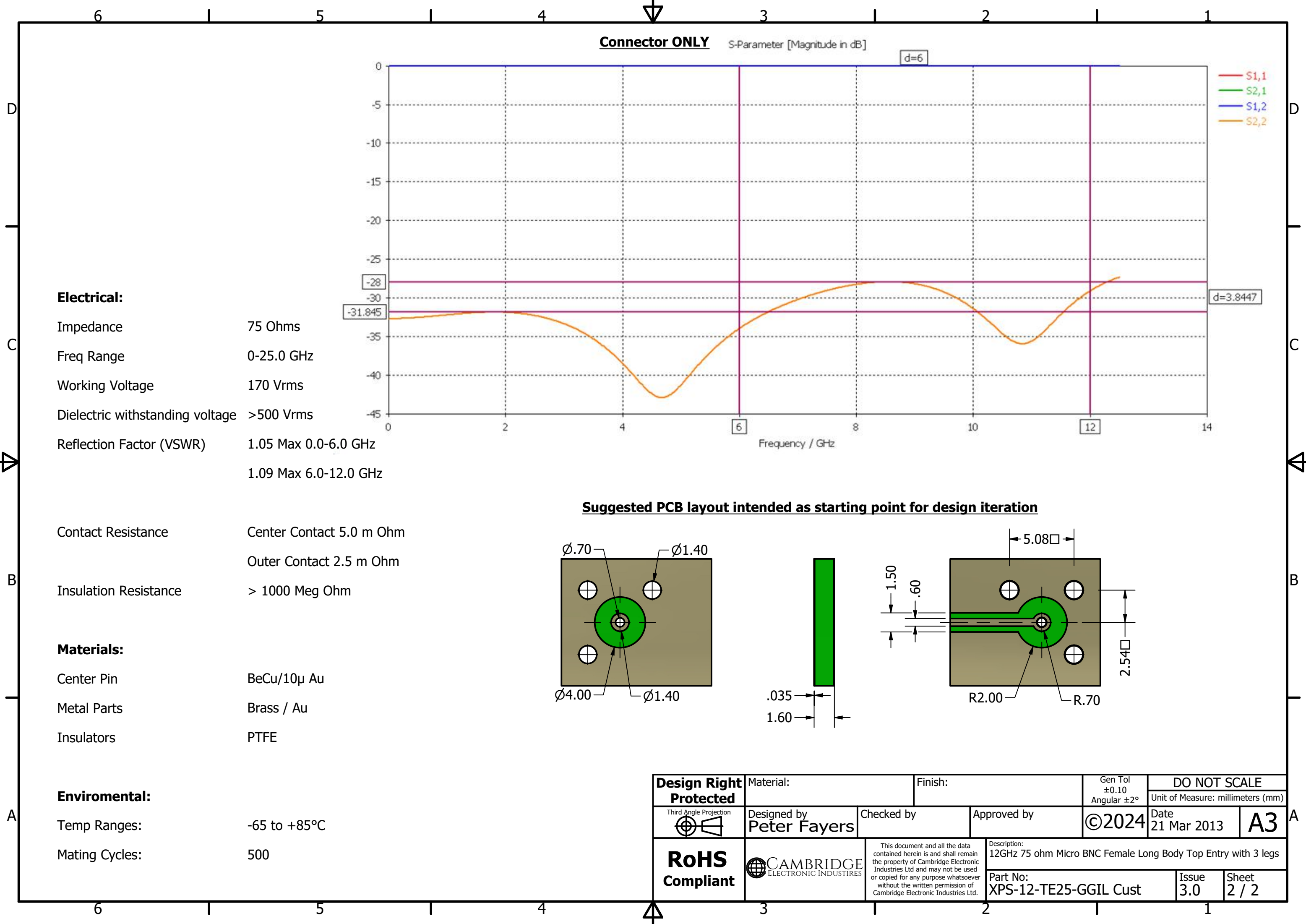


Recommended PCB Footprint

REVISION HISTORY			
REV	DESCRIPTION	DATE	DESIGNER
3.0	Updated P/N	31 Jul 2024	Peter Millard

Design Right Protected	Material:		Finish:		Gen Tol ±0.10 Angular ±2°	DO NOT SCALE	
						Unit of Measure: millimeters (mm)	
Third Angle Projection 	Designed by Peter Fayers	Checked by		Approved by	©2024	Date 21 Mar 2013	A3
RoHS Compliant	 CAMBRIDGE ELECTRONIC INDUSTRIES	This document and all the data contained herein is and shall remain the property of Cambridge Electronic Industries Ltd and may not be used or copied for any purpose whatsoever without the written permission of Cambridge Electronic Industries Ltd.			Description: 12GHz 75 ohm Micro BNC Female Long Body Top Entry with 3 legs		
					Part No: XPS-12-TE25-GGIL Cust		Issue 3.0



Electrical:

Impedance	75 Ohms
Freq Range	0-25.0 GHz
Working Voltage	170 Vrms
Dielectric withstanding voltage	>500 Vrms
Reflection Factor (VSWR)	1.05 Max 0.0-6.0 GHz 1.09 Max 6.0-12.0 GHz

Materials:

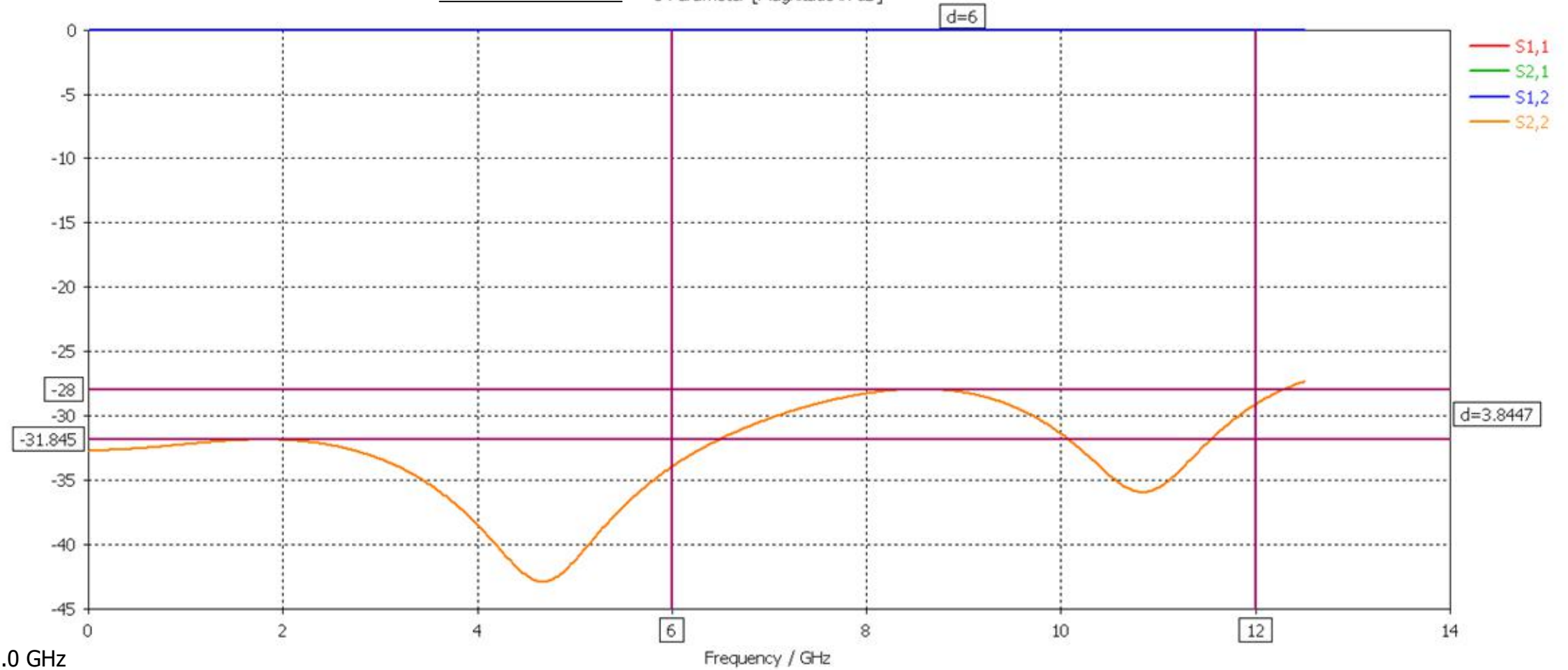
Center Pin	BeCu/10μ Au
Metal Parts	Brass / Au
Insulators	PTFE

Enviromental:

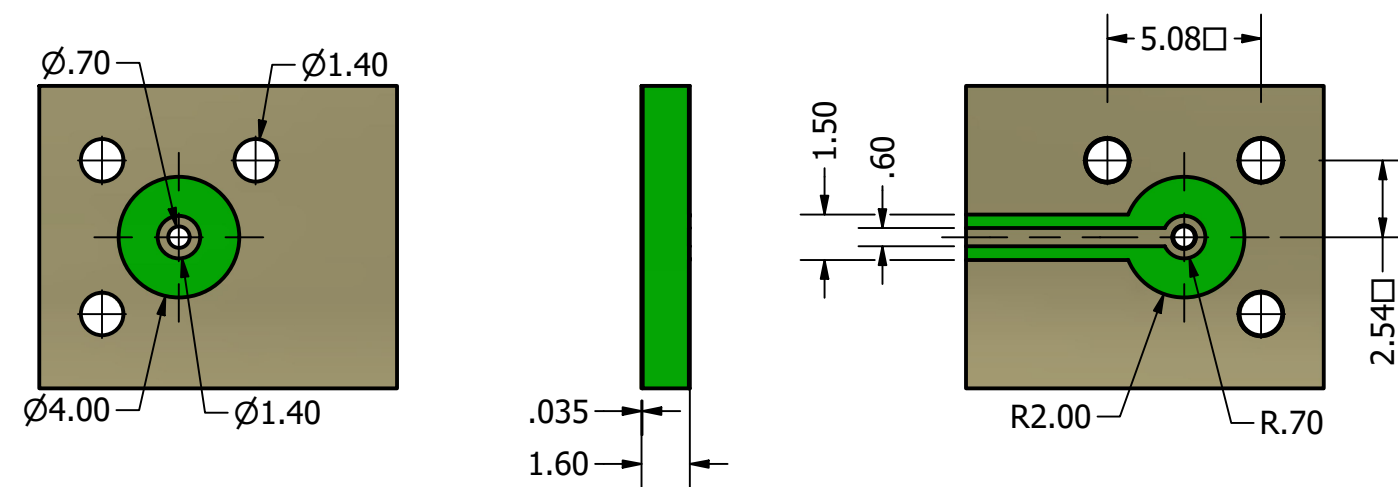
Temp Ranges:	-65 to +85°C
Mating Cycles:	500

Connector ONLY

S-Parameter [Magnitude in dB]



Suggested PCB layout intended as starting point for design iteration



Design Right Protected	Material:		Finish:		Gen Tol ±0.10 Angular ±2°		DO NOT SCALE	
	Designed by Peter Fayers		Checked by		Approved by		Unit of Measure: millimeters (mm)	
Third Angle Projection	Description: 12GHz 75 ohm Micro BNC Female Long Body Top Entry with 3 legs		Part No: XPS-12-TE25-GGIL Cust		Issue 3.0		Date 21 Mar 2013	
RoHS Compliant	CAMBRIDGE ELECTRONIC INDUSTRIES		This document and all the data contained herein is and shall remain the property of Cambridge Electronic Industries Ltd and may not be used or copied for any purpose whatsoever without the written permission of Cambridge Electronic Industries Ltd.		Sheet 2 / 2		A3	